

New Bern

Bank of the Arts, Craven Arts Council, 317 Middle Street, New Bern. **July 13 - 31** - "Installation Art by Jane Horner". Hours: Mon.-Fri., 10am-4pm. Contact: 252/638-2577 or at (www.cravenarts.org).

North Wilkesboro - Wilkesboro

Wilkes Art Gallery, 913 C Street, old Post Office, North Wilkesboro. **Through Aug. 11** - "From Past to Present: A Retrospective Exhibit by Cher Shaffer". Shaffer, a self-taught artist, produces work that is influenced both by her heritage, life experience and interactions with family members and friends. Having spent 30 years as a working artist, Shaffer has had nine, one-woman shows and has been showcased in several galleries and museums throughout the United States.. Hours: Tue.-Fri., 10am-5pm & Sat., 10am-2pm. Contact: 336/667-2841 or at (www.wilkesartgallery.org).

Penland

Penland Gallery, first building on right as you enter the campus, Penland School of Crafts, Penland Road, Penland. **Through July 8** - "Studio Practice," featuring works by twelve artists - their work, their working environment, and their sources of inspiration. **July 24 - Sept. 16** - "Forecast," featuring an exhibit of works from a new wave of creative talent. A reception will be held on July 27, from 7-8:30pm. **Ongoing** - Featuring works by Penland Instructors and affiliated artists. Hours: Tue.-Sat., 10am-5pm & Sun., noon-5pm. Contact: call Kathryn Gremley, at 828/765-6211 or at (www.penland.org).

Pittsboro

ChathamArts Gallery, 115 Hillsboro St., Pittsboro. **Ongoing** - Featuring a wide range of original work produced by local artists. Hours: Wed.-Sat., 11am-5pm & Sun. noon-4pm. Contact: 919/542-0394 or at (www.chathamarts.org).

Raleigh

Raleigh City Plaza, Raleigh. **Through Sept. 2012** - Featuring the work of three sculptors: Adam Walls of Laurinburg, NC, designed "Balancing Act," a brightly painted steel sculpture more than 12 feet tall; Robert Coon of Vero Beach, FL, will show "My Big Red," a 15-foot sculpture of fabricated and painted aluminum; and Deborah Marucci of Venice, FL, will present "Spiral Orb," a 10-foot-tall sculpture of powder-coated steel and aluminum. Contact: Kim Curry-Evans at Raleigh Arts Commission by e-mail at (kim.curry-evans@raleighnc.gov).

CAM Raleigh, 409 W. Martin Street, between Harrington and West streets, Raleigh. **Main Gallery, Through Sept. 2** - "The Credentialist," by José Lerma is a Museum premiere of newly commissioned works. Lerma currently lives and works in New York and Chicago, where he is a faculty member at the School of the Art Institute of Chicago. Lerma creates intricate installations that combine painting and non-traditional materials such as reflective fabrics and commercial carpet, relying on a compendium of mediums, references, and elements that combine his personal history and extensive academic accolades with his awareness of social history. The Credentialist is a new body of 18 artworks commissioned for the main gallery at CAM Raleigh highlighting his ability to combine and collapse facets of history from his personal viewpoint. Central to the exhibition is the notion of rising and falling, particularly the precipitous demise of great historical figures. Hours: Mon., 11am-6:30pm; Wed.-Fri., 11am-6:30pm; Sat. & Sun., noon-5pm; and 1st & 3rd Fri., open till 9pm. Contact: 919/513-0946 or at (<http://cam-raleigh.org>).

Collective Arts Gallery & Ceramic Supply, 8801 Leadmine Road, Suite 103, Raleigh. **Ongoing** - Featuring works by local and nationally renowned artists on permanent exhibit. Hours: Tue.-Fri. 11am-7pm & Sat., 10am-6pm. Contact: 919/844-0765.

Gregg Museum of Art & Design, located in the Talley Student Center in the middle of the NCSU campus, Raleigh. **Extended Through Aug. 31** - "Barkcloth, Bras and Bulletproof Cotton: The Powers of Costume". According to the Biblical story of Genesis, the moment that Adam and Eve ate the forbidden fruit and became self-aware, the very first thing they did was make themselves something to wear. Using amazing objects from the Gregg Museum's permanent collection, this exhibition explores not only how clothing serves to protect, shelter, shield, and modify the human body, but also how what we wear helps us lure, seduce, dominate, segregate or manipulate others, discover spirituality and personal self awareness, proclaim our individuality or group membership, or express ourselves. Photographs, artifacts, jewelry, and a dazzling array of outfits ranging from military uniforms, gangster wear and tribal shaman's garb, to executive power

suits and ultra-high-fashion evening gowns, offer a fascinating foray into how clothes can do so much more than merely "make the man." **Through Aug. 31** - "In Response: Contemporary Weavings by Vita Plume and Ann Roth". The exhibition is dedicated to the museum's late Associate Director, Dr. Lynn Ennis, and features weavings by Ann Roth, Gallery Director and studio art instructor at Meredith College, and by Vita Plume, associate professor at NC State's College of Design. Both weavers were close friends of Ennis, and show new pieces that respond both to her love of textiles as well as to specific works in the Gregg Museum's permanent collection. Plume uses portrait photographs taken in the Appalachians in the early 1900s by Doris Ulmann, Bayard Wooten, Paul Buchanan and others as a source of inspiration for making ghostly images and patterns created on a digital Jacquard loom, which explore the instability of visual and cultural identity. Roth finds inspiration in quilts from the Gregg's permanent collection whose rhythmic repetition of geometric shapes, juxtapositions of fabric patterns, and often quirky color combinations have influenced her ikat, handwoven textiles. **Ongoing** - The Gregg's collecting focus reflects the mission of North Carolina State University and supports its academic programs by providing research opportunities for NCSU students and the citizens of North Carolina and beyond. The collection includes, but is not limited to, textiles, ceramics, outsider/folk art, photography, architectural drawings & modern furniture. The Gregg Museum of Art & Design also puts on six to eight exhibitions per year in its two galleries, in addition to exhibiting work at various places in the Talley Student Center and around campus. Hours: Mon.-Fri., noon-8pm and Sat.-Sun., 2-8pm. Contact: 919/515-3503 or at (www.ncsu.edu/arts).

Miriam Preston Block Gallery, Raleigh Municipal Building, lobby of the Avery C. Upchurch Government Complex, presented by the City of Raleigh Arts Commission, 222 West Hargett Street, Raleigh. **Through July 16** - "Presence". Responding to interactions and boundaries between subject, artist and viewer created through the use of scale, physical space, color and focus. Block Gallery: Photographs by Lydia Anne McCarthy and paintings by Mia Yoon. Block2: "Systemic" by Kia Mercedes Carscallen. A reception will be held on June 7, from 5-7pm. Hours: Mon.-Fri., 8:30am-5:15pm. Contact: 919/996-3610 or at (www.raleigh-nc.org/arts).

Nature Art Gallery, inside the Museum Store, North Carolina Museum of Natural Sciences, 11 W. Jones Street, downtown Raleigh. **Through July 1** - "Color on Clay, II," featuring an exhibit of new pottery by John Garland and Mary Paul, owners of the Knightdale pottery studio. **July 6 - 29** - "Portraits from Nature," featuring works by Chuck Carmack. Admission: Free. Gallery Hours: Mon.-Sat., 9am-4:45pm & Sun., noon-4:45pm. Store Contact: 919/733-7450, ext. 360 or at (www.naturalsciences.org/store/nature_gallery.html).

North Carolina Museum of Art, 2110 Blue Ridge Road, Raleigh. **East Building, Meymandi Exhibition Gallery, Through July 29** - "El Anatsui: When I Last Wrote to You about Africa". The exhibition traces the prolific career of El Anatsui - one of contemporary art's most celebrated practitioners - from his early woodwork in Ghana to today's metal wall sculptures created in his studio in Nigeria, offering an unprecedented chance for visitors to follow the artist's creative development over 40 years. Of the 61 works, the exhibition includes eight spectacular metal wall sculptures in the same style as the NCMA's own stunning El Anatsui sculpture in West Building, "Lines that Link Humanity" a visitor favorite. This expansive exhibition traces four decades of Anatsui's prolific career, including his early work making use of traditional symbols in Ghana; driftwood pieces created in Denmark; chainsaw-carved wood work, metal assemblages, and draping bottle-top sculptures produced in Nigeria. **Through Aug. 19** - "Rhythms of the Heart: The Illustration of Ashley Bryan". The exhibition highlights the bright and colorful illustrations of the beloved children's book author whose work was first featured at the NCMA in "Fins and Feathers: Original Children's Book Illustrations from The Eric Carle Museum of Picture Book Art". In this exhibition viewers will be able to experience Bryan's unique illustration style, which combines references to music, dance, and storytelling traditions. The exhibition includes Bryan's original preliminary pencil drawings, watercolor sketches, and completed wood-block prints, ultimately presented in award-winning books that retell African folktales for young audiences. **West Building, Ongoing** - Featuring 10 additional sculptures by the celebrated French artist Rodin on loan from Iris Cantor's private collection. **Ongoing** - "John James Audubon's The Birds of America". The state has owned this treasured volume since 1848, but it has never been exhibited. **Ongoing** - The North Carolina Museum of Art has an outstanding permanent collection of more than 5,000 objects spanning antiquity to the present day. On the occasion of the expansion, the Museum has acquired more

than 100 new works of art. Representing commissions, gifts, and purchases, the new works encompass important and diverse examples of historic and contemporary art from around the world, and will be installed in the Museum's new building and the surrounding landscape. Highlights include a gift of 28 sculptures by Auguste Rodin, and work by such internationally acclaimed artists as Roxy Paine, Ursula von Rydingsvard, El Anatsui, Jaume Plensa, Jackie Ferrara, Ellsworth Kelly, and David Park, among others. Hours: Tue.-Sat., 9am-5pm; Sun., 10am-5pm; & open until 9pm on Fri. Contact: 919/839-6262 or at (www.ncartmuseum.org).

North Carolina Museum of History, 5 East Edenton Street, (between Salisbury and Wilmington Streets), Raleigh. **Ongoing** - Featuring exhibits dealing with North Carolina's history as a theme. Admission: Free. Hours: Mon.-Sat., 9am-5pm & Sun., noon-5pm. Contact: 919/807-7900 or at (<http://www.ncmuseumofhistory.org/>).

Rotunda Gallery, Johnson Hall, Merideth College, 3800 Hillsborough Street, Raleigh. **Through Aug. 26** - "Annual Juried Student Art Exhibition". This annual survey exhibition highlights the range and depth of Meredith College's art students' work in sculpture, painting, drawing, photography, textiles, graphic design, ceramics, and mixed media. Hours: Mon.-Fri., 9am-5pm & Sat.-Sun., 2-5pm. Contact: 919/829-8465 or at (<http://www.meredith.edu/art/gallery.htm>).

ALTERNATE ART SPACES - Raleigh **City Plaza**, 400 Block of Fayetteville St., downtown Raleigh. **Through Aug. 31** - "Art on City Plaza," featuring 10-15-ft sculptures by Robert Coon, Deborah Marucci and Adam Walls. Sponsored by City of Raleigh Arts Commission, Visual Art Exchange & Artspace. Contact: (www.raleighnc.gov/arts).

Rocky Mount

Four Sisters Gallery, Dunn Center for the Performing Arts, NC Wesleyan College, 3400 N. Wesleyan Blvd., Rocky Mount. **Through Oct. 13** - "Humanity: Selections from the Permanent Collection 1952 to 2012". From the origin of the Four Sisters Collection of Self-Taught Visionary Art when the Robert Lynch Collection of Outsider Art gave foundation and the collecting impetus to the NC Wesleyan College's Four Sisters Gallery in 1987, the collection continues to grow and focus on our kind. Hours: Mon.-Fri., 9am-5pm & Sat., 9am-noon. Contact: 252/985-5268.

Maria V. Howard Arts Center, Imperial Centre for the Arts and Sciences, 270 Gay Street, Rocky Mount. **Through Aug. 15** - "Salmagundi XV," a national juried outdoor sculpture competition. And three exhibits from the Embroiderers' Guild of America. Hours: Tue.-Sat., 10am-5pm & Sun., 1-5pm. Contact: 252/972-1163 or at (<http://arts.imperialcentre.org/>).

Mims Gallery, Dunn Center for the Performing Arts, NC Wesleyan College Campus, 3400 N. Wesleyan Blvd., Rocky Mount. **Through Aug. 12** - "The Dog Show," featuring a group show of painting focused on dogs. This exhibition features four artists who treat the subject matter of dogs differently from realistic portraiture, surrealist levity, expressionist concern, to pop personification. Hours: Mon.-Fri., 9am-5pm & one hour before performances. Contact: call 252/985-5268 or at (www.ncwc.edu/Arts/Mims/).

North Civic Gallery, Dunn Center for the Performing Arts, NC Wesleyan College Campus, 3400 N. Wesleyan Blvd., Rocky Mount. **Through Sept. 28** - Featuring an exhibit of 44 drawings by quadriplegic graduating senior from Southern Nash High School, Daylon Jones. Jones is a gifted artist; he is a fantastic draughtsman, pencil is his preferred medium. Hours: Mon.-Fri., 9am-5pm & one hour before performances. Contact: call 252/985-5268 or at (www.ncwc.edu/Arts/Mims/).

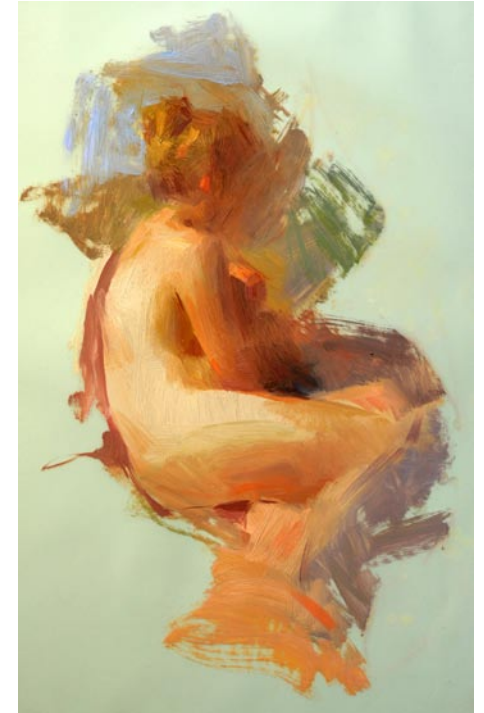
Rutherfordton

Rutherford County Visual Artists Gallery, Rutherford County Visual Arts Center, 160 N. Main St., Rutherfordton. **Ongoing** - Featuring works by members of the Rutherford County Visual Artists Guild in a wide variety of media. Hours: Tue.-Sat., 10am-3pm and Fri. till 6:30pm. Contact: 828/288-5009, e-mail at (rcvartg@gmail.com) or at (www.rcvag.com).

Salisbury/Spencer

Throughout Salisbury & Spencer, July 8, from 1-5pm - "Second Saturday Art Crawl," where more than 20 professional artists, studios and galleries offer visitors new art, special events, and activities. Spend the day and see great art, talk to artists, hear live music, and dine at local restaurants. Free admission to all events and activities. Maps are available at the Visitor Center in Salisbury and at all participat-

ing venues. Free parking available in all locations. For more info call 704/638-9887 or visit (www.rowanartcrawl.com).



Work by Susan Lyon

Waterworks Visual Arts Center, 123 E. Liberty St., Salisbury. **Through Aug. 11** - "Discerning Eye: From Realism to Abstraction". Figurative artist Scott Burdick (King, NC) travels extensively throughout the world to observe diverse cultures, costumes and customs, and captures the humanity of those subjects in his body of work "Beauty Across Cultures". Self-taught artist, Cassandra Gillens' (Beaufort, SC) paintings feature silhouette figures saturated with vivid colors and simplified forms. Born in Massachusetts, her earliest memories are drawing with colored chalks on the sidewalks of Roxbury. Artist Susan Lyon (King, NC) was inspired to take drawing classes after seeing a television show featuring Georgia O'Keefe. Her body of work "Seeing the Figure through Color and Form," depicts her true love of painting the figure. Painter and mixed media artist Terry Thirion's (Charlotte, NC) abstract body of work intrigues the viewer and invites them to discover the little surprises embedded in each piece. Encaustic artist Felicia van Bork (Davidson, NC) creates artwork that explores origin and evolution of consciousness. Her encaustic portraits featured in her body of work "Portraits Just In Time" use exquisite color and texture, drawn from observation, that result in spirit and energy. Admission: Free, donations appreciated. Hours: Mon.-Fri., 10am-5pm; Thur. till 7pm & Sat., 11am-3pm. Contact: 704/636-1882 or at (www.waterworks.org).

Seagrove

Museum of North Carolina Traditional Pottery, 122 E. Main St., Seagrove. **Ongoing** - The Museum organization was founded twenty-five years ago in Seagrove, and is dedicated to preserving and perpetuating the pottery tradition. We strive to impart to new generations the history of traditional pottery and an appreciation for its simple and elegant beauty. A display of area pottery is now offered in the old Seagrove grocery building. Hours: Mon.-Sat., 9:30am-3:30pm. Contact: 336/873-7887 or at (www.seagrovepotteryheritage.com).

The North Carolina Pottery Center, 233 East Avenue, Seagrove. **Through July 28** - "NC Student Ceramics Exhibit 1: High School". The NCPC will exhibit the best of NC high school ceramics. The purpose of this exhibit is to share with the public outstanding ceramics made by NC high school students. **Ongoing** - Featuring permanent and changing exhibits on the history of North Carolina pottery, "The North Carolina Pottery Tradition" and "Seagrove Area Pottery". The Center also offers information on activities, maps and information about the potteries located in the Seagrove area and across the state. A display of representative works from more than 90 area potteries is also offered. Hours: Tue.-Sat., 10am-4pm. Contact 336/873-8430 or at (www.ncpotterycenter.org).

Siler City

Throughout Siler City, July 20, 6-9pm - "Siler City Art Walk," featuring exhibits at many of the city's exhibit spaces, live entertainment, artist demonstrations, food, local wine or beer tastings, offered in town on the 3rd Fri. of the month. Hosted by the North Carolina Arts Incubator. Contact: 919/663-2072 or at (www.ncartsincubator.org).

CCCC Student Gallery, 138 N. Chatham Ave., Siler City. **Ongoing** - Featuring works by Central Carolina Community College Pottery and Sculpture students and faculty. Hours: Mon., Tue., & Thur., 9:30am-4pm and on the 3rd Fri. each month from 6-9pm. Contact: 919/742-

continued on Page 40