

Sandpiper Gallery, Sullivan's Island

continued from Page 8

has been noting a heart shape (not a legitimate form of course) in many of her pieces; say, within the branches of trees, the edges of petals, the angle of a bird's wing. The concept of a show with the heart shape as a theme evolved and came to fruition.

Celebrating its 11th anniversary this year, Sandpiper Gallery has become a center of the island art community. There is a casual funky flair to Sullivan's Island which is echoed in Sandpiper Gallery. Fine pieces of art are regularly carried away by happy barefooted clients on their bicycle or golf cart. The range of art represented at this gallery is very eclectic; from fine paintings by some of the same artists represented at sister gallery, Edward Dare Gallery on Gallery Row, in downtown Charleston, SC, to a wide variety of fine American craft. The gallery also features a wide variety of pottery, exquisite jewelry, plus unique works in wood, glass and metal. Paintings, sculpture, pottery and jewelry that celebrate the colorful tapestry of the southern coastal culture abound in this gallery.

Whether you are a local or visiting the lowcountry, make sure you make the



Work by Leslie Pratt-Thomas

time for a jaunt out to charming Sullivan's Island, just off the coast of Mt. Pleasant, SC, and 10 minutes from Charleston - have a memorable dining experience at one of the many restaurants and then satisfy your soul at Sandpiper Gallery.

For further information check our SC Commercial Gallery listing, call the gallery at 843/883-0200 or visit (www.sandpiper-gallery.net).

Wells Gallery in Charleston, SC, Features Works by Mark Catesby

The Wells Gallery in Charleston, SC, will present the exhibit, *Mark Catesby (1683-1749) - A Tercentennial Celebration*, featuring, limited edition lithographs of Catesby's original watercolors, celebrating the 300th Anniversary of Catesby's voyage from England to America to document the flora and fauna of the Southeast, on view from July 13 - 31, 2012. A special ticketed only reception will be held on July 13, from 5:30-7:30, along with Social Wine Bar, as part of the Charleston Fine Art Dealers Association's Seventh Annual Palette and Palate Stroll. For ticket info visit (www.cfada.com).

Mark Catesby was born April 3, 1683 and was baptized in Castle Hedingham, Essex. Catesby studied natural history in London before coming to Virginia in 1712. He was an early naturalist from London who made two trips to America, once in 1712 and then later in 1722. While in America he traveled extensively throughout the Lowcountry, including Kiawah Island.

Catesby stayed for seven years collecting botanical specimens and sketching the wildlife. Many of the species he recorded are now extinct. By recording the animals and the plants on which they fed, Catesby created a technique that was later adopted by John Audubon. He was later elected a member of the Royal society of London due to his two volume work *The Natural History of Carolinas, Florida and the Bahamas Islands*.

Catesby's *The Natural History of Carolinas, Florida and The Bahamas Islands* was the first natural history of American flora and fauna. First issued between 1731 and 1743, this work would eventually include 220 prints, which for the first time systematically illustrated American birds, animals



Anona Maxima by Mark Catesby and plants. It was not only the first fully-illustrated natural history of North America, preceding Audubon, but also a major contribution to both art and science.

Catesby is considered one of the greatest naturalists of the eighteenth-century. The Wells Gallery has a great opportunity to offer a diverse selection of the reproductions from Catesby's original work. These unique prints were created by Alecto Historical Editions which was granted printing rights by The Queen in 1996. The editions are limited to fifty complete sets, numbered 1/50 through 50/50, only 10 in each set were released for public sale.

For further information check our SC Commercial Gallery listings, call the gallery at 843/853-3233 or visit (www.wellsgallery.com).

Ella Walton Richardson Fine Art in Charleston, SC Features Works by Stapleton Kearns and Scott Moore

Ella Walton Richardson Fine Art in Charleston, SC, will present the exhibit, *Southern Perspectives*, featuring works by New England artists, Stapleton Kearns and Scott Moore, on view from July 1 - 31, 2012. A reception will be held on July 6, from 5-8pm, during the Gallery Row Art Walk. These works will be on display during the annual Palette and Palate Stroll hosted by the Charleston Fine Art Dealers' Association on July 13 (a ticketed event).

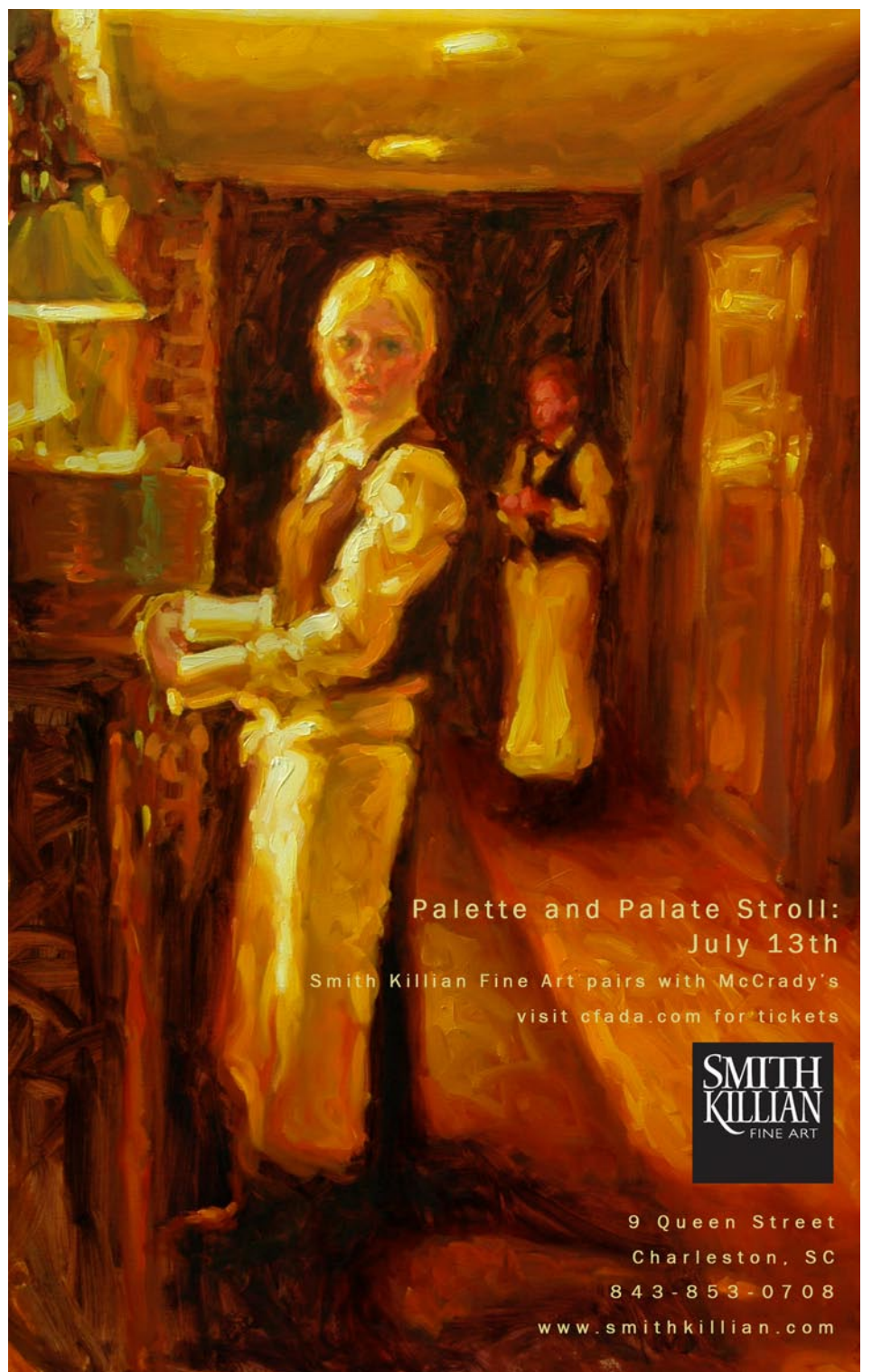
The new works will feature vibrant spring and summer scenes spanning the Lowcountry. Both artists travel to Charleston at least once a year for a couple of weeks at a time to paint the local beauty.

This spring they made every day of their visit count by spending their days chasing the light and capturing the beauty that our special area is so well known for.

Stapleton Kearns lives in New Hampshire and paints predominantly plein-air style, on-site in the elements no matter the harsh temperatures or dismal weather. He tells people, "If I'm awake, then I'm painting!" He spares nothing in detail or the time it takes to complete a perfect painting.

Scott Moore is best known for his unique architectural renderings. His downtown Charleston scenes are eye-catching, with vibrant rooftops scenes that lend extraordi-

continued above on next column to the right



Palette and Palate Stroll:
July 13th

Smith Killian Fine Art pairs with McCrady's
visit cfada.com for tickets

SMITH
KILLIAN
FINE ART

9 Queen Street

Charleston, SC

843-853-0708

www.smithkillian.com

nary views of downtown - from the harbor and its striking Ravenel Bridge to familiar streets like Broad, Tradd, and Meeting. He also has a knack for capturing rural charm, painting the cottages and dirt roads of the outlying areas around town. Moore hails from Maine and has been professionally painting for over three decades.

Both artists use brilliant color - and while they have very different styles, their individual depictions of the lowcountry always highlight the natural beauty of the area. Kearns and Moore packed in the plein air painting when they were in town, covering McClellanville to Edisto, SC, and everything in between.

For further information check our SC



Work by Scott Moore

Commercial Gallery listings, call the gallery at 843/722-3660 or visit (www.ellarichardson.com).

Rick Rhodes Photography and Imaging in Charleston, SC, Features Works by Steve Johnson and Vanessa Gonzalez

Rick Rhodes Photography and Imaging in Charleston, SC, is presenting the exhibit, *Inside / Outside*, featuring the work of Steve Johnson and Vanessa Gonzalez, on view through July 13, 2012. The exhibit is a collection of drawings and paintings inspired by the artists' immediate surroundings.

Steve Johnson's recent work is inspired by the birds and rodents that visit his backyard. Chickadees and rats are depicted interacting in a variety of ways, generating open ended and ambiguous narratives. The work does not assign simplistic roles to each group, but muddles and interweaves the two, creating story lines that explore the gray areas inhabiting the space between good and bad. Steve Johnson is currently an Assistant Professor of Drawing at the College of Charleston.

Vanessa Gonzalez's work is collaborative in nature - not with another artist, but with her dog, Mick. She gathers her ideas



Work by Steve Johnson

from the stuffed animals that Mick has destroyed and left lifeless. Each finished painting commemorates the toys as a symbol of Mick's conquests and serve as a reflection of the artist's environment and personal history. Gonzalez is from Santa Fe, NM, and currently has a studio in Charleston.

For more info check our SC Commercial Gallery listings, call 843/766-7425 or visit (www.rickrhodesphotography.com).

You can contact us by calling 843/825-3408 or by e-mail at - info@carolinaarts.com but do it before the 24th of the month prior to our next issue.