

Sunset River Marketplace

continued from Page 25

of performing, literary and visual arts in the area. The 10,000 square-foot gallery features work by over 200 North and South Carolina artists. Its on-site pottery studio has two kilns and three wheels for use by students. Ongoing oil, pastel and watercolor classes are also provided, in addition to workshops by nationally known artists. The gallery's complimentary Coffee With the Authors programs feature presentations by local and regional authors. A Paint & Party series provides a fun after-work experience for those with no previous art background. The gallery's framing department offers full-service, on-site custom frame design for artwork, family heirlooms and other memorabilia.

For further information check our NC Commercial Gallery listings, call the gallery at 910/575-5999 or visit (www.sunsetrivermarketplace.com). The



Work by Jill Hope

gallery's Facebook page, which is updated daily (www.facebook.com/sunsetrivermarketplace), also lists special events, new artists and other happenings.

Carolina Arts is now on Twitter!

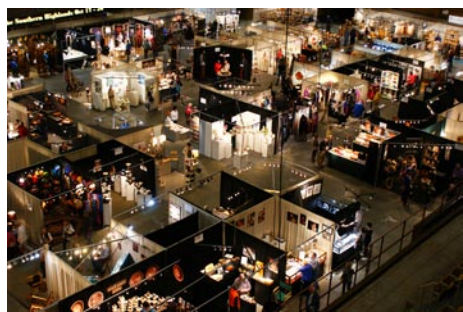
Sign up to follow Tom's Tweets, click below!



twitter.com/carolinaarts

The 68th Annual Craft Fair of the Southern Highlands Takes Place in Asheville, NC - July 16-19, 2015

Join us for the 68th Annual Craft Fair of the Southern Highlands at the US Cellular Center in downtown Asheville, NC, July 16 – 19 and Oct. 15 – 18, 2015. Nearly 200 juried artists of the Southern Highland Craft Guild will be selling works of clay, metal, wood, jewelry, fiber, paper, natural materials, leather and mixed media. With styles ranging from traditional to contemporary, the Fairs showcase the rich talent, diversity and craft mastery of Guild members.



The Craft Fairs have a proud tradition and history of excellence by representing the Southern Highland Craft Guild, a non-profit organization formed in 1930. The Fairs began in 1948 as a way to provide a regional market for the mountain craftspeople. Since that time, the Craft Fairs have set the standard for fine craft shows across the country. Each year in July and October craft collectors and gallery owners from across the country come to Asheville to see the show. They are joined by western North Carolina residents and tourists who appreciate the quality and history of the show, knowing it is an ideal destination for shopping and inspiration. Nearly 20,000 visitors to the Fairs each year invest in the regional and local economies while supporting artists working in the Appalachian mountains, and by spending a summer or fall week-

end in beautiful Asheville.

In addition to providing a retail market for juried members, the Guild hosts craft demonstrations during the Fairs. A strong part of the Guild's mission is to educate the public about the history of crafts in this region, various craft techniques, and an appreciation for fine crafts. The July show features wet felting, sunprinting, natural dyeing, bamboo fly rods and blacksmithing. Visit (www.craftguild.org) for a complete list of scheduled craft demonstrations.

Beginning on Friday during each Craft Fair, mountain musicians perform live on the arena stage. Since the first fair in Gatlinburg, TN, in 1948, the music of the area has been woven into the fabric of the Craft Fair experience. From old time to bluegrass, this tradition is kept alive today. Visit (www.craftguild.org) for a complete list of performances.

"Creating a world in which craft and other native talents can flourish – this is the Guild's legacy. The craftspeople of Southern Appalachia are always aware of tradition and forever renewing themselves from the old sources of nature, family, spiritual life and the desire to share one's gifts with others," says Jan Davidson, Director, John C. Campbell Folk School.

The Southern Highland Craft Guild is a non-profit, educational organization established in 1930 with headquarters at the Folk Art Center on the Blue Ridge Parkway in Asheville. The Guild region covers the mountain counties of nine southeastern states from Maryland to Alabama, representing over 900 craftspeople. The Craft Fairs are one of the ways in which the Guild fulfills its mission which is to bring together the crafts and craftspeople of the Southern Highlands for the benefit

continued above on next column to the right

Wilmington Art Association

The Premier Visual Arts Organization of the Cape Fear Coast

Annual Juried Spring Show and Sale
Workshops Led by Award-Winning Instructors
Exhibit Opportunities
Monthly Member Meetings (2nd Thurs of Month) and Socials
Member Discounts
Field Trips, Paint-Outs, Lectures and Demonstrations

CALL FOR ARTISTS! Art in the Arboretum Oct 2-4, 2015

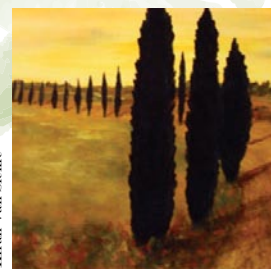
Now accepting entries. Deadline to submit is Sept 18, 2015. The show is open to 2D & 3D artists, professional and emerging, 18 years & older. See wilmingtonart.org



Dorian Hill



Elaine Cooper



Kirrah Van Sickle

Membership is open to artists & art lovers alike

Join Today & Support Local Art
www.wilmingtonart.org



of shared resources, education, marketing and conservation. To learn more about Guild programs, visit (www.craftguild.org).

The US Cellular Center is located at 87 Haywood Street in downtown Asheville. The Fair is open 10am-6pm, Thur. – Sat., and 10am-5pm, Sun. Admission is \$8 for Adults and children under 12 are free. Group discounts are available.

For further information check our NC Institutional Gallery listings, call 828/298-7928 or visit (www.craftguild.org).



Asheville Art Museum in Asheville, NC, Offers Exhibit of Male Quilters

The Asheville Art Museum in Asheville, NC, is presenting *Man-Made: Contemporary Male Quilters*, an exhibition that examines the unique aesthetics and techniques that men bring to a craft long-associated with feminine arts and labor, on view through Dec. 27, 2015. A reception will be held on July 3, from 5-8pm.

With backgrounds in contemporary visual art, media and fashion, the eight artists featured in the exhibition have been identified as leading makers whose quilts act as non-functional art pieces. Though quilting is culturally viewed as "women's work," men have participated in quilting since the early 1800s in both professional and domestic capacity. The art quilt movement developed in the 1980s as a practice akin to painting, led by professional artists rather than domestic makers.

The eight exhibiting artists are Joe Cunningham, Luke Haynes, Jimmy McBride, Aaron McIntosh, Joel Otterson, Dan Olfe, Shawn Quinlan and Ben Venom. These artists are part of a loosely-knit, growing community of male quilters whose quilts utilize striking imagery and compositions to navigate their interests and concerns. Though there are innumerable male quilters nationwide, these artists were selected as significant contributors to the evolution of the quilting medium through their unique training and experiences in visual, media and design arts.



Ben Venom, "Killed by Death", 2013, fabric, 75 x 50 inches. Courtesy of the Artist.

This exhibition is organized by The Craft & Folk Art Museum in Los Angeles. Thank you to the Judy Appleton Memorial Fund for its sponsorship of this exhibition.

For further information check our NC Institutional Gallery listings or visit (www.ashevilleart.org).