

# West Main Artist Co-op

continued from Page 5

that I admire for using art as a way to bring joy and comfort to others and to express meaning through words and texts ..... each piece has a special meaning for the viewer to connect with. When you see one of his Guardians you know that the place where it is displayed holds special meaning to someone or some group."

Neely says of their collaboration, "When Chip invited me to consider a joint show with her at the West Main Artists Co-op, I said yes immediately." *Applauding God / Reflections of the Spirit* is the joint show that has resulted from their collaboration.

Chip Walters is a graduate of Converse College and has been teaching at the SC School for the Deaf and the Blind for 28 years. Since 2004 she has been the Director of Fine Arts at SCSDB and is a National Boards Certified Exceptional Needs Specialist. She is the director for many theatre productions at SCSDB and coordinates all Fine Arts activities for the agency.

Walters creates abstract art inspired by Bible truths, often using verses and words. Each piece of art in this exhibit reflects an applause to God. Several pieces of art will be donated to The Journey, an inner-city church where Walters serves as Kid's Camp Coordinator.

Kris Neely is a graduate of Wofford College, he earned his MFA from Goddard College in Plainfield, VT. He currently serves as Assistant Dean and Coordinator for Studio Art at Wofford. He teaches courses on painting, installation, street art, and digital photography and serves as the Assistant Dean and Co-ordinator for Studio Art at Wofford. Neely is the founding artist and owner of Wet Paint Syndrome Art Studio, LLC in Hillcrest Specialty Row.

Since 2005, Neely has painted more than 8,000 of his "Guardians" on found wood. Inspired by self-taught and street artists, these Guardian angels have been installed in church sanctuaries, college campuses, public parks, homeless shelters and cemeteries. Recent notable installations of Neely's works include Ghost Ranch, New Mexico and Oxford Chapel at Emory University in Georgia.

The West Main Artist Co-op provides affordable studio and exhibition space for local artists. Locally made art is for sale in the Gallery Shop and the galleries. The Co-op is a nonprofit organization, funded in part by the South Carolina Arts Commission which receives support from the National Endowment for the Arts.

For further information check our SC Institutional Gallery listings, call the Co-op at 864/804-6501 or visit ([www.westmainartists.org](http://www.westmainartists.org)).



Work by Kristofer Neely

## Carolina Gallery in Spartanburg, SC, Features Works by Bonnie Goldberg and Michelle Petty

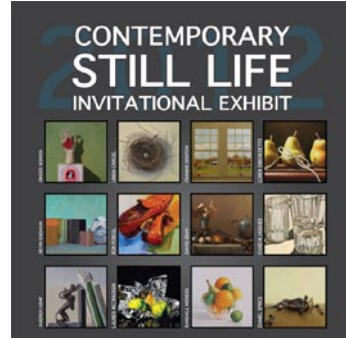
Carolina Gallery in Spartanburg, SC, is presenting an exhibit of works by Bonnie Goldberg and Michelle Petty, on view through Sept. 30, 2012.

Bonnie Goldberg is a figurative painter and mixed media artist living in Columbia, SC. Her work centers around the female form, often rendered from direct observation. When creating her artwork Goldberg seeks to find each personal gesture that belongs to the model and translate it into the essence of who she is in that moment in time.

Michelle Petty is a ceramic artist living in North Augusta, SC. She received her BA in

Art Education from Converse College and is currently teaching ceramics and managing the gallery store at the Aiken Center for the Arts. Petty's hand built figures of the female form convey an unending variety of moods and emotions through posture and facial features. She explains that curvilinear, biomorphic form interests her and that she tends to exaggerate the natural curves of the female figure to the point of abstraction.

For further information check our SC Commercial Gallery listings, call the gallery at 864/585-3335 or visit ([www.carolinagaleryart.com](http://www.carolinagaleryart.com)).



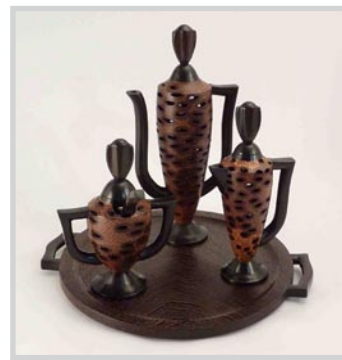
THROUGH OCT 20, 2012

**Contemporary Still Life**  
Invitational Exhibit:  
A Collaborative Two Venue  
Exhibit by SAM & USC Upstate  
Curated by Dr. Henry Fagen

Sept. 20: Art Walk - Gallery Talk at SAM  
by Dr. Fagen at 7 pm

Sept. 28 - Oct. 26: Exhibit Opens at USC  
Upstate's Curtis R. Harley Art Gallery

Oct. 11 at 4:30 pm: Lecture & Reception  
for the Exhibit at USC Upstate



SEPT 20 - NOV 3, 2012

**THE ARTISTS' GUILD OF SPARTANBURG'S 39th Annual Juried Exhibition**  
with a special documentary exhibit  
about the Guild's early years

200 East St. John St • Spartanburg, SC • (864) 582-7616  
[www.spartanburgARTmuseum.org](http://www.spartanburgARTmuseum.org)

SAM is funded in part by The Arts Partnership and its donors, the County and City of Spartanburg, the South Carolina Arts Commission which receives support from the National Endowment for the Arts, The George Ernest Burwell, Jr. Fund, The Lucile F. Kohler Fund for the Spartanburg Art Museum, and the Annual Art & Antique Show.



**ARTISTS GUILD GALLERY of GREENVILLE**

An Eclectic Mix of Artists  
NANCY BARRY DOTTIE BLAIR  
GERDA BOWMAN LAURA BUXO  
DALE COCHRAN ROBERT DECKER  
KATHY DuBOSE EDITH McBEE HARDAWAY  
CHRIS HARTWICK KEVIN HENDERSON  
RANDI JOHNS  
DIARMUID KELLY  
JOHN PENDARVIS  
DAVID WALDROP

200 N. Main St., Greenville, SC • 864.239.3882

### GALLERY HOURS

Monday - Saturday 10am to 6pm  
Sunday 1pm to 5pm  
[artistsguildgalleryofgreenville.com](http://artistsguildgalleryofgreenville.com)



Don't see info here about your exhibit or your gallery space?  
The deadline each month to submit articles, photos and ads is the 24th of the month prior to the next issue. This will be Sept. 24th for the October 2012 issue and Oct. 24 for the November 2012 issue. After that, it's too late unless your exhibit runs into the next month. But don't wait for the last minute - send your info now.  
And where do you send that info?  
E-mail to ([info@carolinaarts.com](mailto:info@carolinaarts.com)) or mail to:  
Carolina Arts, P.O. Drawer 427, Bonneau, SC 29431