

SC Commercial Galleries

continued from Page 55

silversmith. Other media represented include fiber, wood, photography, baskets, paper, glass, metal, leather and handmade artisan products. Craft artists interested in exhibiting with Four Green Fields can find an "Artist Info Packet" on the website. Hours: Mon.-Sat., 10am-5pm. Contact: 843/261-7680 or at (www.fourgreengalleries.com).

Imperial Framing & Specialties, 960 Bacons Bridge Road, Palmetto Plaza, Summerville. **Ongoing** - Featuring works by Lowcountry artists. Hours: Mon.-Fri., 10am-6pm & Sat., 10am-2pm. Contact: 843/871-9712.

People, Places, & Quilts, 129 W. Richardson Avenue, Summerville. **Ongoing** - Featuring fabric, books, patterns, notions, quilts and Folk Art. Hours: Mon.-Fri., 10am-5:30pm and Sat., 10am-5pm. Contact: 843/937-9333 or at (www.ppqilts.com).

Tea Farm Cottage, 808 N. Cedar St., Summerville. **Ongoing** - Featuring works by the largest group of artisans and crafters in the tri-county area with 90 sellers under one roof, plus locally-made foods and antiques. Monthly arts and crafts shows on our 1/2 acre property. Hours: Mon.-Sat., 11am-5pm. Contact: 843/871-1113.

Treasure the View - Sand Carved Glass, 129 1/2 W. Richardson Ave., Summerville. **Ongoing** - Unique sand carved glass sculptures created by renowned artist Lex Melfi. Each piece is a one-of-a-kind masterpiece produced by cutting images into glass using high-pressured sand. Hours: by appt. only. Contact: 843/875-7822 or at (www.lexmelfi.com).

Sumter

Elephant Ear Gallery Fine Arts and Creations, 672 Bultman Dr., Sumter. **Ongoing** - Featuring works by 23 artists offering every medium from watercolor to angora grown rabbits producing fur for spinning. Hours: Mon.-Sat., 10am-6pm. Contact: 803/773-2268.

Travelers Rest

White Rabbit Fine Art Gallery, 5 So. Main Street, Travelers Rest. **Ongoing** - Our ongoing exhibit is ever-changing and features the work of the founding members of the Gallery; all are local artists from the Upstate area. Hours: Tue.-Sun., 11am-5pm; Fri. & Sat., 11am-6pm and later on First Fri. Contact: Patty Cunningham at 610/659-4669; or Susan Savage at 864/903-3371; or at (<http://www.artintr.com/white-rabbit-gallery.html>).

NC Institutional Galleries

Aberdeen

The Exchange Street Gallery of Fine Art, 129 Exchange Street, in the old Aberdeen Rockfish Railroad storage terminal, Aberdeen. **Through Sept. 8** - "Small Gems of Art," featuring works by gallery members. **Sept. 8 - 28** - "Wild - and Not So Wild," featuring works by Betty Hendrix. A reception will be held on Sept. 8, from 5-7pm. **Ongoing** - The Artist's League of the Sandhills currently houses 35 artists-in-residence studios and offers classes by local professional artists and workshops by nationally known artists. Hours: Mon.-Sat., noon -3pm. Contact: 910/944-3979, or at (www.artistleague.org).

Alamance County

BAL Gallery, Holly Hill Mall and Business Center, 309 Huffman Mill Rd., Exit 141 off of I85/I40, Burlington. **Ongoing** - Since the beginning of Burlington Artists League in 1972, we have grown to represent many local artists in our immediate area. BAL's express purpose is to promote and elevate the area artists and their fine art spirit in Burlington, NC, and surrounding areas, thereby creating outlets for the artists and encouraging their continuing efforts to improve and create more art work. Along with wall art and bin reproductions, the BAL Artists Gallery also includes 3-D art such as sculptures and pottery. Hours: Mon.-Fri., noon-8pm; Sat., 10am-9pm, & Sun. for special events. Contact: 336-584-3005 or at (<http://balartists.com/joomla/>).



Work by Susan Scribner Reed

1873 Capt. James & Emma Holt White House, 213 South Main Street, 2 1/2 blocks off I85/I40, exit#147, Graham. Home of the Alamance County Arts Council. **Oct. 5 - 16** - "AAG Art Extravaganza Preview Exhibit". Enjoy viewing a selection of art created by all 25 participating artists of the Art Extravaganza, the evolution of the Studio Tour. **Ongoing** - We are committed to shaping the cultural identity of Alamance County by making art a tangible presence in the lives

of its citizens. We strive to enhance the quality of life by engaging people in a diverse array of art through the delivery of programming and education, and through the provision of facilities, advocacy, promotion, and funding. **Ongoing** - Picasso's Gift Shop, located in the Captain White House, promises unique finds of local, regional, and international art. The beautiful arts and craft items sold in the store help support the artist in the community. Featuring a wide variety of art, pottery and glass. Admission: free. Hours: Mon.-Sat., 9am-5pm. Contact: 336/226-4495 or at (<http://www.alamancearts.org/>).



Work by Kathleen Gwinnett

ALTERNATE ART SPACES - Alamance Co. **Vailtree Event and Conference Center**, 1567 Bakatsias Lane, Haw River, **Oct. 14, 10am-5pm & Oct. 15, noon-5pm** - "Alamance Artisans Guild Annual Art Extravaganza". This event includes 25 guild members showcasing and selling their one-of-a-kind pieces of art created in a vast variety of media, including painting, pottery, photography, colored pencils, pastels, jewelry, sculpture, textiles, fibers, and mixed media. It is free and open to the public for the casual browser, gift seeker, or avid art collector. Contact: visit (www.alamanceartisans.com).

Albemarle

Falling Rivers Gallery, 119 West Main St., next to Starnes jewelers, Albemarle. **Ongoing** - The gallery is a cooperative venue of the Stanly Arts Guild. Member staffed, this gallery offers the very best in local art and crafts including oil and watercolor, photography, pottery and ceramic art, jewelry, native American art, gourd sculpture and much more. Hours: Tue.-Fri., 10am-5pm; Thur. till 6:30pm & Sat., 10am-4pm. Contact: 704/983-4278 or at (www.fallingrivers-gallery.com).

Asheville Area

Asheville Art Museum On The Slope, 175 Biltmore Avenue, Asheville. **Through Sept. 17** - "Home Land," which features a number of southeastern Native artists who honor their ancestral land through their work. Hours: Tue.-Sat., 10am-5pm & Sun. 1-5pm. Contact: at (www.ashevilleart.org).

Asheville Art Museum, 2 South Pack Square at Pack Place, Asheville. **Ongoing** - The Museum is temporarily closed for major construction as we create the new Asheville Art Museum. Contact: 828/253-3227 or at (www.ashevilleart.org).

Asheville Gallery of Art, Ltd., 82 Patton Avenue, across from Pritchard Park opposite the old location, Asheville. **Sept. 1 - 30** - "Radiant Fall," featuring works by Judy Rentner, whose brilliantly colored landscapes usher in the fall season. A reception will be held on Sept. 1, from 5-8pm. The artist works in oils, using a palette knife to create intricate texture when applying her colors. **Ongoing** - Featuring original works of art by 31 local artists in oils, acrylics, watercolor, pastel, encaustic, and prints. Hours: Mon.-Sat., 11am-6pm, Sun., 1-4pm and first Fri. of the month till 8pm. Contact: 828/251-5796 or at (www.ashevillegallery-of-art.com).

Black Mountain College Museum + Arts Center, 56 Broadway, Asheville. **Through Sept. 2** - "Robert Motherwell: The Quiet + The Wild," will feature a selection of the former BMC instructor and acclaimed Abstract Expressionist's work from 1965 to 1990. **Sept. 29 - Dec. 30** - "Active Archive: Martha McDonald". The "Active Archive" represents an ambitious new direction for Black Mountain College Museum + Arts Center (BMCM+AC), both programmatically and artistically. While BMCM+AC has included contemporary work in past exhibitions, this will be the first time it commissions new work and offers an artist residency. McDonald's project will bring the archive and ideas, in both BMCM+AC exhibition spaces in downtown Asheville. The project includes an exhibition, a 96-page catalogue, and community programs including a performance, conference presentation, and a gallery walk-through/talk. **Ongoing** - An exhibition space dedicated to exploring the history and legacy of the world's most acclaimed experimental educational community, Black Mountain College. Hours: Wed.-Sat., noon-4pm or by appt. Contact: 828/350-8484 or at (www.blackmountaincollege.org).

Black Mountain College Museum + Arts Center, 69 Broadway, Asheville. **Through Sept. 2** - "Frank Hursh: Marking Space + Place," will display a collection of Hursh's paintings and drawings. **Sept. 29 - Dec. 30** - "Active Archive: Martha McDonald". The "Active Archive" represents an ambitious new direction for Black Mountain College Museum + Arts Center (BMCM+AC), both programmatically and artistically. While BMCM+AC has included contemporary work in past exhibitions, this will be the first time it commissions new work and offers an artist residency. McDonald's project will bring the archive and ideas, in both BMCM+AC exhibition spaces in downtown Asheville. The project includes an exhibition, a 96-page catalogue, and community programs including a performance, conference presentation, and a gallery walk-through/talk. Hours: Wed.-Sat., noon-4pm or by appt. Contact: 828/350-8484 or at (www.blackmountaincollege.org).

Flood Gallery Fine Arts Center, 109 Roberts St., Asheville. **Ongoing** - Dedicated to advancing the careers of emerging and mid career artists, as well as educating the public and furthering the understanding of contemporary art and its importance within the community and beyond. Hours: Mon.-Sat., 10am-4pm. Contact: 828/255-0066.

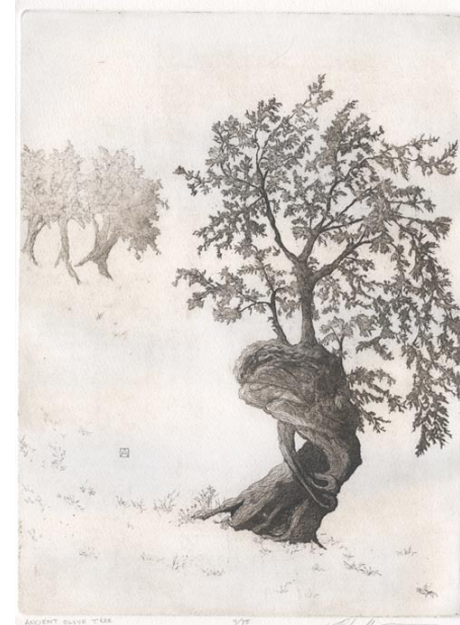
NC Homespun Museum, next to Grovewood Gallery, at Grove Park Inn, 111 Grovewood Road, Asheville. **Ongoing** - This museum presents a historical overview of Biltmore Industries, an Arts and Crafts enterprise once renowned for its hand-loomed fabrics. The museum showcases memorabilia including photographs, letters, artifacts, woven samples and tailored suits from the active years of the industry. Located on the historic Grovewood grounds, adjacent to The Omni Grove Park Inn. Admission is free (donations appreciated). Hours: Mon.-Sat., 10am-5pm, & Sun., 11am-5pm. Contact: 828/253-7651.

NC Glass Center, 140 Roberts Street, Suite C, Asheville. **Ongoing** - The North Carolina Glass Center is a non-profit, public access glass studio providing daily educational offerings & demonstrations. We are proud to represent the work of our artists and instructors in the NCGC glass gallery. Hours: Mon.-Sun., 10am-6pm. Contact: 828/505-3552 or at (www.ncglasscenter.org).

Odyssey Co-Op Gallery, 238 Clingman Avenue, Asheville. **Ongoing** - Our Gallery features 24 local clay artists, working in a variety of styles to create functional and non-functional pottery and works of figurative and abstract sculpture. Hours: Tue.-Sun., 11am-5pm. Contact: 828/285-9700 or at (<https://www.facebook.com/odysseycoopgallery>).

Southern Highland Craft Guild, Biltmore Village, 26 Lodge Street, former Biltmore Oteen Bank Building in Biltmore Village, Asheville. **Ongoing** - Featuring a wide range of work by members of the Southern Highland Craft Guild, including: pottery, glass, wood, jewelry, fiber, metal, paper, mixed media and natural materials. Hours: Mon.-Sat., 10am-7pm & Sun. noon-5pm.

Contact: 828-277-6222 or at (www.craftguild.org).



Work by Andrea Wilson

Southern Highland Craft Guild at the Folk Art Center, Blue Ridge Parkway Milepost 382, Asheville. **Sept. 16, 10am-4pm & Sept. 17, noon-4pm** - "37th Annual Heritage Weekend," a celebration of Southern Appalachian culture. This free celebration of mountain heritage held by the Southern Highland Craft Guild is sponsored by WNCW and features traditional crafts accompanied by music and dancing. A highlight of the weekend is the 37th Annual World Gee Haw Whimmy Diddle Competition on Saturday, from 2-3pm. A whimsy diddle is an Appalachian mountain toy traditionally made from two sticks of rhododendron. **Main Gallery, Through Sept. 17** - "Haywood Graduate Show: Class of 2017," featuring works by 19 students who share a creative journey in new Guild gallery show. With a 36-piece exhibit, featuring 19 students, the show continues the historical relationship between the Southern Highland Craft Guild and Haywood, an educational center member of the Guild. **Permanent Collection Gallery, Ongoing** - "Craft Traditions: The Southern Highland Craft Guild Collection". The Guild's Permanent Collection is comprised of approximately 2400 craft objects and dates from the late 19th century to present. Beginning with a donation from Frances Goodrich in 1931, the Permanent Collection serves the Guild's mission of craft conservation and education. This new installation will feature over 200 works that highlight our holdings in traditional art: woodcarving, pottery, dolls, basketry, weavings and furniture. The subject of this ongoing exhibition is craft history - that of the Southern Highland Craft Guild and the Studio Craft Movement. **Focus Gallery, Through Oct. 31** - "Inspiring Earth's Mysteries," featuring works by Guild members: Ronnie Hughes in glass, Carla and Greg Filippelli in basketry, Terry Gess in clay, Carmen Grier in fiber, Andrea Wilson in paper and Sam Johnson with fly rods. Hours: daily from 9am-6pm. Contact: 828/298-7928 or at (www.southernhighlandguild.org).

Southern Highland Craft Guild on Tunnel Road, 930 Tunnel Road, Asheville. **Ongoing** - Work by members of the Southern Highland Craft Guild in various media. Hours: Mon.-Sat., 9:30am-5pm. Contact: 828/298-7903.

The Center for Craft, Creativity and Design, 67 Broadway, Asheville. **Benchmark Gallery, Through Sept. 2** - "Tie Up, Draw Down". This exhibit explores weaving as a source for experimentation across media, genres, concept, and scale. Of the fifteen contemporary artists included in this exhibition, many hybridized weaving technologies, weave "the wrong way," or adapt and innovate weaving processes to encompass new media. Others do not weave at all, but find a rich avenue of inquiry within aspects or stages of weaving's complex field. Hours: Tue.-Sat., 10am-6pm. Contact: call 828/785-1357 or at (www.craftcreativitydesign.org).

YMI Gallery, YMI Cultural Center, 39 S. Market Street @ Eagle Street, Asheville. **Ongoing** - "In the Spirit of Africa". Featuring traditional and contemporary African masks, figurative woodcarvings, beadwork, jewelry, and textiles. Discover the purpose of mask and sculptures, which reflect African ancestral heritage and learn to appreciate symbolism and abstraction in African art. **YMI Conference Room, Ongoing** - "Forebears & Trailblazers: Asheville's African American Leaders, 1800s - 1900s". The permanent exhibit offers a pictorial history of African-Americans from throughout Western North Carolina. Photographs of both influential and everyday people create a panorama of the variety of life among blacks in the mountain region. Here are the young and old, the prominent and the unknown, the men and women who helped create our city's life. **YMI Drugstore Gallery, Ongoing** - "Mirrors of Hope and Dignity". A moving and powerful collection of drawings by the renowned African-American artist Charles W. White. **Entry, Ongoing** - "George

continued on Page 57