

Gibbes Museum of Art

continued from Page 4 / [back to Page 4](#)

The Gibbes enriches lives through art. Charleston's only art museum, we are committed to telling the story of Charleston's ever-changing landscape and its people. Including historical, modern, and contemporary works, our collection spans 350 years and features some of the country's most celebrated artists. With world-class rotating exhibitions and a dynamic visiting

artist residency program, there's so much to see inside. Set in the heart of downtown Charleston, the Gibbes is a southern museum with a global perspective.

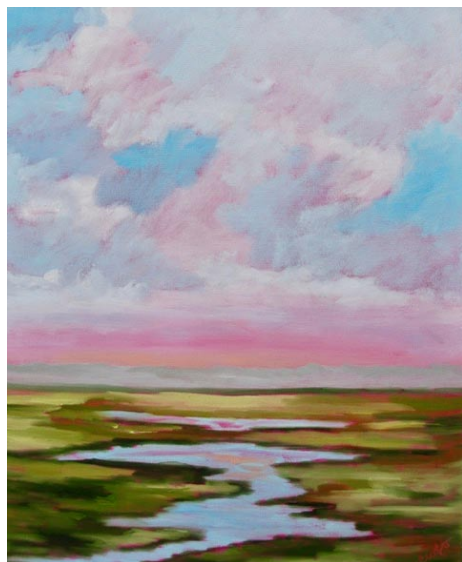
For further information check our SC Institutional Gallery listings, call the Museum at 843/722-2706 or at (www.gibbesmuseum.org).

Charleston Artist Guild in Charleston, SC, Features Works by Rebecca Croft

The Charleston Artist Guild in Charleston, SC, will present *Low Country Impressions*, showcases a collection of oil paintings by Rebecca Croft, on view in the Guild Gallery, from Oct. 1 - 31, 2024. A reception will be held on Oct. 4, from 5-8pm.

Rebecca Croft brings over 25 years of artistic experience to her latest exhibit. Having lived in diverse locations across the globe, from Germany to California, Croft now calls Charleston, SC, her home. Her work is deeply inspired by landscapes, which she brings to life with vibrant colors and an impressionist touch. For Croft, painting is more than just a creative process—it is an escape into a world of imagination, where the outside world fades away, leaving only the canvas and the possibilities it holds.

Join us for an inspiring evening at the artist's reception on Friday, Oct. 4, from 5-8pm at the Charleston Artist Guild Gallery, located on East Bay Street, Charleston, SC. Enjoy some refreshments and take the opportunity to chat with Croft about her



Work by Rebecca Croft creative process and what she might be working on next.

For further information check our SC Institutional Gallery listings or call Steve Jacobs at 843/722-2454.

City of North Charleston, SC, Features Works by Kristy Bishop and Anne T. Nielsen

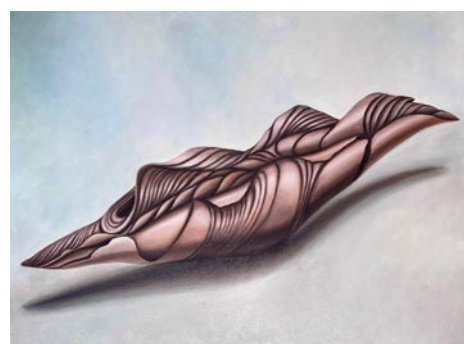
The City of North Charleston's Cultural Arts Department is pleased to announce that woven fiber works by Kristy Bishop (Charleston, SC) and oil paintings by Anne T. Nielsen (Appling, GA) will be on display at Park Circle Gallery from Oct. 2-26, 2024. A reception will be held on Oct. 4, from 5-7pm.

In her exhibit, *MetaWeaves*, Charleston-based textile artist Kristy Bishop features a collection of fiber works that draw inspiration from the rich history of tablet weaving. Bishop's work is an engagement with ancient practice and traditional techniques that were once commonly used to adorn clothing. "By delving into the historical roots of weaving, I honors the craft's heritage while infusing it with contemporary vision and freedom," she explains. Bishop meticulously weaves a series of bands with unique patterns and color using inkle, rigid heddle, and tablet weaving, and then interweaves those bands into ever growing compositions. The interwoven masses grow and evolve, split and stretch. Guided by the color and pattern relationships within each band, new pathways materialize, creating a visual tapestry that tells its own story.



Work by Kristy Bishop

Bishop is multidisciplinary artist and teaching artist whose work is rooted in weaving and textiles. Her fiber pieces have been featured in group and solo exhibitions throughout the southeast, as well as California, Texas, and Illinois. She has been an artist-in-residence at the Gibbes Museum of Art, 701 Center for Contemporary Art, Page 6 - Carolina Arts, October 2024



Work by Anne T. Nielsen

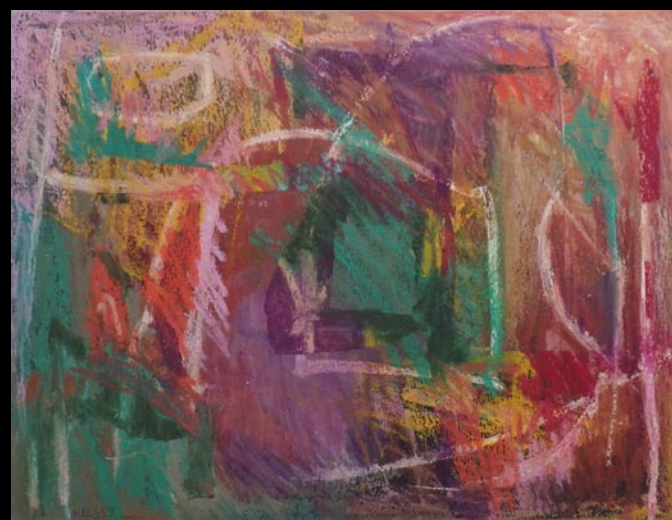
and City of North Charleston Cultural Arts Department, and travels regularly for artist residencies in public schools all over South Carolina. Kristy partners with Engaging Creative Minds, the Charleston Museum, McClellanville Arts Council, and the Gibbes Museum of Art to facilitate workshops.

Dreams and Visions features a mesmerizing collection of Anne T. Nielsen's latest oil paintings. Each piece is a vivid exploration of the symbolism that emerged from her dreams and visions. "I have a creative thought or question, while awake, then usually, in my dreams, the images come fully complete," Nielsen explains. "I wake up, roll off the bed and with my pencil, post cards, and my flashlight, I draw down the idea with notes on colors, textures, and even deeper psychological meanings. I then mix old master information and techniques with abstract marks to portray the image, to be brought to fruition." Nielsen's paintings invite viewers to delve into a world where subconscious imagery transforms into profound visual narratives, offering an ultimate journey through the ethereal landscapes of her imagination.

An artist with an education in psychology, Nielsen brings a wide range of experience and deep meaning to her art. She has always been creative, and started as a self-taught metal artist, before volunteering as theater art director and painter of full stage backdrops. Desiring to expand her understanding and knowledge of painting techniques, she studied old master style portraiture, still life, plein aire, and

continued on Page 8

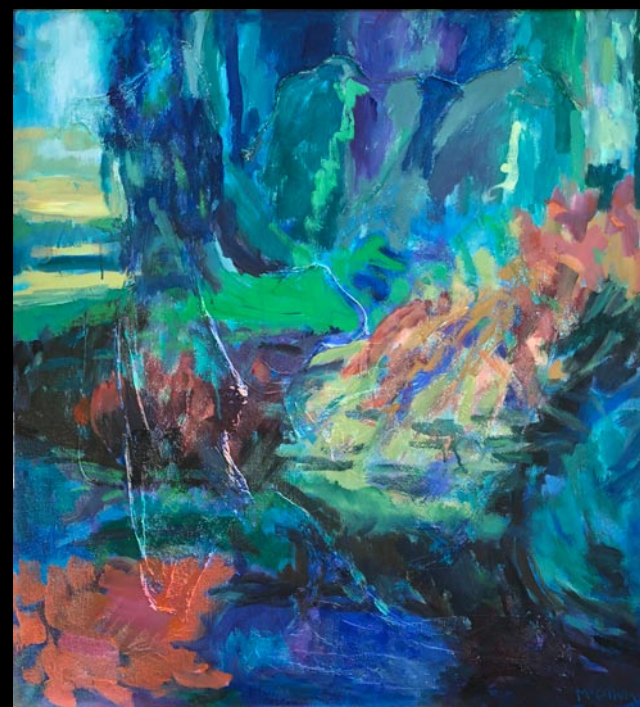
Halsey - McCallum Studio William Halsey & Corrie McCallum



Growing by William Halsey, 1992
oil pastel and paint stick on paper, 18 x 24 inches

Paintings
Graphics
& Sculpture for
the discerning
collector

Both artists are
recipients
of the
Elizabeth O'Neill
Verner Award



Painting by Corrie McCallum

For information: David Halsey • 843.813.7542 • dhalsey@mac.com

31ST ANNUAL CAROLINA RENAISSANCE FESTIVAL & ARTISAN MARKETPLACE

HUZZAH

EIGHT FESTIVE WEEKENDS • OCTOBER 5-NOVEMBER 24
SATURDAYS & SUNDAYS • 9:30AM-5:30PM • ARRIVE EARLY

FALCONRY

MERMAIDS

MUSIC

COMEDY

FEASTING

ARTISANS

GAMES & RIDES

SCAN TO
BUY TICKETS!

BUY TICKETS ONLY ONLINE AT CAROLINA.RENFESTINFO.COM
DIRECTIONS & FESTIVAL INFORMATION • 704-896-5555