

# NC Institutional Galleries

continued from Page 53

can play music on these objects because of Marclay's simple but irreversible modifications. Colin Quashie and Sanford Biggers also use found objects, combining them with absurdist humor to raise serious questions of identity and history. These inscrutable objects are filled with subtle social commentary to question how we perceive the world around us. **Through Jan. 12, 2025** - "Processing Systems: Numbers by Sherrill Roland". The exhibition features artworks, works in progress, and research materials by Sherrill Roland (b. 1984, Asheville, NC) from his ongoing exploration of the criminal justice system. The works are part of a cross-disciplinary project that critically examines United States Federal and State Correctional Identification Numbers, which are assigned to inmates upon incarceration and historically have been used to reduce individuals to a series of digits. Roland, who was wrongfully incarcerated in 2013, uses this numeric system to generate artworks that follow specific rules, like the sudoku puzzles that helped him pass time while he was in prison. **Through July 15, 2025** - "Art of the Andes". Art of the Andes features ceramics, textiles, metalwork, and carvings produced by cultures across the Andes region, a 4,500-mile-long mountain range on the Pacific Coast of South America. These objects, many on view for the first time, reveal the diverse and sophisticated artmaking techniques through which ancient Andeans expressed ancestral beliefs and personal and political identities. The wall case provides a comparative view of the ceramic production of several prominent Peruvian civilizations, presented chronologically from left to right. From the colorful painted motifs of the Nasca and the sculptural realism of the Moche to the whistling vessels of the Chanca, the ceramics depict both realistic and stylized animals, people, deities, food, and scenes of warfare, performance, and pleasure. **Through July 20, 2025** - "Art of the U.S.: American Stories/American Myths." What comes to mind when you think of the history of the United States? The "discovery" of the continent by European explorers? The American Revolution and founding of the country? Westward expansion, or perhaps the turmoil of the Civil War? This re-installed gallery incorporates historical and contemporary works of art from the United States to tell some of these stories and confront some of these myths. The gallery includes a variety of works to encourage visitors to think about how these narratives shape our understanding and may preserve or counter fallacies of nationhood and democracy. **Ongoing** - The Collection Galleries feature rotating installations of the Nasher Museum's extensive holdings of historical art. Eight galleries, as well as the entrance to Wilson Pavilion, are dedicated to the museum's strengths, which represent a brief history of human creativity from different times and parts of the world. Just beyond the entrance, visitors will find the Incubator, a flexible space for rotating student- and faculty-curated exhibitions. Visitors are invited to return again and again to The Collection Galleries, where Nasher curators continue to refresh the galleries with gems from the collection. The museum's contemporary collection is showcased through rotating exhibitions within a separate pavilion. Works from the contemporary collection create new conversations and connections among historical works in The Collection Galleries. A breakthrough work by New York artist Fred Wilson from 1990, Colonial Collection, anchors the Arts of Africa Gallery. A painting by Kehinde Wiley is on view in the European Art Gallery. **Ongoing** - Nasher Museum Café and Museum Shop. Admission: Yes, but free to Durham residents, courtesy of "The Herald-Sun" newspaper. Hours: Tue.- Sat., 10am-5pm; Thur. till 9pm; & Sun., noon-5pm. Contact: 919/684-5135 or at ([www.nasher.duke.edu](http://www.nasher.duke.edu)).

## Edenton

**Chowan Arts Council/Your Community Arts Center**, 504 S. Broad, Edenton. **Ongoing** - The Gallery features art from North East NC artists as well as some from within a 5 hour driving radius. You will find our beautiful waterfront location a pleasant destination as well as the fine art that hangs within our walls. Stained glass, pottery, photography, fiber arts, and painting in various media. We have metal art by Jonathan Bowling and Woodrow Slade, various forms of art by Christine Henninger, oils by Jane Perry, wood art by several local artist. You will find your visit to Edenton enjoyable and the Gallery a delight to your artist senses. Hours: Mon.-Fri., 10am-5pm & Sat., 11am-4pm. Contact: 252/482-8005 or at ([www.chowanarts.com](http://www.chowanarts.com)).

## Elizabeth City

**Arts of the Albemarle**, a regional arts partner serving Pasquotank, Camden and Gates Counties of NC, The Center, 516 East Main Street, (corner of Main & Poindexter Streets), Elizabeth City. **Ongoing** - The Jaquelin Jenkins Gallery and The 516 Gallery, are home to over 250 artists, craftsmen, photographers, potters, fiber artists and jewelers. The AofA at "The Center" hosts solo and shared exhibits once a month followed by opening receptions during Downtown Elizabeth City's First Friday ArtWalk each month, as well as workshops with some of our exhibiting and visiting artists. These workshops are open to members and non-members. Admission: Free. Hours: Mon.-Sat., 10am-5pm. Contact: Katie Murray, Executive Director ([kmurray@artsaoa.com](mailto:kmurray@artsaoa.com)) or Barbara Putnam, Gallery Manager ([bputnam@artsaoa.com](mailto:bputnam@artsaoa.com)). Both can be reached at 252/338-6455 or at ([www.artsaoa.com](http://www.artsaoa.com)).

## Fayetteville



Work by Angela Stout

**Cape Fear Studios, Inc.**, 148-1 Maxwell Street, Fayetteville. **Through Jan.7** - "Annual Holiday Members' Show." Our gallery will showcase the artwork of our local artist members, including painting, mixed media, photography, pottery, jewelry, stained glass, woodworking and metalworking. **Ongoing** - New Gallery exhibit every 4th Friday of the month. We are a nonprofit cooperative of 30 local artist (always looking for new members) creating 2D & 3D art. Our Gallery displays exhibits of visiting artist's work as well as our own exhibits with individual studios where member artists create fantastic works of art onsite. The Gallery show is free of charge and the public is welcome to watch the artists at work. Group and individual classes in a variety of media are ongoing. Reg. Hours: Mon.-Fri., 11am-5pm & Sat., 10am-4pm. Contact: 910/433-2986, e-mail to ([capefearstudios@capefearstudios.com](mailto:capefearstudios@capefearstudios.com)) or at ([www.capefearstudios.com](http://www.capefearstudios.com)).



Work by Aghdas Mohammadkahn

**Ellington-White Contemporary Gallery**, 113 Gillespie Street, Fayetteville. **Through Dec. 21** - Artist Who Teach 2024, juried by Vickie Rhoda, Artist, Professor of Art Education, Fayetteville State University and Dwight Smith, Artist, MFA, Associate Professor of Visual Arts, Fayetteville State University and Founder Ellington-White Contemporary. As part of our ongoing commitment to promote the visual arts, Ellington-White Contemporary Gallery (EWCG) in collaboration with Fayetteville State University (FSU), invited current and former Visual Art Education Professionals to submit entries for this national juried exhibition to showcase the arts as an essential part of a complete education, no matter if it happens in the home, school, or community. National studies show that students of all ages—from kindergarten to college to creative aging programs—benefit from artistic exposure, learning, innovative thinking, and creativity. Celebrating

Arts in Education with this national virtual event is a way to recognize and promote the impact of visual arts and share the message that "The Arts Matter." **Ongoing** - A visual arts venue for emerging and professional artists with exhibitions of original art and events that reflect and respond to cultural arts diversity. Hours: Wed.-Sat., 11am-4pm. Contact: 910/483-1388 or at (<http://www.ellington-white.com>).

**Rosenthal Gallery**, 1200 Murchison Road, Fayetteville State University, Fayetteville. **Through Dec. 6** - "Phantasmagoria: FSU Art Department Senior Showcase". Hours: Mon.-Fri., 9am-5pm. Contact: 910/630-7107.

**The Arts Center**, Arts Council of Fayetteville/Cumberland County, 301 Hay Street, Fayetteville. **Main Gallery, Dec. 6 - Jan. 10, 2025** - "The Whimsical Naturalist: NC Flora and Fauna by Katie Crawford". A reception will be held on Dec 6, from 6-8pm. This exhibition combines whimsical narrative portraits with scientific discovery. Each watercolor portrait is a native North Carolina animal paired with a native plant found in that animal's environment. Each species is rendered with identifying characteristics as well as expressive character development. "The Whimsical Naturalist" is an engaging world that people can step into! A world where nature's wonders and realities are emphasized through anthropomorphism, shifting perspectives and scientific knowledge. I hope people will walk in, smile, learn and leave thinking about how we are connected to our environment and each other. Hours: Mon., 10am-2pm; Tue., 11am-2pm and Wed.-Thur., 10am-2pm. Contact: 910/323-1776 or at (<https://www.theartscouncil.com/>).

**The Art Gallery @ FTCC**, 2817 Fort Bragg Road, FTCC, General Classroom Building (GCB) 221, Fayetteville Technical Community College, Fayetteville. **Ongoing** - The Art Gallery at FTCC displays exhibitions each semester that feature the artwork of students, faculty, and outside artists. Exhibitions are free and open to the public to enjoy. Hours: call for hours or connection to virtual exhibit. Contact: Dennis Johnson, Dept. Chair, by e-mail at ([johnsoden@faytechcc.edu](mailto:johnsoden@faytechcc.edu)) or call 910/678-0092.

**The Museum of the Cape Fear Historical Complex**, 801 Arsenal Avenue, Fayetteville. **Ongoing** - The museum operates under the Division of State History Museums, Office of Archives and History, within the North Carolina Department of Natural and Cultural Resources. Admission: Free. Hours: Tue.-Sat., 10am-5pm & Sun., 1-5pm. Contact: 910/500-4240 or at (<https://museumofthecapefear.ncdcr.gov/>).

## Frisco

**Frisco Native American Museum**, 53536 North Carolina Hwy 12, Frisco. **Ongoing** - The museum contains a nationally recognized collection of Native American artifacts, exhibits and natural history displays. Galleries filled with native art include information on Native Americans across the United States, as well as artifacts from the first inhabitants of Hatteras Island. Designated as a North Carolina Environmental Education Center and a Historic Albemarle Tour site, the museum also includes several acres of nature trails winding through a lush maritime forest. Admission: Yes. Hours: Tue.-Sun., 10:30-5pm or by appt. (off season: Sat. & Sun. only). Contact: 252/995-4440 or at ([nativeamericanmuseum.org](http://nativeamericanmuseum.org)).

## Fuquay-Varina

**Fuquay-Varina Arts Center**, 123 E. Vance Street, Fuquay-Varina. **Ongoing** - The Art Center contains a theater, art gallery, classrooms and dance studio. Gallery exhibits generally will change every six to seven weeks. Hours: Mon.-Fri., 9am-5pm & Sat., 10am-5pm. Contact: 919/567-3920 or at ([fvarts.org](http://fvarts.org)).

## Goldsboro

**Arts Council of Wayne County**, 139 W. Walnut Street, Goldsboro. **Ongoing** - We represent local and regional artists in our Youth and Main Galleries, Art Market, and off-site Artist Studios. Hours: Tue.-Fri., 10am-6pm & Sat., noon-6pm. Contact: 919/947-0009 or at ([artsinwayne.org](http://artsinwayne.org)).

## Greensboro Area

**Open Air Market**, corner of South Elm & MLK in downtown Greensboro. **First Fri. of every month, 4-9pm** - "Indie Market," a place where local artists and crafts people can come together to offer handmade and vintage goods.

**African American Atelier & Bennett College for Women Gallery**, Greensboro Cultural Center, 200 N. Davie Street, Greensboro. **Ongoing** - Featuring works by local, regional and national African American artists. Hours: Tue.-Sat., 10am-5pm; Wed., till 7pm & Sun., 2-5pm. Contact: 336/333-6885.



Work by Kaidy Lewis

**GreenHill**, a space for NC art, 200 North Davie Street, Greensboro Cultural Center, Greensboro. **Dec. 11 - Feb. 15, 2025** - "Winter Show". GreenHill's annual "Winter Show" brings together over 70 artists each year from across North Carolina and constitutes an up-to-the-moment overview of the finest art and craft produced by artists in the state. Painting, sculpture, photography, ceramics, jewelry, woodwork, and fiber art are all displayed in a harmonious installation. Artists vary not only by medium, but also by experience, background and style, with an average of 40 new artists presented each year. This year, GreenHill's First Choice will be held on Dec. 5th, from 5:30-7:30pm, Collectors Choice will be held on Dec. 7th from 7-10pm, and the Public Opening will be held on Dec. 11, 2024 starting at 5:30pm. Hours: Wed., noon-7pm; Tue., Thur. & Fri., noon-5pm; and Sat., 10am-5pm. Contact: 336/333-7460 or at ([www.greenhillnc.org](http://www.greenhillnc.org)).

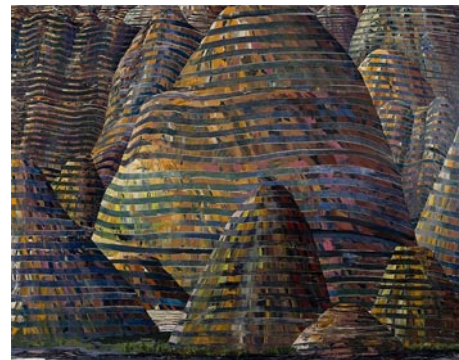
**Guilford College Art Gallery**, Hege Library, Guilford College, 5800 W. Friendly Ave., Greensboro. **Ongoing** - Other galleries located throughout Hege Library display rotating objects from the College's permanent collection. Hours: Mon.-Fri., 9am-5pm & Sun., 2-5pm, also closed during College holidays. Contact: call Theresa Hammond at 336/316-2438 or e-mail to ([thammond@guilford.edu](mailto:thammond@guilford.edu)).

**Guilford Native American Art Gallery**, Greensboro Cultural Center, 200 N. Davie St., Greensboro. **Ongoing** - Featuring works by Carolina's Native Americans. Hours: Tue.-Sat., 10am-5:30pm. Contact: 336/273-6605.

**NC A&T State University Galleries**, 1601 E. Market Street, Dudley Building, NC A&T State University, Greensboro. **Ongoing** - The Matye Reed African Heritage Collection seeks to educate people about the culture, history and accomplishments of African societies and peoples of African descent. It achieves this through the development of exhibits drawn from its extensive collection of African artifacts, which represent a cross-section of African cultures from over thirty-five countries. The collection is made up of fine examples of African material culture including sculptures, masks, figures, household implements, musical instruments, and textiles. The modern collection includes works from Nigeria, Ghana, Ethiopia, Haiti and elsewhere in the African Diaspora. Hours: Tue.-Fri., 10am-5pm & sat., 1-5pm. Contact: 336/334-3209.

**Revolution Mill**, 1250 Revolution Mill Drive, Greensboro. **Gallery 1250, Ongoing** - "Triple Visions: works by Jan Lukens, Michael Northuis and Roy Nydorf." Hours: Mon.-Fri., 11am-6pm, select evening + weekend hours. Contact: ([www.janlukens.com](http://www.janlukens.com)).

**The Center for Visual Artists Greensboro**, second floor of the Cultural Arts Center, 200 North Davie St., Greensboro. **Now** - View the online gallery at this link (<https://www.greensboroart.org/online-gallery-new>). **Ongoing** - Featuring works by member artists from throughout the greater Greensboro area. Hours: Tue.-Sat., 10am-5pm; Weds. till 7pm; & Sun., 2-5pm. Contact: 336/333-7485 or at ([www.greensboroart.org](http://www.greensboroart.org)).



Maud Gatewood, "The Bundles from the Creek Bed," 1996. Acrylic on canvas, 60 x 72 in. Bequest of Maud F. Gatewood, 2004, 2006.21.5

**Weatherspoon Art Museum**, University of North Carolina - Greensboro, Cone Building, Tate and Spring Garden Streets, Greensboro. **Louise D. and Herbert S. Falk, Sr. Gallery, Through Dec. 21** - "Interpreting America: Photographs from the Collection". Drawn from the Weatherspoon's stellar collection, these photographs illustrate what artists have had to say about American culture from the late 19th- to the early twenty-

continued on Page 55