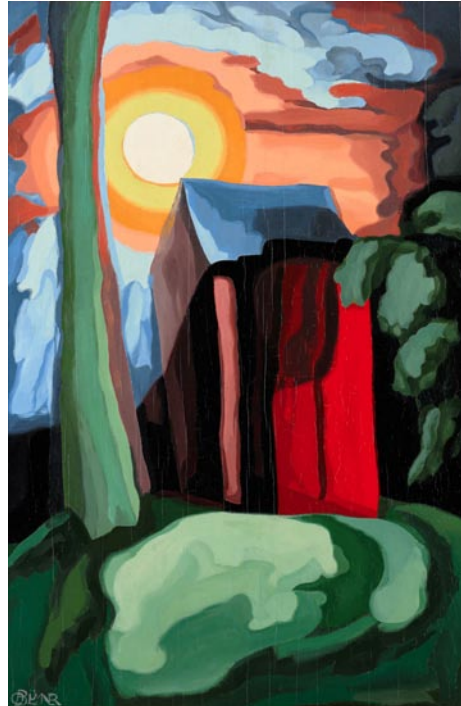


NC Institutional Galleries

continued from Page 59

Piedmont Craftsmen Gallery, 601 North Trade Street, Winston-Salem. **Ongoing** - Featuring fine art crafts by over 350 of the best artisans of the Southeast. Hours: Tue.-Fri., 10:30am-5pm & Sat., 11am-4pm. Contact: 336/725-1516 or at (www.piedmontcraftsmen.org).

Red Dog Gallery/Art for Arts Sake (AFAS), 630 N. Liberty Street, Winston-Salem. **Ongoing** - We initiate and/or support a wide variety of special events and programs - all free to the public - that are designed to further the creation and enjoyment of art at the local level. In addition, through student scholarships and artist mentoring, we encourage the development of new and emerging artists throughout the community. Hours: Tue.-Fri., noon-6pm & Sat., 11am-4pm. Contact: 336/723-4444 or at (www.theafasgroup.com).



Oscar Bluemner (1867-1938) "Moonshine Fantasy"

Reynolda House Museum of American Art, Reynolda Road, Winston-Salem. **Mary and Charlie Babcock Wing Gallery, Through Dec. 5** - "Founder's Vision: The Private Collection of Barbara Babcock Millhouse". The exhibition features works of art from the personal collection of the founder of Reynolda House Museum of American Art. Audiences will have a unique opportunity to view more than 50 objects reflecting the best of American modernism from artists including Romare Bearden, Alex Katz, Edward Hopper, Joseph Cornell, Georgia O'Keeffe and John Singer Sargent among 40 other artists from the late 19th and 20th centuries—all under one roof. "The 'Founder's Vision' exhibition traces the entire arc of modernism in America," said Phil Archer, the Betsy Main Babcock Deputy Director at Reynolda and the exhibition's curator. **Master Bedroom Gallery, Through Dec. 31** - "Still I Rise: The Black Experience at Reynolda". "Into a daybreak that's wondrously clear / I rise." Maya Angelou's poem "Still I Rise," published in 1978, was an assertion of dignity and resilience in the face of oppression. In the 1980s, Angelou used Reynolda as her stage, sharing words of humanity, survival, and triumph. But before her, numerous Black lives impacted and intersected with the story of Reynolda. "Still I Rise: The Black Experience at Reynolda" examines the lives of the Black women and men who helped shape Reynolda as it evolved from a Jim Crow era working estate into a museum for American art. **East Bedroom Sleeping Porch, Ongoing** - Featuring a condensed version of the fall 2023 exhibition "Smith & Libby: Two Rings, Seven Months, One Bullet". This semi-permanent exhibition presents a fascinating look at an unsolved shooting that rocked the Reynolda estate and made national headlines in 1932. Like most family homes, Reynolda House witnessed its share of tragedies, none more shocking than the death by gunshot of Zachary Smith ("Smith") Reynolds, youngest child of R.J. and Katharine Smith Reynolds. Soon after midnight on July 6, 1932, Smith was shot on

a sleeping porch at the family's country estate. Smith died later that morning. Smith's wife Libby Holman and Smith's childhood friend and secretary Albert "Ab" Walker were ultimately charged with first-degree murder. In a stunning reversal, the case was dropped before coming to trial. To this day, it is not known whether Smith Reynolds, 20-year-old heir and renowned aviator, died by suicide, accident or murder. **Ongoing** - Collection of 18th through 20th century art, sculpture, American art, and pottery. Admission: Yes. Hours: Tue.-Sat., 9:30am-4:30pm & Sun., 1:30-4:30pm. Contact: 336/725-5325 or at (<https://reynolda.org/>).



View from a previous Holiday Market at the Sawtooth School for Visual Arts

Sawtooth School For Visual Arts, Milton Rhodes Center For The Arts, 251 N. Spruce St., Winston-Salem. **Through Feb. 1, 2025** - "2024's Juried Exhibition". Within the Juried Exhibition, you will find original, high-quality works by various regional artists, many of whom are Sawtooth students and instructors. Our Spotlight exhibition inspires pride and support for the talented, dedicated, cross-disciplinary Piedmont Triad community of artists. Most of the works will be available for purchase throughout the show. The exhibition is free and open to the public. **Dec. 7, from 11am-4pm** - "2024 Holiday Market". Our Holiday Market transforms the Milton Rhodes Center for the Arts, filling the halls, studios, theater, and galleries with artist vendors, hands-on activities, craft demonstrations, food trucks, and fun for the whole family! Artists from across the region will offer a variety of handcrafted items, including ceramics, jewelry, textiles, painting, photography, and woodworking, making it easy to find something for everyone on your list. Hours: Mon.-Fri., 10am-5pm & Sat., 10am-2pm. Contact: 336/723-7395 or e-mail at (www.sawtooth.org).

SEED Collective Gallery, 205 W. Sixth Street, entrance is on "Soho Alley", Winston-Salem. **Ongoing** - Featuring works by a cooperative group of artists in various mediums. Hours: Sat. from 11am-5pm & by appt. Contact: 336/722-2345.

Unleashed Arts Center, 630 North Liberty Street, Winston-Salem. **Ongoing** - The Center is a special initiative by The AFAS Group to foster an appreciation of art and to encourage the development of emerging artists. The center provides a venue for art shows, seminars, artist demonstrations and includes working artists studios. Hours: Tue.- Fri., noon-6pm and Sat., 11am-4pm. Contact: 336/413-6667 or at (www.theafasgroup.com).

Yadkinville

Yadkin Cultural Arts Center, 226 E. Main Street, Yadkinville. **Welborn Gallery and Red Wall Gallery, Through Dec. 20** - "ArtMe: Yadkin Arts Council Artist Member Showcase", featuring a variety of mediums by the Yadkin Arts Council Artist Member group. Hours: Mon.-Fri., 9:30am-4:30pm. Contact: 336/679-2941 or at (<https://www.yadkinarts.org/>).

Virtual Exhibits

Artsville Collective in the Asheville, NC, area proudly presents the Virtual Gallery of Artists (VGA) program, an initiative designed to help elevate the careers of local artists. VGA offers artists a unique opportunity to gain global exposure, valuable marketing skills, and an array of promotional resources. The VGA program invites individual artists to apply for three months of marketing exposure through print, digital, and podcast platforms. Artsville provides guidance

on building relationships with the press and art buyers, empowering artists by coming alongside them and forming connections. Notably, Artsville does not take any commissions on art sales, ensuring artists keep their full earnings. For further information about Artsville programs and opportunities, contact Meredith McBride by e-mail at (mccoy.louisemcb@gmail.com), call 828/216-8050 or visit (<https://www.artsvilleusa.com/>).

Waxing Phoenix Virtual Gallery, featuring works by Robyn Albeke. Check it out at (waxingphoenixgallery.com).

Aberdeen

Artistic Impressions, 103 North Poplar Street, Aberdeen. **Ongoing** - Featuring custom stained glass, glass etching, repairs, restoration and church windows, plus a full supply for the hobbyist. Hours: Mon.-Fri., 9am-5pm & Sat., 10am-2pm. Contact: 910/944-1930.

Seagrove Pottery of the Sandhills, 1680 NC Highway 5, less than 2 miles from the Village of Pinehurst in the Food Lion/Bowling Alley Plaza, Aberdeen. **Ongoing** - Featuring only NC potters and primarily those of Seagrove, NC. We typically have over 1000 pieces from 25 pottery artist's on display. Hours: Mon.-Sat., 10am-5pm. Contact: 910/420-8056 or at (www.pinehurstpottery.com).

Apex

Cocoon Gallery, 221 N. Salem Street, #100, Apex. **Ongoing** - Opening in April 2017, owner Cynthia Mollenkopf has created a gallery of locally imagined & locally crafted, high quality, functional artwork featuring 70+ North Carolina artisans. Mediums included Ceramics, Wood, Jewelry, Glass, Textiles, Metal, & Books. Throughout the year, there are opportunities to meet artists & authors, see demonstrations, take classes, and experience other in house & community events. Hours: Mon.-Wed., 11am-6pm; Thur. & Fri., 11am-7pm; Sat., 11am-6pm; and Sun., noon-5pm. Contact: 919/267-4321 or at (cocoongallerync.com).

Asheville

Downtown Asheville, Dec. 6, 5-8pm - "Downtown Art Walks," presented by the 25 members of the Asheville Downtown Gallery Association. Pick up a Downtown Gallery Guide with a map to help you along the way at any downtown gallery, the Chamber of Commerce, or Pack Place. Contact: 828/258-0710, ext. 108 or at (www.asheville-downtowngalleries.org).

River Arts District, Asheville. Ongoing - The River Arts District is minutes from Downtown Asheville and The Biltmore Estate. After a period of recovery from Hurricane Helene, which will take longer for some than others. But don't count these folks out and don't forget about them. Some are back to normal - they're open for business. Many still have websites where you can help by buying their work or making donations. For further info visit (www.riverarts-district.com).

Aesthetic Gallery, 6 College St., across from Pritchard Park, Asheville. **Ongoing** - Offering a variety of international works, including terracotta ceramics from Viet Nam and stone sculpture from Zimbabwe. In addition, there is an assortment of intricately detailed handcrafted pictorial textiles from Australia and Lesotho, many of which depict local Asheville scenes. Also available are Australian Aboriginal oil paintings, Bruni Sablan oil paintings from the "Jazz Masters Series," and ceramic tiles from the Southwest (US). Hours: Tue-Sat, noon-6pm. Contact: 828/301-0391 or at (www.aestheticgallery.com).



Works by Carl Block

American Folk Art & Antiques, 64 Biltmore Ave., Asheville. **Ongoing** - Featuring antique folk art, functional and contemporary folk pottery, furniture and paintings. Hours: Mon.-Sat., 10am-6pm & Sun., noon-5pm. Contact: 828/281-2134 or at (www.amerifolk.com).

Appalachian Craft Center, 10 North Spruce St., Asheville. **Ongoing** - Folk pottery, face jugs, traditional crafts, and other collectables. Hours:

Mon.-Sat., 10am-5pm. Contact: 828/253-8499 or at (www.appalachiancraftcenter.com).

Ariel Gallery, 19 Biltmore Ave., Asheville. **Ongoing** - Presenting the best in clay, fiber, paper, books, jewelry, metal, sculpture, furniture and glass by members of the Ariel Contemporary Craft Cooperative. A gallery owned and operated by artists. Hours: Tue.-Thur., 10am-6pm; Fri. & Sat., 10am-7pm and Sun., 1-5pm. Contact: 828/236-2660 or at (www.arielcraftgallery.com).

Art Garden AVL, Riverview Station, 191 Lyman Street, #316 + #320, River Arts District, Asheville. **Ongoing** - Art Garden is an art gallery & plant shop, but really, it is an ever-evolving container for the imagination to run wild; created to be a fertile ground for wonder, creativity, growth & joy; crafted as a platform to gather & uplift. Art Garden is home to the creations of over 50 Asheville area artists, and is operated by a core of studio artists who will find welcoming you in each day and whose working studios you are welcome to explore! Hours: daily from 11am-5pm. Contact: 828/505-7553 or at (<https://www.artgardenavl.com/>).

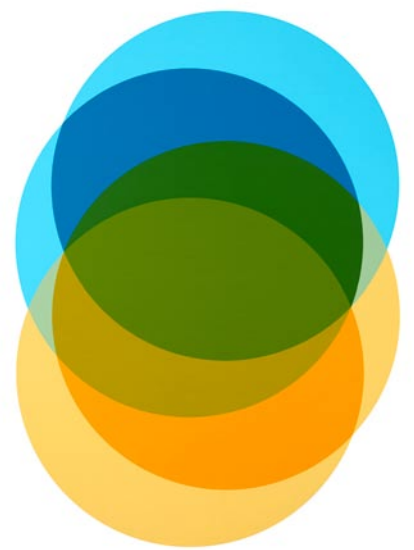
ArtEtude Gallery, 89 Patton Avenue, Asheville. **Ongoing** - Featuring compelling contemporary art, by talented artists, for discerning collectors. Hours: Mon.-Thur., 10am-6pm; Fri.-Sat., 10am-7pm; & Sun. noon-5pm. Contact: 828/252-1466 or at (<http://artetudegallery.sqsp.com/>).

ArtPlay Studio & Gallery, 372 Depot Street, #44, River Arts District, Asheville. **Ongoing** - ArtPlay has now become a beautiful full gallery space featuring women artists, each contributing their own unique works of art and creative gifts to who we are. We've evolved into a regular place for community members to gather, share creative experiences through our classes and dive into their own learning, creative expressions and risk-taking. A space where people take leaps of faith to put their own art in our Community Exhibitions for the first time, and emerging young artists do the same. Hours: Mon., 11am-5pm; Thur.-Sat., 11am-5pm; & Sat., noon-5pm. Contact: e-mail at (info@artplay-studio.com).

ARTSVILLE Collective, at Marquee, 36 Foundry in the RAD, Asheville. **Ongoing** - ARTSVILLE Collective falls under the umbrella of Sand Hill Artists Collective (SHAC) in partnership with Crewest Studio/LA. They show, tell and talk about creativity at this new gallery and gathering space at Marquee in the RAD. SHAC's bi-weekly blog news and stories, a new podcast series on art in Asheville, art discussions and events are available by signing up at (sandhillartists.com). Hours: Thur.-Tue., 10am-5pm. Contact: (sandhillartists.com).

Bellagio, 5 Biltmore Plaza, Historic Biltmore Village, Asheville. **Ongoing** - Featuring exquisitely handcrafted jewelry and clothing. Hours: Mon.-Sat., 10am-6pm & Sun., noon-5pm. Contact: 828/277-8100 or at (www.bellagioarttowear.com).

Bella Vista Art Gallery, 14 Lodge St., Historic Biltmore Village, Asheville. **Ongoing** - Featuring works by regional and national artists in a variety of mediums. Offering contemporary oil paintings, blown glass, pottery, black & white photography, stoneware sculptures, and jewelry. Hours: Mon.-Sat., 10am-6pm & Sun., 10am-4pm. Contact: 828/768-0246 or at (www.BellaVistaArt.com).



Work by Angela Johal

Bender Gallery, 29 Biltmore Avenue,, Asheville. **Dec. 1 - 22** - "California Minimalism: Transformative Paintings by Angela Johal. Bender Gallery is pleased to present a solo exhibition of paintings delving into themes of time and light by widely exhibited and prolific artist, Angela Johal. Her work is inspired by growing up in the San Francisco Bay Area in the 1960s and 70s and the California Minimalism Movement of the same period. Johal's exhibition opens on December 1 and runs through December 22, 2024. Johal is a savvy disciple of the hard-edge geometric painters of the 1960s,

continued on Page 61

NC Commercial Galleries

Editor's Note: I wish I could tell you that everything listed here is open or every event would happen, but we just don't know for sure and I don't blame any of the presenters if we were the last thing on their minds while dealing with this current disaster. My best advise to you is call before you go to visit someplace or go to see an exhibit listed. That's mostly for the areas hit by Hurricane Helene, in this case, Western NC.