

# SC Institutional Galleries

continued from Page 27

textiles, sculpture, photography, video, ceramics, assemblage, collage and more. A visit to the Art Museum's exhibitions can be enhanced by its lively programming, including artist receptions, tours, lectures, workshops and classes for both adults and children. Hours: Tue.-Sat., 10am-4pm & Sun., 1-4pm. Contact: 843/238-2510 or at ([www.myrtlebeachartmuseum.org](http://www.myrtlebeachartmuseum.org)).

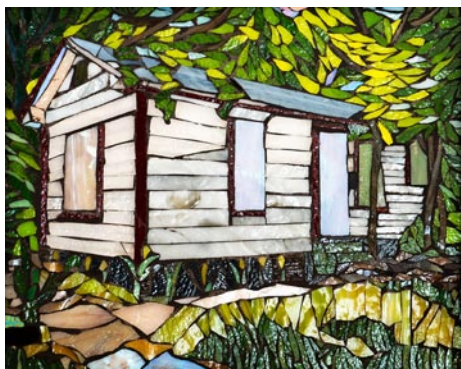
**Seacoast Artists Gallery**, located at The Market Common, 3032 Nevers Street, Myrtle Beach. **Ongoing** - features the works of over 70 local artists of the Seacoast Artists Guild of South Carolina, a nonprofit visual arts organization dedicated to advancing excellence in the visual arts through teaching, exhibits, workshops and special events. Guild membership benefits include monthly meetings, programs & presentations; and opportunities to participate in Spring & Fall Art Shows and Web Gallery. Artwork includes oil, acrylic, watercolor, fiber art, mixed media, clay, metal engraved jewelry, sculpture, assemblage, and fine art photography. Art classes and workshops offered. Hours: Mon.-Sat., 10am-6pm and Sun., noon-6pm. Contact: 843.232.7009, e-mail at ([seacoastartistsgallery@gmail.com](mailto:seacoastartistsgallery@gmail.com)) or at ([seacoastartistsguild.com](http://seacoastartistsguild.com)).

## Newberry



Items offered for sale at Newberry Arts Center **Newberry Arts Center**, 1200 Main Street location, Newberry. **Ongoing** - The Newberry Arts Center was established in 2014 and is operated by the City's Parks, Recreation and Tourism Department. In less than a year a solid arts program was established that includes programs for all ages. The mission of the Newberry Arts Center (NAC) and Newberry Arts Program is to provide quality arts experiences to all interested citizens and increase support for working artists while creating appreciative current and future art patrons by involving the diverse population and fostering local economic growth while enhancing the quality of life for all residents. The NAC also established and hosted the first ever South Carolina Clay Conference, an annual conference for clay enthusiasts held in Newberry each year. Hours: Call for hours. Contact: 803/597-1125 or at ([www.NewberryArtsCenter.com](http://www.NewberryArtsCenter.com)).

## North Charleston



Work by Elizabeth Kalman

**Park Circle Gallery**, formerly the Olde Village Community Building, 4820 Jenkins Avenue, in the bustling Park Circle neighborhood of North Charleston. **Jan. 2 - Feb. 1** - "In Spaces: In Spaces," North Charleston based PhD student and artist Ella Kokinda presents an intimate view of three important spaces in her life, showcased through tufted rugs. A reception will be held on Jan. 3, from 5-7pm. Rather than constraining creativity to a single theme, this exhibition celebrates the rich diversity of inspiration found in her sewing and crafting room, her kitchen, and garden. Through this trilogy of mini exhibitions, Ella explores how artistic practice is not limited to one style, theme, or idea and embraces how every aspect of our lives can be inspiring to make and create. **Jan. 2 - Feb. 1** - Elizabeth Kalman's "Liminal Places: Stories in Glass," is a compilation of mosaic works that are the essence of her life on the edge of Noisette Creek. Kalman has found tremendous creative energy in places that are thresholds, both as essayist and visual artist, and "Liminal Places" is an exploration of the tension she finds in a neighborhood on the edge of revitalization, in the flowers of the pandemic, on the shore, and beyond to the sea. **Ongoing** -

**ing** - In addition to the monthly exhibitions, the "gift shop" at the North Charleston City Gallery, which features a variety of items by local artists, will also be moved to PCG. Cultural Arts will also continue to host art workshops and recurring meetings for art groups and guilds in the space once gatherings are safe to resume. Admission: Free. Hours: Wed.-Fri., 11am-6pm & Sat., noon-4pm. Contact: 843/740-5854, or at (<https://www.northcharleston.org/residents/arts-and-culture/>).

**ALTERNATE ART SPACES** - North Charleston **North Charleston Riverfront Park**, 1001 Everglades Dr., The Navy Yard at Noisette (former Charleston Naval Base), North Charleston. **Through Mar. 16, 2025** - "18th Annual National Outdoor Sculpture 2024/2025 Exhibition, juried by Lauren Nye, Associate Curator at the Hunter Museum of American Art in Chattanooga, TN. Sculpture artists from across the nation were invited to enter their work. Twelve sculptures by artists from 5 different states were juried into the 2024/25 exhibit. Once installed, awards for Best in Show, Outstanding Merit, and Honorable Mentions will be selected by the juror, Lauren Nye. Participating sculptors include: Ann Melanie of Anderson, SC (HONORABLE MENTION); Adam Walls of Hope Mills, NC; Bob Doster of Lancaster, SC; Beau Lyday of Valdese, NC; Carl Billingsley of Ayden, NC; Corrina Sephora of Atlanta, GA; Doug McAbee of Laurens, SC (HONORABLE MENTION); Hanna Jubran of Grimesland, NC (BEST IN SHOW); Joni Younkins-Herzog of Athens, GA (HONORABLE MENTION); Mark Chatterley of Williamston, MI (OUTSTANDING MERIT); and Matthew Newman of Damascus, VA. Organized by the City of North Charleston Cultural Arts Department and presented as a component of the annual North Charleston Arts Fest, this unique exhibition offers established and emerging artists the opportunity to display their inspiring and extraordinary sculptures throughout the picturesque North Charleston Riverfront Park, set along the banks of the Cooper River. An estimated 50,000 people visit this public park annually to enjoy the amenities located in the heart of the city's arts community. Hours: daylight hours. Contact: call 843/740-5854, visit ([NorthCharlestonArtsFest.com](http://NorthCharlestonArtsFest.com)) or at (<https://www.northcharleston.org/residents/arts-and-culture/>).

## Orangeburg

**Cecil Williams Civil Rights Museum**, 1865 Lake Drive, Orangeburg. **Ongoing** - Established in 2019, the exquisite ultra-modern facility displays 1000 images of the Civil Rights Movement, but from the perspective of The Epochal South Carolina Events That Changed America. The massive archives comprise the largest collection of images of this type among all museums in the United States; including the Atlanta based High Museum which archives 300 images. The images were created by the founder, Cecil Williams, who began photography at age 9 and covered almost all historically significant events in South Carolina; from 1950 Briggs v. Elliot in Summerton, thru the 1969 Charleston Hospital Workers' Strike...and Beyond. From 1955 through 1969, Williams was a freelance journalist for "JET" magazine. His images have appeared in thousands of magazines, newspapers, historical publications, and motion picture productions. The museum design itself is part of the founders' DNA because; upon graduating from high school, Williams wanted to attend Clemson University to study architecture but denied because of his race. He then purchased a drafting board and through the years, designed three residences; including one featured in "EBONY", and the museum's design which has evolved into a living history facility. Hours: call ahead for hours. Contact: call 803-531-1662 or at ([www.cecilwilliams.com](http://www.cecilwilliams.com)).

**Lusty Gallery**, Orangeburg County Fine Arts Center, Edisto Memorial Gardens, 649 Riverside Drive, Orangeburg. **Ongoing** - Featuring works by local artists. Hours: Mon.-Thur., 8:30am-4:30pm & Fri., 8:30am-noon. Contact: Vivian Glover at 803-606-7770 or at (<https://orangeburgarts.org/>).

## Pawleys Island, Litchfield & Murrells Inlet

**Brookgreen Gardens**, 1931 Brookgreen Garden Drive, US 17, south of Murrells Inlet. **Through Jan. 5** - "Nights of a Thousand Candles". See Brookgreen Gardens come to life amid the soft glow of more than 2,700 hand-lit candles and millions of sparkling lights. From 4 - 9pm. walk the paths with a warm cup of cider, hear the sounds of holiday music, and celebrate the season with family and friends! For ticket info visit ([www.brookgreen.org](http://www.brookgreen.org)). **Ron Daise Auditorium, Jan. 27 - Mar. 1** - "ArtFields Jr. Traveling Exhibition". Discover the creativity and talent of young artists

at the ArtFields Junior Art Exhibition. This inspiring showcase highlights the imaginative works of students from the Pee Dee region, celebrating their unique perspectives and artistic exploration. From vibrant paintings to innovative mixed media pieces, the exhibition offers a glimpse into the boundless creativity of the next generation of artists. Join us as we nurture and honor youthful expression in the heart of the ArtFields community. The ArtFields Jr. traveling exhibition tours the four regions of South Carolina and showcases the winning artworks from the 2024 ArtFields Jr. Art Competition in addition to area participants. Regional awards will be given out in each of the four areas (Pee Dee, Upstate, Midlands, Lowcountry). **The Stanley and Naomi Bleifeld Gallery, Ongoing** - All the works on view in the Bleifeld Gallery are from the collection of Brookgreen Gardens. The gallery showcases the work of historic and contemporary sculptures whose subjects are taken from the natural world. It includes work by Anna Hyatt Huntington, Gertrude Lathrop, Stanley Bleifeld, Grainger McKoy, Sandy Scott, Kent Ullberg, and numerous other prominent sculptors, past and present. The gallery officially opened in Feb. 2017. **Ongoing** - "Lowcountry: Change and Continuity," a major new exhibit, tells the story of human interaction with this land over the centuries. It features wall size photomurals by SC naturalist photographer Tom Blagden, along with a range of artifacts tracing the history of man's occupation of this extraordinary landscape. **General Gardens, Ongoing** - One of the largest collections of outdoor sculpture in America. This preeminent collection of American representational sculpture includes - 560 works by 240 artists - representing such well-known artists as Charles Parks, Daniel Chester French, Carl Milles, August Saint-Gaudens and Anna Hyatt Huntington. Hours: daily, 9:30am-5pm. Admission: Yes. Admission to Brookgreen is good for seven days. Contact: 843/235-6000, 800-849-1931, or at ([www.brookgreen.org](http://www.brookgreen.org)).

## Richburg

**Olde English District Visitors Center & Market**, 3200 Commerce Drive, Suite A, Richburg. **Ongoing** - This is your one stop shop for finding specialty food products, art (pottery, jewelry, etc.) and many other local, unique items from our region. We also carry a variety of South Carolina souvenirs. Hours: daily, 9am-5pm. Contact: 803/385-6800 or at ([www.oldeenglishmarket.com](http://www.oldeenglishmarket.com)).

## Ridgeland

**Morris Center for Lowcountry Heritage**, 10782 Jacob Smart Blvd. S., on US 17, in a 1937 historic Sinclair Service Station, Ridgeland. **Through Feb. 22** - "Language of Clay: Catawba Indian Pottery and Oral Tradition". This immersive exploration of Catawba pottery, curated by the University of South Carolina Lancaster's Native American Studies Center, promises to captivate audiences with its profound connection to oral traditions. Pottery making is the single most unbroken material tradition of the Catawba Nation's long history and is still done with methods handed down through generations. The "Language of Clay" features dozens of clay pottery pieces created by Catawba artisans from the 19th century to the present that represent various Catawba traditions and legends. **Ongoing** - Morris Center for Lowcountry Heritage hosts exhibitions on local history, art, and culture. We also provide hands-on art workshops throughout the year. Admission: FREE. Hours: Tue.-Sat., from 10am-5pm. Contact: 843/284-9227 or at ([www.MorrisHeritageCenter.org](http://www.MorrisHeritageCenter.org)).

## Ridge Spring

**Art Association of Ridge Spring Gallery**, Art Center in Ridge Spring, located behind the Ridge Spring Civic Center, 108 Maintenance Shop Circle, Ridge Spring. **Ongoing** - The Center contains works in a variety of media by: Ron Buttler, D.S. Owens, Carolyn Boatwright, Betsy Connelly, Kedryn Evans, Jessica Goodman, Melanie Knight, John Zullo, Donna Minor, Joanne Crouch, Gloria Grizzle, Linda Lake, Gwen Power, Deborah Reeves, Marion Webb, and Barbara Yon. It is also home of the Ridge Quilt Trail. Hours: Fri. & Sat., 10am-2pm or by appointment. Contact: 803/685-5577 or e-mail to ([artassridgespring@gmail.com](mailto:artassridgespring@gmail.com)).

## Rock Hill

**The Rock Hill Pottery Center**, Getty's Art Center, 201 East Main Street, in Old Town Rock Hill. **Ongoing** - Featuring works by Bob Hasselle, Christine White, Katherine Petke, Hope Fregerio, and Brian Schauer. Hours: Mon.-Fri., 10am-4pm and Sat., 10am-2pm. Contact: call 803/370-8109 or find them on Facebook.

## Spartanburg

**Throughout downtown Spartanburg, 3rd Thursday, from 5-8pm** - "Spartanburg ArtWalk," a free self-guided tour through participating galleries across Spartanburg's Cultural

District. Contact: visit ([www.chapmanculturalcenter.org](http://www.chapmanculturalcenter.org)).

**Throughout downtown Spartanburg's Cultural District, Ongoing** - The Creative Crosswalk Project is a public art initiative in which local artists and designers design and paint a series of crosswalk murals, transforming the crosswalks into works of art, on Main Street in Spartanburg, SC. The downtown cultural district area is often bustling with events and pedestrians, and the pedestrians rely heavily on a multitude of crosswalks to safely traverse the downtown Spartanburg area. The problem is that crosswalks are incredibly easy to overlook, they are rarely visually appealing, and they can even be quite dangerous. In an effort to remedy these issues, Chapman Cultural Center, the City of Spartanburg, and the Spartanburg Area Chamber of Commerce came together to organize the Creative Crosswalk Project. For more info visit (<https://www.chapmanculturalcenter.org/pages/blog/detail/article/c0/a1555/>).



Work by Robert Urban - Artists Collective

**Artists Collective I Spartanburg**, 578 West Main St., Spartanburg. **Galleries II & III, Jan. 7 - Feb. 1** - "In the Wood ... From the Earth," features works by six new ACS members. A reception will be held on Jan. 16, from 5-8pm, as part of the Spartanburg ArtWalk. "The Artists Collective I Spartanburg is a welcoming and collaborative environment that inspires creativity for its members and visitors alike," says Cassandra Stephens-Johnson, who is coordinating the exhibit. "We look forward to visitors seeing the beautiful and varied works by these talented new ACS members." The participating artists will be Darryl Jones, Garry Turpin, Tipton Jones-Boiter, Mariam Tucker-Jones, Karina Manukyan and Christine Blackburn. **Solomon Gallery, Jan. 1 - Feb. 22** - "Push & Pull: New Work," featuring works by Robert Urban. A reception will be held on Jan. 16, from 5-8pm, as part of the Spartanburg ArtWalk. Spartanburg artist Robert Urban's latest mixed media works use trees "as a metaphor for family and the relationships we all hold dear within the family circle and beyond." The 30-plus pieces in the show will be offered for purchase with prices ranging from \$150 to \$5,000. "Nature, and specifically trees, are used as metaphors to represent the passage of time, within nature itself, of course, but also within our human relationships - our family, friends and communities," says Urban, originally from Wisconsin. "The exhibition title refers to the many different forces and ways that we experience either a 'push' or a 'pull' - our interactions within nature, relationships and our communities." **Ongoing** - The Collective features a twenty thousand square foot facility offering affordable studio space, retail space, three galleries, a full ceramics studio, printery, and works by 50 local artists. Hours: Tue.-Sat., 10am-4pm; with extended hours on the 3rd Thur. of each month until 9pm for Spartanburg's Art Walk. Contact: 864/804-6501 or at ([artistscollectivespartanburg.org/](http://artistscollectivespartanburg.org/)).

**Curtis R. Harley Art Gallery**, Performing Arts Center, USC-Upstate, 800 University Way, Spartanburg. **Jan. 15 - Feb. 21** - "2024-2025 Student Show," featuring works by USC Upstate Students. **Ongoing** - Directed and curated by Leah Cabinum. Featuring selections from the permanent collection by artists Andy Warhol, Jerry Uelsmann and Beatrice Riese. Hours: Mon.-Fri., 9am-5pm. Contact: e-mail Leah Cabinum at ([lcabinum@uscupstate.edu](mailto:lcabinum@uscupstate.edu)).

**Guild Gallery**, Artists' Guild of Spartanburg, Chapman Cultural Center, 200 East St. John St. Spartanburg. Hours: Mon.-Sat., 10am-5pm & Sun., 1-5pm. Contact: Caitlin Boice at 864/764-9568 or at ([www.artistsguildspartanburg.org](http://www.artistsguildspartanburg.org)).

**Justine V.R. "Nita" Milliken Wing**, Milliken Fine Arts Building, Converse College, Spartanburg. **Ongoing** - Featuring a collection of 52 prints, given by Spartanburg resident Frank Toms which includes works by Joan Miro, Salvador Dali, Alexander Calder, Helmut Newton and others. Hours: Mon.-Fri., 9am-5pm. Contact: 864/596-9181 or e-mail at ([artdesign@converse.edu](mailto:artdesign@converse.edu)).

**Mayfair Art Studios**, a division of Chapman Cultural Center, 1885 Hayne Street, within the Arcadia Mill Village, Spartanburg. **1st Fri. of**

continued on Page 29