

NC Institutional Galleries

continued from Page 43

transform social and cultural history. This show features 25 contemporary artists, including Sanford Biggers, Elizabeth Brim, Maria Britton, Julie Cockburn, Rodney McMillan, Rachel Meginnes, Katy Mixon, Gabriel de la Mora, Yasumasa Morimura, Thomas Schmidt, Shinique Smith, and Do Ho Suh, whose artworks are displayed alongside some of their historical predecessors.

Ongoing - Featuring 10 additional sculptures by the celebrated French artist Rodin on loan from Iris Cantor's private collection. **Ongoing** - "John James Audubon's The Birds of America". The state has owned this treasured volume since 1848, but it has never been exhibited. **Ongoing** - The North Carolina Museum of Art has an outstanding permanent collection of more than 5,000 objects spanning antiquity to the present day. On the occasion of the expansion, the Museum has acquired more than 100 new works of art. Representing commissions, gifts, and purchases, the new works encompass important and diverse examples of historic and contemporary art from around the world, and will be installed in the Museum's new building and the surrounding landscape. Highlights include a gift of 28 sculptures by Auguste Rodin, and work by such internationally acclaimed artists as Roxy Paine, Ursula von Rydingsvard, El Anatsui, Jaume Plensa, Jackie Ferrara, Ellsworth Kelly, and David Park, among others. Admission: Yes for some exhibits. Hours: Tue.-Sat., 9am-5pm; Sun., 10am-5pm; & open until 9pm on Fri. Contact: 919/839-6262 or at (www.ncartmuseum.org).

Sertoma Arts Center, 1400 Millbrook Road, located in the heart of Shelley Lake Park, Raleigh. **Ongoing** - Sertoma Arts Center is a fun, creative destination for all ages, offering classes and workshops in painting, drawing, photography, pottery, performing arts, printmaking, jewelry, fibers studio, fitness, and more, along with exhibitions, studio spaces, group support, and community outreach. Sertoma's outreach partners include the North Carolina Arts Council and Wake County Public School System. It is part of a learning community of 11 arts organizations that collaborate to advocate for and improve access to the arts for people with disabilities. This collective is funded in part by the City of Raleigh Arts Commission and the United Arts Council of Raleigh and Wake County. Hours: Mon.-Thur., 9am-10pm; Fri., 9am-1pm; Sat., 10am-5pm; & Sun., noon-5pm. Contact: 919/996-2329 or e-mail to (sertomaartscenter@raleighnc.gov).

ALTERNATE ART SPACES - Raleigh
Duke Energy Center for the Performing Arts, 2 East South Street, Raleigh. **Ongoing** - The Betty Ray McCain Gallery is nestled within the Duke Energy Center for the Performing Arts, and is the proud home of the North Carolina Artists Exhibition, a collection of work by state artists, selected each year by respected local museum and gallery directors from hundreds of submissions. For info contact Susan Garrity by e-mail at (artistsexhibition@gmail.com). Hours: during performances or call. Contact: call 919/831-6060 for hours and directions.

Rocky Mount

Maria V. Howard Arts Center, Imperial Centre for the Arts and Sciences, 270 Gay Street, Rocky Mount. **Ongoing** - The Arts Center Permanent Collection consists of 500+ works by artists primarily from North Carolina and the southeast. The collection includes key regional artists such as Frances Speight, Sarah Blakeslee, Ben Owen, Sr., Mark Hewitt, Cynthia Bringle, Billie Ruth Sudduth, Hobson Pittman and Louis Orr. Acquisitions are funded through the City of Rocky Mount and private donations. Hours: Tue.-Sat., 10am-5pm & Sun., 1-5pm. Contact: 252/972-1163 or at (www.imperialcentre.org/arts).

Mims Art Gallery, Dunn Center for the Performing Arts, NC Wesleyan College Campus, 3400 N. Wesleyan Blvd., Rocky Mount. **Through Jan. 13** - "Bringing Back the JOY with Bob Ross". The new 2024 exhibition will feature 76 new and different paintings from last year on display at NCWU, these were featured on his long running PBS show "The Joy of Painting". This will be the second Bob Ross exhibit in North Carolina, and still the largest exhibition under one roof. Bob Ross art classes will be taught by Melissa Pierce, a Bob Ross Inc. certified instructor. And check out, "The Joy of Painting: The Musical by Caleb Cabinets" and a talk by Jim Needham, general manager that worked with Bob from 1982 to 1992 with The Joy of Painting. Get your tickets. Hours: Mon.-Fri., 9am-5pm. Contact: call Jan Volz, Gallery Art Curator, at 252/985-5268 or e-mail to (jvolz@ncwu.edu).

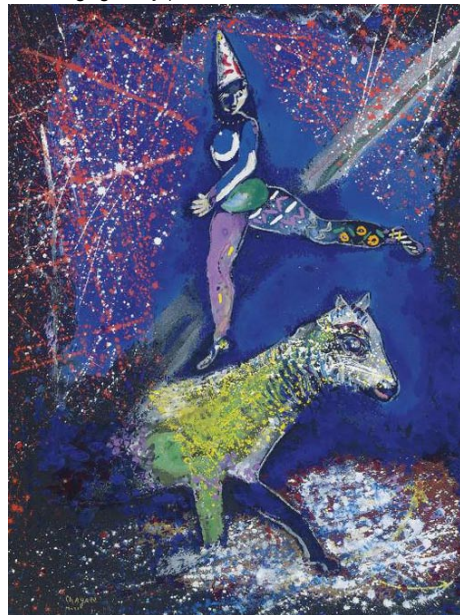
Rutherfordton

Rutherford County Visual Arts Center & Gallery, 160 N. Main Street, at the intersection of W.

Court St., Rutherfordton. **Ongoing** - Offering a changing exhibit of 2D and 3D art including oils, watercolor, scratchboard, calligraphy, fiber, wood, glass, pottery and fine craft by local artists/fine crafters. Hours: Tue.-Sat., 10am-3pm. Contact: 828/288-5009 or at (www.artatthevac.com).

Salisbury/Spencer

The Bridge Gallery, North Campus, Building N107, Rowan-Cabarrus Community College, 1333 Jake Alexander Blvd. S., Salisbury. **Through Jan. 27** - "Hands-On," presents works made with a wide range of materials and technical methods and aims to highlight the variety of sculptural approaches in classes offered in the Art & Design program. **Ongoing** - The mission of The Bridge Gallery is to serve the surrounding communities and provide inclusive programming that enriches lives through shared creative experience. The Bridge is a space for artists and community members to come together and freely explore diverse perspectives in a brave space. As part of our ongoing effort to provide people with a variety of contexts, we seek artists, art groups and project proposals whose diversity of identity and communication reflect our world. Hours: Mon.-Fri., 9am-4pm. Contact: K Bailey Wingler at 704/216-3627, e-mail to (bailey.wingler@rccc.edu) or at (<https://www.rccc.edu/finearts/thebridgegallery/>).



Marc Chagall "L'acrobate à cheval", 1927-28, The Robertson Foundation Art Collection.

Waterworks Visual Arts Center, 123 E. Liberty St., in the East Square Arts District, located one block East of Main Street, across from the Salisbury Police Station, Salisbury. **Through Aug. 30** - "ART for ALL: Enriching Lives with ART". Waterworks Visual Arts Center is pleased to announce a yearlong exhibition of paintings and sculpture from the personal collection of the late New York philanthropists Julian and Josie Robertson. The show will include more than 20 works by leading European modern artists, including Pierre Bonnard, André Derain, Paul Gauguin, Wassily Kandinsky, Fernand Léger, Claude Monet, Francis Picabia, Pablo Picasso, Camille Pissarro, and Paul Signac, as well as influential postwar painters Willem de Kooning and Franz Kline. Spanning over 100 years of art history, the works will provide viewers with a vivid sense of key movements, from Cubism to Abstract Expressionism. Showing concurrently will be selected photographs from the 1937 Bostian's Alley Collection and a series of contemporary oil portraits by North Carolina painter, Maria Bennett Hock. **Ongoing** - At Waterworks, all exhibitions are free to see (donations gladly accepted). The galleries and Museum Store are open Monday-Friday, 10 am-4 pm. An elevator, braille signage, bench seating in all galleries, and wide hallways make the museum accessible to everyone. Visitors can experience the gated sensory garden, as well as sculpture gardens around the building. Waterworks offers three rotating exhibitions a year, K-12 Student exhibitions, and art classes for students ages 18 months to 100. Keep abreast of exhibitions, events, art classes, and new art for sale in the Museum Store. Hours: Mon.-Fri., 10am-4pm, (business hours M-F, 9 am-5 pm). Contact: 704/636-1882 or at (www.waterworks.org).

Sanford

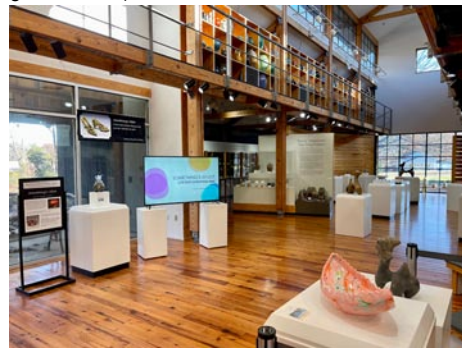
Brick City Gallery, in the historic Mann Center, Suite 211, 507 N. Steele Street, Sanford. **Ongoing** - Featuring over 200 works of art by 21 Sanford Brush & Palette Club members, including paintings, pottery, notecards, journals, and novelty items. The Sanford Brush & Palette Club was founded in 1964 with seven members. We've grown into a membership of more than one hundred diverse, talented artists. The values of the founding members - who

believed that fellowship and education were vital to artistic growth - continue to be our main objective. Hours: Tue.-Sat., 11am-4pm. Contact: 919/364-0588 or at (sanfordarts.org).

Oxide Gallery of Fine Art, 148 S. Moore Street. Historic Downtown Sanford. **Ongoing** - Presented by Lee County Fine Arts. Our gallery will present regular monthly exhibitions, fine art gifts, art competition shows, and access to working artists in Central North Carolina. The Gallery's NC Gift Shop features work by over a dozen local and regional artists. Guests can enjoy fabrics, mosaic, glass art, stoneware clay sculpture, decorative functional and food safe pottery, note cards and journals, and the famous Art-o-mat. Hours: Tue.-Sat., 11am-5pm. Contact: 919/278-7270 or at (oxideart.com).

Seagrove Area

Carolina Bronze Sculpture Garden, Carolina Bronze, 6108 Maple Springs Road, Seagrove. **Ongoing** - The Carolina Bronze Sculpture Garden is a natural and landscaped area overlooking a beautiful 1.25 acre pond. A walking trail loops around the pond with benches and a picnic area along the trail. The Sculpture Garden collection consists of donated and loaned sculptures from emerging and established artists working in all 3D media suitable for the outdoors. There are currently 19 sculptures installed around the pond. The landscaped and natural areas have a focus on NC native plants and trees. As an extension of this park, a sculpture is installed in the downtown area of Seagrove. Hours: Mon.-Fri., 8:30am-4pm. Contact: 336/873-8291 or at (www.cbssculpturegarden.com).



A view inside the NC Pottery Center

North Carolina Pottery Center, 233 East Avenue, Seagrove. **Ongoing** - Featuring permanent and changing exhibits on the history of North Carolina pottery, "The North Carolina Pottery Tradition" and "Seagrove Area Pottery". The Center also offers information on activities, maps and information about the potteries located in the Seagrove area and across the state. A display of representative works from more than 90 area potteries is also offered. Hours: Tue.-Sat., 10am-4pm. Contact 336/873-8430 or at (www.ncpotterycenter.org).

Seagrove Area Pottery Center (Not the NC Pottery Center), 122 E. Main St., Seagrove. **Ongoing** - The former museum organization was founded twenty-five years ago in Seagrove, and is dedicated to preserving and perpetuating the pottery tradition. We strive to impart to new generations the history of traditional pottery and an appreciation for its simple and elegant beauty. A display of area pottery is now offered in the old Seagrove grocery building. Hours: Mon.-Sat., 9:30am-3:30pm. Contact: 336/873-7887.

STARworks Center for Creative Enterprise, 100 Russell Drive, just seven miles south of Seagrove in Star. STARworks is a project of Central Park NC, a 501-(c)(3) not for profit organization based in rural central North Carolina. The mission of CPNC is to grow a new rural economy based on the sustainable use of the natural and cultural resources of the region. **STARworks Businesses: STARworks Glass** is a public access glass studio that offers rental space for glass artists, classes and workshops for the general public, a resident artist and internship program, and high school and college glass curriculum. In addition to fundraisers like our Pumpkin Patch and Holiday Ornament Sale, STARworks Glass also holds free demonstrations on the second Thursday of each month at Hot Glass Cold Beer. **STARworks Ceramics** uses native NC wild clays to produce clay bodies that are manufactured with a filter press on site. We also sell pottery supplies and equipment. In addition to our STARworks clays, we offer both Highwater and Standard clays, and tools and equipment from Shimpo, Cone Art Kilns, Mudtools, AMACO, Kemper Tools and Orton. **STARworks Clay Studio** offers a residency program for ceramic artists. Our facilities allow for large workshop spaces placed side by side, supporting a collaborative and energetic educational environment. In addition to the residency program, STARworks Clay studio offers classes and workshops for adults. STARworks is also home to **Wet Dog Glass**, the most trusted and dependable equipment maker and consultant for glass artists and craftspeople worldwide. **School House Gallery, Ongoing**

- The gallery is filled with a selection of works from artists and artisans alike, bringing hand crafted wares into a new light. From one of a kind tableware crafted from locally mined clay paired with handwoven placemats, to simple yet elegant glass goods designed with our utilitarian ideals in mind, our functional collections are a must have for any home. Our gallery also features a selection of sculptures that gray the lines between want and need. Whether your desire is to capture an experience with one of our artists or our team, decorate your home with memories of your travels, or to treat yourself and others to a unique handmade gift, we have something for everyone to make your time here unforgettable. Gallery Hours: Mon.-Sat., 9am-5pm. **STARworks Café & Taproom** - Featuring Espresso, Iced & Frozen Coffee, Coffee, Tea, Cocoa, Smoothies, Beer & Wine, Soda, Bottled Water, Snapple, Snacks, and Pastries. And, live music some nights - visit (<https://www.starworksnsc.org/cafe-taproom/>) for the schedule. Hours: Mon., 9am-3pm & Tue.-Sat., 9am-9pm. STARworks General Hours: Mon.-Sat., 9am-5pm. Contact: Claire Sellers, Starworks Communications Coordinator by e-mail at (claire@starworksnsc.org).

Siler City

North Carolina Arts Incubator Gallery, 223 N Chatham Ave., Siler City. **Ongoing** - Featuring the handcrafted work of over 30 Incubator and regional artists in a variety of mediums including painting, pottery, stained and fused glass, fabric art, cards, photography, wood, jewelry, metal, baskets and more. There is a broad range of items and prices. Hours: Mon.-Sat., 10am-5pm; & 3rd Fri., 10am-9pm. Contact: 919/663-2072 or at (www.ncartsincubator.org).

PAF Gallery, 223 N Chatham Ave., Siler City. **Ongoing** - A gallery featuring works by local and regional artists. Hours: 3rd Fri. 6-9pm. Contact: 919/663-2072 or at (www.ncartsincubator.org).

Southport

Franklin Square Gallery, 130 E. West St., Southport. **Ongoing** - Works by members of the Associated Artists of Southport. Hours: Mon.-Sat., 10am-5pm. Contact: 910/457-5450 or at (www.franklinsquaregallery.com).

Spruce Pine

Spruce Pine Gallery, TRAC Arts Center, Toe River Arts Council, 269 Oak Avenue, Spruce Pine. **Ongoing** - Toe River Arts will feature artist demonstrations and continue to sell artist's work in the gift shop. Hours: Tue.-Sat., 10:30am-5pm. Contact: 828/682-7215 or at (www.toeriverarts.org).

Statesville

Louise Gilbert Art Gallery, Mitchell Community College, 420 Walnut Street, Statesville. **Ongoing** - For more than 25 years, the Louise Gilbert Art Gallery, hosted and curated by Mitchell's Department of Art, has played a vital role in the visual arts in Iredell County. The Gilbert Gallery serves as a vibrant space for students and visitors to explore ideas, techniques, forms and mediums. Our exhibits and installations feature award-winning local, national and international artists whose work includes traditional, folk, outsider and experimental styles. Hours: Mon.-Fri., 8am-5pm. Contact: call 704/878-3271.

Sylva

Gallery One, Home of the Jackson County Visual Arts Association, 604 West Main Street, Sylva. **Ongoing** - The gallery is home to over 20 artists local to the area. Gallery 1 is a not for profit gallery operated as a club to provide a space for professional and emerging artists to share their artistic endeavors, display works sold to help support their vocation. Hours: Thur.-Fri., 11am-3pm and Sat., noon-4pm. Contact: Tim Lewis 828/337-3468 or James Smythe 828/507-4248.

Tryon

Tryon Arts and Crafts School, 373 Harmon Field Rd., Harmon Field, Tryon. **Gift Shop, Ongoing** - Gift Shop features juried works by regional artisans to selected work produced by our instructors and students. Hours: Mon.-Fri., 9am-4pm & Sat. 9am -1pm. Contact: 828/859-8323 or at (www.tryonartsandcrafts.org).

Tryon Fine Arts Center, 34 Melrose Ave., Tryon. **JP Gallery, Through Jan. 10** - "TFAC Enduring Art Collection," featuring the work of Jeanne Parker and Phyllis Allen Eifert. Hours: Tue.-Fri., 10am-4pm. Contact: 828/859-8322 or at (www.tryonarts.org).

continued on Page 45