

# Gallery Mélange in Asheville, NC

continued from Page 19

Join us at Gallery Mélange for an unforgettable winter gathering that celebrates the transforming power of art, community, and the season's enchanting spirit.

Founded by artists from the River Arts District and dedicated to celebrating contemporary abstract art, ceramics, sculptures, and fine jewelry, Gallery Mélange is a creative hub in Asheville, NC. The gallery's mission is to inspire, engage, and connect art enthusiasts, collectors, and the local community with inventive exhibitions and events throughout the year.

For further information check our NC Commercial Gallery listings, call the gallery at 828/782-1110 or e-mail to (info@gallerymelange.com).

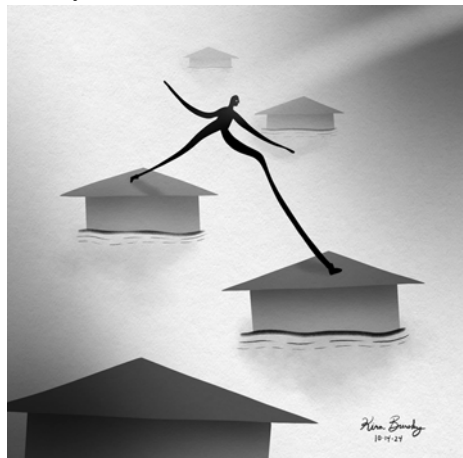


Work by Mark Bettis

## Transylvania Community Arts Center Gallery in Brevard, NC, Offers Works by WNC Artists Affected by Hurricane Helene

The Transylvania Community Arts Center Gallery in Brevard, NC, is presenting two exhibits including: *Community: an open exhibition of fine art & craft* and *Hurricane Helene Exhibition*, featuring works by Kira Bursky, both on view through Feb. 15, 2025.

The year 2024, and particularly Hurricane Helene, showed Western North Carolina the importance of "Community." Our community can provide us with support, a sense of belonging, and many other benefits, but the theme of "Community" is intentionally broad and open to many interpretations. How do you as an artist envision community? How is "Community" visually evident in Transylvania County or in other areas?



Work by Kira Bursky

The exhibition, Hurricane Helene Exhibition, features works by Kira Bursky. Her entire collection of 31 artworks will be on display alongside other storm-affected artists as a part of the *Community* exhibition.

## Blowing Rock Art and History Museum in Blowing Rock, NC, Features Works by Sarah Vaughn

The Blowing Rock Art and History Museum (BRAHM) in Blowing Rock, NC, will present *Considerations: An Installation by Sarah Vaughn*, on view in the Museum's Atwell Gallery, from Feb. 15 through Aug. 10, 2025. A reception will be held on Feb. 20, with the Curator Talk at 6 - 7pm, in the gallery.

Sarah Vaughn's *Considerations* invites visitors to step into a landscape of thousands of carefully crafted glass river rocks. Made using techniques like blowing, flame-working, casting, and laminating, these fragile stones are stacked and arranged to create an immersive installation that explores how we experience and remember the world around us. Each glass rock represents a moment in time - some tied to personal memories, others shaped from reclaimed glass, blending stories of



Work by Kira Bursky

Art prints and the full art collection book are available for purchase. 20% of profits will be donated to BeLoved Asheville and ArtsAVL towards Hurricane Helene relief efforts. You can view the full collection in Kira's shop at (<https://allaroundartsyfashion.com/.../hurricane-helene>...).

Bursky says, "After Hurricane Helene came through my town, I drew to process my feelings. The 31 drawings were created once a day during October. These drawings are dedicated to all those affected by Hurricane Helene and those who have gone through other experiences that have shaken up the world they know. I am inspired by art's power to give us space to process, reflect, and heal. Thank you for taking the time to sit with these artworks. I send out my love and gratitude"

For further information check our NC Institutional Gallery listings, call the gallery at 828/884-2787 or visit (<http://www.tcarts.org/>).



Detail of installation by Sarah Vaughn

loss and creation.

Rocks are ordinary objects, but they often carry extraordinary meaning. Many of us have picked up, collected, and treasured a favorite rock, drawn to its weight, texture, or beauty. Vaughn's glass rocks amplify these familiar associations

continued above on next column to the right

while asking us to reflect on their delicate, untouchable surfaces. Like rocks in a riverbed, changing and smoothing over time, memories tumble through our minds over years and decades. They can become smoother, but they can also sharpen, grow indelible, or fade until they disappear entirely.

This installation is envisioned as the first of many, evolving to respond to the architecture of each new space it inhabits. By blending the personal and the collective, Vaughn invites us to reflect on how simple objects can stir deep, lasting memories. She sees these glass rocks as symbols of resilience - fragile yet enduring - which capture the layers of individual and shared memory that shape who we are. Through her work, she transforms something seemingly simple into a profound meditation on time, connection, and the stories we carry.

Ian Gabriel Wilson, Curator at BRAHM notes, "We're thrilled to present *Considerations: An Installation by Sarah Vaughn*. Over the past three years, I've had the privilege of working closely with Sarah to develop this thought-provoking installation. Her technical skill with the medium of glass is astonishing, matched only by the physically and emotionally immersive environment she constructs with thousands of these discrete sculptures. The larger work is at once precarious and disarming, inviting viewers to engage with themes that are both acutely personal and universally relatable. This exhibition epitomizes BRAHM's commitment to showcasing artists who challenge us to see the world - and ourselves - through a transformative lens."

The exhibition is supported through a Project Support Grant of The North Carolina Arts Council, a division of the Department of Natural and Cultural Resources. Project Support is designed to help organizations that are producing and/or presenting specific arts programs

## Blowing Rock Art & History Museum in Blowing Rock, NC, Features Children's Book Illustrations

The Blowing Rock Art & History Museum (BRAHM) in Blowing Rock, NC, is presenting *Storyboard to Storybook: The Beulah Campbell Collection at Appalachian State University*, an exhibition celebrating the creativity behind mid-20th-century children's literature, on view in the Rankin West and East Galleries, through June 8, 2025.

Featuring more than 30 original illustrations, collages and preparatory drawings, *Storyboard to Storybook* offers a behind-the-scenes look at how artists crafted iconic children's stories. Spanning the 1950s to the 1980s, the collection explores themes of identity, heritage and imagination, reflecting the shifting cultural landscape of the time.

The works are drawn from the Beulah Campbell Collection at Appalachian State University's Belk Library Special Collections, a rich archive of children's literature and illustration. Visitors will rediscover beloved stories while gaining a deeper appreciation for the artistic process behind them.

The exhibition delves into the intricate stages of book creation, showcasing manuscript mock-ups and printer's proofs, which reveal the collaboration between authors and illustrators. At the gallery's interactive Storyboard Station, visitors can craft their own narratives and explore the steps to building a compelling story arc.

Youth aged 12-18 are invited to join us at BRAHM every second Saturday from 11am until 1pm this winter and spring for directed studio time inspired by famous artists. Explore new styles and processes for making art. Free for the community. Reservations encouraged due to limited space. Visit ([blowingrockmuseum.org/calendar/studio-saturday](http://blowingrockmuseum.org/calendar/studio-saturday)).

Many believe that literature serves as a window to the world for children, and Beulah Campbell embodied that belief throughout her life. As a professor of elementary education at Appalachian State University, she understood the vital con-

nection between illustrations and text in children's books. Over her 40-year career, Campbell built a collection of original artwork by renowned children's book illustrators, while also fostering a deep appreciation for children's literature in her students. Speakers Margaret Gregor and Jackie Eagleson will discuss Campbell's legacy and the art she collected.

Beulah Campbell, an influential educator at Appalachian State Teachers College, championed the artistic value of children's book illustrations. In the 1970s, she began curating a personal collection to enhance her teaching, focusing on works by Caldecott and Kate Greenaway medalists.

The collection reflects a transformative era in children's publishing, as illustrators embraced themes of social equality and cultural diversity. Campbell's vision captured the evolving narrative power of illustrations and their role in shaping young minds. Today, her collection serves as an invaluable resource for exploring the intersection of art, storytelling and education.

The Special Collections Research Center at Appalachian State University formed with the opening of the Carol Grotnes Belk Library and Information Commons in 2005. The formation united three signature collections (W. L. Eury Appalachian Collection, Stock Car Racing Collection, and University Archives & Records) and began the development of the Rare Books & Manuscripts Collection.

The core mission of the Special Collections Research Center is to collect, preserve and provide access to original materials related to our primary collecting areas. We promote the use of our collections through exhibits, instruction, public programming, digitization and social media. In addition, we house thoughtfully curated research collections consisting of secondary source material related to the Appalachian region and stock car racing. Collections and activities support teach-

continued on Page 21