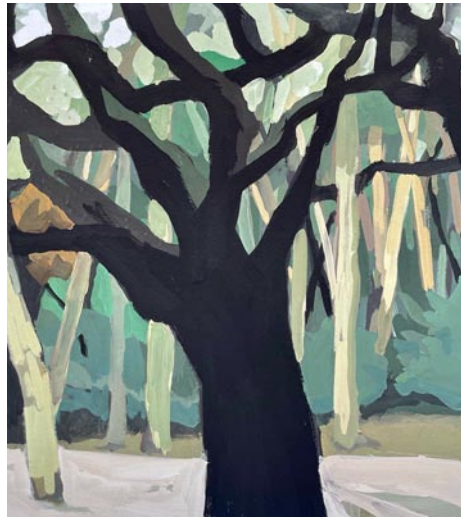


SC Commercial Galleries

continued from Page 43

Four Green Fields Gallery & Gifts, 117-A Central Ave., Summerville. **Ongoing** - Featuring the new home of Silver Pail Pottery by potters Jillian and Robin Carway. The gallery showcases the work of 45+ American fine craft artists with an emphasis on local and South Carolina artisans. Offering a wide range of talent from the master potter to the emerging silversmith. Other media represented include fiber, wood, photography, baskets, paper, glass, metal, leather and handmade artisan products. Craft artists interested in exhibiting with Four Green Fields can find an "Artist Info Packet" on the website. Hours: Mon.-Sat., 10am-5pm. Contact: 843/261-7680 or at (www.fourgreengallery.com).

Imperial Framing & Specialities, 960 Bacons Bridge Road, Palmetto Plaza, Summerville. **Ongoing** - Featuring works by Lowcountry artists. Hours: Mon.-Fri., 10am-6pm & Sat., 10am-2pm. Contact: 843/871-9712.



Work by Karyn Healey

Karyn Healey Art, just off Hutchinson Square in the heart of Summerville. **Ongoing** - Karyn is a painter observing life in the Lowcountry of South Carolina, focusing on stories of daily life and social issues in oil paint, gouache, casein, and collage. Hours: Open by appointment only. Contact: Call 843/609-7404; (<https://www.instagram.com/karynhealeyart/>) or (<https://m.facebook.com/KarynHealeyArt>).

People, Places, & Quilts, 129 W. Richardson Avenue, Summerville. **Ongoing** - Featuring fabric, books, patterns, notions, quilts and Folk Art. Hours: Mon.-Fri., 10am-5:30pm and Sat., 10am-5pm. Contact: 843/937-9333 or at (www.pquilts.com).

Alternative Art Spaces
Coastal Coffee Roaster, 106 E. 3rd North Street, Summerville. **Ongoing** - Coastal Coffee Roasters began as a simple idea: to share our family's passion for fresh, organic coffee with the world. We love the coast as much as we love our coffee, so we headed towards the South Carolina Coast with our vision of transforming the world's highest quality, sustainably grown beans into the best freshly roasted coffee available. We use a creative, locally roasted process to bring our passion for great coffee to life in every bag. Hours: Mon.-Sat., 7am-2pm. Contact: 843/378-4559.

Travelers Rest

White Rabbit Fine Art Gallery, 5 So. Main Street, Travelers Rest. **Ongoing** - Our ongoing exhibit is ever-changing and features the work of the founding members of the Gallery; all are local artists from the Upstate area. Hours: Tue.-Sun., 11am-5pm; Fri. & Sat., 11am-6pm and 1st on First Fri. Contact: Patty Cunningham at 610/659-4669; or Susan Savage at 864/903-3371; or at (<http://www.artintr.com/white-rabbit-gallery.html>).

Wild Hare Gallery & Studios, 212 N. Poinsett Hwy., Travelers Rest. **Ongoing** - Wild Hare Gallery is Travelers Rest's newest art gallery, owned by local artists Kym Easter and Joann Benzinger. The focus of the WH Gallery is on modern, local arts and fine crafts. Guest artists are exhibited for three to six months; this allows for new and interesting art at all times. Hours: Tue.-Fri., 11am-4pm or by appt. Contact: call 864/630-1423. 864/444-1152 or at (www.wildharegallery.com).

Walterboro

Artists' Hub of the Ace Basin, 255 East Washington Street, Walterboro. **Ongoing** - Featuring a co-op of local artists and crafters from the Ace Basin area. Hours: Mon.-Sat., 10am-9pm. Contact: 843/635-2682.

NC Institutional Galleries

Editor's Note: I wish I could tell you that everything listed here is open or every event would happen, but we just don't know for sure and I don't blame any of the presenters if we were the last thing on their minds while dealing with this current disaster. My best advise to you is call before you go to visit someplace or go to see an exhibit listed. That's mostly for the areas hit by Hurricane Helene, in this case, Western NC.

Aberdeen

The Exchange Street Gallery of Fine Art, 129 Exchange Street, in the old Aberdeen Rockfish Railroad storage terminal, Aberdeen. **Ongoing** - The Artist's League of the Sandhills currently houses 35 artists-in-residence studios and offers classes by local professional artists and workshops by nationally known artists. Hours: Mon.-Sat., noon-3pm. Contact: 910/944-3979, or at (www.artistleague.org).

Alamance County

BAL Gallery, Holly Hill Mall and Business Center, 309 Huffman Mill Rd., Exit 141 off of I85/I40, Burlington. **Ongoing** - Since the beginning of Burlington Artists League in 1972, we have grown to represent many local artists in our immediate area. BAL's express purpose is to promote and elevate the area artists and their fine art spirit in Burlington, NC, and surrounding areas, thereby creating outlets for the artists and encouraging their continuing efforts to improve and create more art work. Along with wall art and bin reproductions, the BAL Artists Gallery also includes 3-D art such as sculptures and pottery. Hours: Mon.-Fri., noon-8pm; Sat., 10am-9pm, & Sun. for special events. Contact: 336-584-3005 or at (<https://burlingtonartistleague.com/>).

1873 Capt. James & Emma Holt White House, 213 South Main Street, 2 1/2 blocks off I85/40, exit#147, Graham. Home of the Alamance County Arts Council. **Ongoing** - We are committed to shaping the cultural identity of Alamance County by making art a tangible presence in the

lives of its citizens. We strive to enhance the quality of life by engaging people in a diverse array of art through the delivery of programming and education, and through the provision of facilities, advocacy, promotion, and funding. **Ongoing** - Picasso's Gift Shop, located in the Captain White House, promises unique finds of local, regional, and international art. The beautiful arts and craft items sold in the store help support the artist in the community. Featuring a wide variety of art, pottery and glass. Admission: free. Hours: Mon.-Sat., 9am-5pm. Contact: 336/226-4495 or at (www.alamancearts.org).

Albemarle

Falling Rivers Gallery, 330-N Second Street, Albemarle. **Through Feb. 8** - "Stanly Arts Guild Annual Members Art Exhibition & Competition". **Ongoing** - The gallery is a cooperative venue of the Stanly Arts Guild. Member staffed, this gallery offers the very best in local art and crafts including oil and watercolor, photography, pottery and ceramic art, jewelry, native American art, gourd sculpture and much more. Hours: Tue.-Fri., 10am-5pm; Thur. till 6:30pm & Sat., 10am-4pm. Contact: 704/983-4278 or at (www.fallingriversgallery.com).

Apex

Throughout the downtown area of Apex, Through Mar. 2025 - "4th Annual Apex Sculpture Walk". This exhibition offers works by established and emerging professional artists on display throughout the heart of beautiful downtown Apex. For further info visit (<https://www.apexnc.org/1642/Apex-Sculpture-Walk-2024-2025>).

The Halle Cultural Arts Center, 237 North Salem Street, Apex. **Main Gallery, Through Feb. 2** - "Hanging by a Thread: Artist Retrospective," featuring works by Jenny Eggleston. This exhibition features a career-spanning selection of Eggleston's vibrant and thought-provoking works, highlighting her unique approach to color, form, and storytelling. Known for her evocative abstract pieces, harrowing socio-political paintings, and innovative use of mixed media, Eggleston's career has captivated audiences with

its depth and originality for decades. Join us for an evening of artistic exploration, with insights into her creative journey and a chance to engage with her influential body of work. **Feb. 7 - Mar. 30** - "Egg in Nest Art Studio: Wild At Heart!". A reception will be held on Feb. 7, from 6-8pm. Join us for an enchanting art exhibition celebrating creativity and love! The young artists of Egg in Nest Art Studio will unleash their imaginations, showcasing vibrant works that incorporate hidden or prominent heart images. Explore, celebrate, and feel the wild heart within! Hours: Mon.-Fri., 9am-6pm & sat., 9am-1pm. Contact: 919/249-1120 or at (www.apexnc.org).

Asheville Area



Jaime Byrd, "The Soaked Earth", 2024, oil on wood, 18x24x2 inches. Courtesy of the artist.

Asheville Art Museum, 2 South Pack Square at Pack Place, Asheville. **Explore Asheville Exhibition Hall, Through Feb. 20** - "American Made: Paintings and Sculpture from the DeMell Jacobsen Collection". The exhibition features over 80 paintings and sculptures. Though many objects in the exhibition have been on view at other museums, ranging from the Metropolitan Museum of Art to the Smithsonian American Art Museum, this exhibition showcases the best of the DeMell Jacobsen Collection brought together in one location. "American Made" provides an in-depth look at the evolution of American creativity from the Colonial era to the early 20th century. The highlights include portraits by masters like Benjamin West, Thomas Sully, and Sarah Miriam Peale. There are sweeping landscapes by Thomas Cole, Asher B. Durand, and Jasper Francis Cropsey, and still lifes by Severin Rosen, Charles Ethan Porter, and Adelaide Coburn Palmer. The exhibition also features captivating genre scenes and the work of American artists who traveled to Europe, such as Mary Cassatt, John Singer Sargent, and Childe Hassam.

Appleby Foundation Exhibition Hall, Feb. 13 - May 5 - "Asheville Strong: Celebrating Art and Community After Hurricane Helene," will showcase work from artists who live and work in the Helene-affected Appalachia region. This special, non-juried exhibition will celebrate the strength and diversity of our regional arts community acknowledging the significant impact of Hurricane Helene on the lives of artists across Southern Appalachia. Asheville Strong features a variety of mediums, including painting, drawing, printmaking, sculpture, ceramics, and photography. Each work is accompanied by the artist's information, allowing viewers to connect and learn more about the creators. A reception and member preview will be held on Feb. 13, from 3:30-6pm. A special afternoon honoring artists and their families. A special afternoon honoring artists and their families will be held on Feb. 14, opening day (Included with Museum admission). On Mar. 15, from noon to 5pm: Community Day—Free community event celebrating the artists and the exhibition, featuring related tours, activities and entertainment for all ages. **The Van Winkle Law Firm Gallery, Through May 31** - "Anti Form: Robert Morris's Earth Projects". The Asheville Art Museum presents Anti Form: Robert Morris's Earth Projects. The suite of lithographic drawings by Robert Morris presents a series of ideas for ten works of art shaped out of earth, atmospheric conditions, and built environments. Created in 1969, the series marks an important moment when artists began to reimagine what art could be. Morris was a pioneer in conceptual art working at the forefront of Minimalism, Process art, and Land art. He theorized and championed the work of art as an idea rather than a physical form, influencing generations of artists to come. This exhibition is organized by the Asheville Art Museum and Jessica Orzulak, Associate Curator and Curatorial Affairs Manager. **Debra McClinton Gallery, Through Mar. 31** - "Forces of Nature: Ceramics from the Hayes Collection". Ceramic artists throughout history have become masters of all four elements - creating clay from a mixture of earth and water to shape their work, drying it in air, and hardening it in fire. Throughout this process, the artist decides which aspects of the work will be tightly controlled, and when the elements can step in to leave nature's mark. This exhibition traces the historical, stylistic, and conceptual origins of work that either embraces or refuses the element of chance in ceramics, looking at modern and contemporary work made in Western North Carolina. The ceramics in this exhibition are all drawn from the robust collection of Andrew and Hatha Hayes, who have been collecting important regional pottery and sculpture for decades. Through their close relationships with artists, they have brought together works

that show not only the different aesthetics seen in the region, but also a picture of the ceramics community. Regional artists including Cynthia Bringle, Donna Craven, Mark Hewitt, Fred Johnston, Ben Owen III, and Norm Schulman will be on view, demonstrating the many different approaches to ceramics in this region. **Ongoing** - The Asheville Art Museum, the hub for 20th- and 21st-century American art in Western North Carolina, has re-opened to the public. The \$24+ million, state-of-the-art facility encompasses 54,000 square feet and adds 70 percent more Collection gallery space. For the first time in the Museum's history, it has the capacity to host major traveling exhibitions from nationally recognized museums. The expansion increases its physical space and dramatically increases its role as a community center, educational resource, economic engine for WNC, and cultural concierge for the region's residents and visitors. Admission: Yes and **Pay-What-You-Wish admission for visitors from areas affected by Hurricane Helene.** Hours: Tue.-Sat., 10am-5pm; Fri. till 8pm & Sun., 1-5pm. Contact: 828/253-3227 or at (www.ashevilleart.org).

Asheville Gallery of Art, Ltd., 82 Patton Avenue, across from Pritchard Park opposite the old location, Asheville. **Ongoing** - Featuring original works of art by 31 local artists in oils, acrylics, watercolor, pastel, encaustic, and prints. Hours: Mon., 11am-6pm & Fri.-Sat., noon-5pm or by appt. Contact: 828/251-5796 or at (www.ashevillegallery-of-art.com).

Black Mountain College Museum + Arts Center, 120 College Street, Asheville. **Through Mar. 15** - "The Farm at Black Mountain College". The story of Black Mountain College (BMC) has grown to mythical proportions since the liberal arts school officially closed its doors in 1957. Countless books, exhibitions, and artworks have been created to capture what it was like to live and learn at this singular college and to chart its unparalleled cultural legacy. But before this exhibition and accompanying book, nobody had written about the farm at BMC in any great detail. Built on more than a decade's worth of deep, original archival research, "The Farm at Black Mountain College" exhibition constitutes a deep new history of BMC. By focusing on the farm, the exhibition sidesteps the popular paradigm of approaching BMC through its famous faculty and students, and instead offers a new cast of characters, one that includes mostly students, women, and farmers. It spotlights the importance of collaboration, both on campus among students, faculty, and faculty families, and in the community with farmers and organizations in nearby cities and towns. Finally, the exhibition shows what happens when communal living is no longer communal, and offers a detailed account of the final dark days of the college, a dramatic and often dangerous story. **Ongoing** - An exhibition space dedicated to exploring the history and legacy of the world's most acclaimed experimental educational community, Black Mountain College. Hours: Wed.-Sat., noon-4pm or by appt. Contact: 828/350-8484 or at (www.blackmountaincollege.org).

NC Homespun Museum, next to Grovewood Gallery, at Grove Park Inn, 111 Grovewood Road, Asheville. **Ongoing** - This museum presents a historical overview of Biltmore Industries, an Arts and Crafts enterprise once renowned for its hand-loomed fabrics. The museum showcases memorabilia including photographs, letters, artifacts, woven samples and tailored suits from the active years of the industry. Located on the historic Grovewood grounds, adjacent to The Omni Grove Park Inn. Admission is free (donations appreciated). Hours: Mon.-Sat., 10am-5pm, & Sun., 11am-5pm. Contact: 828/253-7651.

NC Glass Center, 140 Roberts Street, Suite C, Asheville. **Ongoing** - The North Carolina Glass Center is a non-profit, public access glass studio providing daily educational offerings & demonstrations. We are proud to represent the work of our artists and instructors in the NCGC glass gallery. Hours: Mon., Wed., Thur. & Sun., 10am-5pm and Fri. & Sat., 10am-6pm. Contact: 828/505-3552 or at (www.ncglasscenter.org).

Odyssey Co-Op Gallery, 238 Clingman Avenue, Asheville. **Ongoing** - Our Gallery features works by 25 local clay artists, working in a variety of styles to create functional and non-functional pottery and works of figurative and abstract sculpture. Hours: Wed.-Mon., 11am-5pm. Contact: 828/505-8707 or at (<https://www.odysseycoopgallery.com/about/>).

Southern Highland Craft Guild, Biltmore Village, 26 Lodge Street, former Biltmore Oteen Bank Building in Biltmore Village, Asheville. **Ongoing** - Featuring a wide range of work by members of the Southern Highland Craft Guild, including: pottery, glass, wood, jewelry, fiber, metal, paper, mixed media and natural materials. Hours: Mon.-Sat., 10am-7pm & Sun. noon-5pm. Contact: 828-277-6222 or at (www.craftguild.org).

continued on Page 45