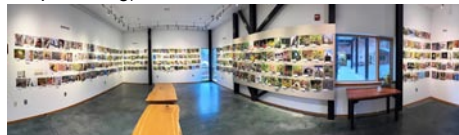


# NC Institutional Galleries

continued from Page 406

Mon.-Fri., 8am-5pm. Contact: 919/962-9001, e-mail to (stonecenter@unc.edu) or visit (<http://sonjahaynesstonectr.unc.edu/>).

**ALTERNATE ART SPACES - Chapel Hill**  
**Horace Williams House, 610 E. Rosemary Street, Chapel Hill. Ongoing** - The Horace Williams House is the only historic house open to the public in Chapel Hill. The house retains its original architecture including woodwork, floors, ceilings, and mantles. They have a collection of antique furniture, including a set of four chairs and a newly acquired settee that once belonged to Horace Williams. They offer self-guided tours of the house, including an exhibit about the history of those who lived there. They also have a number of self-guided walking tours of the surrounding community, which you can pick up free of charge at the Horace Williams House. Explore the historic district along East Franklin Street, wander the Old Chapel Hill Cemetery, and more. Hours: Thur. & Fri., noon-4pm and Sun., 2-5pm. Contact: 919/245-4320 or e-mail to (info@visit-chapelhill.org).



View of the Bird exhibit at the NC Botanical Gardens North Carolina Botanical Garden, 100 Old Mason Farm Road, Chapel Hill. **DeBerry Gallery for Botanical Art & Illustration, Through Mar. 2** - "Birds of North Carolina: A Community Photo Exhibit". This exhibit features nearly 300 photos of wild birds in our state, submitted by members of the public. It's part of our Bird Alliance. Hours: Tue.-Sat., 9am-5pm; Sat., 9am-5pm; & Sun., 1-5pm. Contact: 919/962-0522 or at (<http://ncbg.unc.edu>).

## Charlotte Area

**South End Art Gallery Crawl - From 5-8pm on the 1st Friday of each month.**



View outside the Bechtler Museum of Modern Art

**Bechtler Museum of Modern Art, Levine Center for the Arts, 420 South Tryon St., Charlotte. Through Mar. 3** - "Chance Encounters: Surrealism Then and Now." Surrealism was an artistic and literary movement formed in Paris in 1924 that emphasized the fantastical, dream imagery, and subconscious thought. Privileging experimentation and uninhibited modes of expression, Surrealism produced radical new techniques and visual forms that continue to inspire artists today. Celebrating the 100th anniversary of the publication of the Surrealist Manifesto, the Bechtler's new exhibition, Chance Encounters: Surrealism Then and Now, pairs examples of historical Surrealism from the museum's collection with works by contemporary artists whose practices extend the legacies of Surrealist exploration. Paying tribute to the inclusive and international scope of the movement, the exhibition includes Max Ernst, Meret Oppenheim, Rufino Tamayo, alongside Heri Dono and Naudline Pierre, and includes loans from local private and public collections. **Ongoing** - The Bechtler Museum of Modern Art is named after the family of Andreas Bechtler, a Charlotte resident and native of Switzerland who assembled and inherited a collection of more than 1,400 artworks created by major figures of 20th-century modernism and donated it to the public trust. The Bechtler collection comprises artworks by seminal figures such as Alberto Giacometti, Joan Miro, Jean Tinguely, Max Ernst, Andy Warhol, Alexander Calder, Le Corbusier, Sol LeWitt, Edgar Degas, Nicolas de Stael, Barbara Hepworth and Picasso. Only a handful of the artworks in the Bechtler col-

lection have been on public view in the United States. Admission: Yes. Hours: Mon., Wed.-Sat., 10am-5pm; Sun. noon-5pm; and open until 9pm the 1st. and 3rd. Fri. of each month. Contact: 704/353-9200 or at ([www.bechtler.org](http://www.bechtler.org)).

**Bliss Gallery, established by Holy Angels, 25 N. Main Street, Belmont. Ongoing** - Holy Angels established Bliss Gallery to offer persons who are differently able the opportunity to share creative abilities and showcase their art alongside the works of guest artists during special exhibitions. Hours: Wed.-Sat., noon-4pm. Contact: Harmony Heslop at 704/280-9475, e-mail at (blissgallery@holiangelsnc.org) or visit ([www.holiangelsnc.org](http://www.holiangelsnc.org)).

**Charlotte Art League Gallery & Studios, 4237 Raleigh Street, Charlotte. Ongoing** - CAL houses one of the area's largest collections of local professional and emerging artists, offering affordable fine art in a variety of styles and media: acrylics, oil, pastel, watercolor, mixed media, photography and sculpture, and fiber art. Tour studios of working artists. Admission: Free. Hours: Fri. & Sat., 1-7pm and Sun., 1-5pm. Contact: 704/376-2787 or at ([www.charlotteartleague.org](http://www.charlotteartleague.org)).

**Cornelius Arts Center Gallery, 19725 Oak Street, Cornelius. Ongoing** - The Arts Center Gallery is under the direction of the future Cain Center for the Arts. Hours: Mon.-Fri., 10am-4pm. Contact: 704/896-8823, 980/689-3101 or visit (<https://cainarts.org/>).

**Davidson College, Belk Visual Arts Center, 315 North Main and Griffith Streets, Davidson. Van Every & Smith Galleries, Through Feb. 2** - "Catherine Opie: In Dialogue". Catherine Opie is one of the most important American photographers of our time. For more than three decades she has used her artistic practice to help us see people, places, and subcultures that are often overlooked. Opie has created seminal portraits of the LGBTQIA community, as well as images of high school football players, California surfers, protesters, and tender portraits of herself, friends, and family. She has also drawn our attention to both the natural and built environments, capturing domestic interiors, mini-malls, monuments, freeways, national parks, memorials, and swamps. In her role as a witness, Opie has equally presented back to us both the good and the bad, the losses and the gains, the constructive and the destructive. **Feb. 13 - Apr. 9** - "Warp Weft Water Weeds," featuring works by Elizabeth Bradford. An opening reception will be held on Feb. 13, from 5:30-7:30, kindly RSVP at (<https://community.davidson.edu/elizabeth-bradford-reception>) by Feb. 7. The exhibition highlights the talent of an artist who has spent fifty years diligently working within our own community, capturing the evolving landscapes she holds dear. She draws inspiration from a profound connection to nature through direct observations while hiking or kayaking primarily in the Southeastern United States where she resides. While her works are predominantly representational, they also maintain a relationship with abstraction. The exhibition's accompanying catalogue includes essays by Dr. Emily Stamey, Curator of Academic Programming & Head of Exhibitions at Weatherspoon Art Museum; Dr. Leo Mazow, Louise B. and J. Harwood Cochrane Curator of American Art, Virginia Museum of Fine Arts; and an interview between Bradford and Tyler Green, award-winning historian and critic who has produced and hosted "The Modern Art Notes Podcast" since 2011. Hours: Mon.-Fri., 10am-5pm and Sat. & Sun., noon-4pm. Contact: 704/894-2519 or at ([www.davidsoncollegeartgalleries.org](http://www.davidsoncollegeartgalleries.org)).



Work by Yo Yo Lander

**Harvey B. Gantt Center for African-American Arts & Culture, Levine Center for the Arts, 551 S. Tryon St., Charlotte. Through Aug. 17** - "Cherry, Khalif Tahir Thompson," is the first institutional solo exhibition in the United States, features eight large-scale paintings that explore themes related to identity, memory, and emotion. Imbued with a sense of nostalgia yet charged with a contemporary energy that bridges the tangible and the imagined, Thompson creates layered compositions that invite viewers into intimate spaces, drawing from the

artist's personal experiences, family archives, and broader cultural narratives. "Cherry" invites viewers to explore how identity is remembered, shared, and reimagined, celebrating the complex layers of human experience. **Through May 11** - "YoYo Lander: Between the Quiet, Selected Works from 2019-2024". Known for her portraits of solitary African diasporic subjects, contemporary artist YoYo Lander captures visual form via a psychological and empathetic drive to understand her subjects, not only through the features of their physical bodies but also through moments in which introspection prompts them to most fully reveal themselves. As a self-taught painter and collagist, Lander highlights the multifacetedness of Black identity while also exploring the expressive aspects of the human figure through which gesture, line, posture, and color convey meaning. **Through Apr. 13** - "American Gurl," co-curated by Zehra Zehra and Kilo Kish. The exhibition is an ongoing curatorial project featuring work that explores all shades of American dreaming. This project's installment takes shape as a film exhibition that presents eight films by intergenerational artists with curiosity around the perspectives and nuances within the Black feminine experience and our relationships with beauty, success, freedom, and power in America. "American Gurl" is presented in collaboration with Womxn in Windows, a platform whose mission is to share the perspectives of women of color through video, art, film, and performance. **Ongoing** - Featuring selections from the John & Vivian Hewitt Collection of African-American Art, one of the nation's most important and comprehensive collections of African-American art. Hours: Thur. - Sat., noon-6pm & Sun., noon-6pm. Contact: 704/547-3700 or at ([www.ganttcenter.org](http://www.ganttcenter.org)).

**Lake Norman Art League Gallery, 442 S. Main St., located across the street from Wooden Stone, next to Masterworks; enter at the rear of the building, and turn right into the lobby, Davidson. Ongoing** - Featuring works by Lake Norman Art League members. Hours: Mon.-Fri., 8am-7pm. Contact: 704/620-4450 or at ([www.LKNart.org](http://www.LKNart.org)).



Work by Erin Fostel

**Lamba Gallery, Storrs Building, 100, 9201 University City Blvd. UNC Charlotte Main Campus, Charlotte. Feb. 13 - Mar. 28** - "Erin Fostel: To See Ourselves Seeing". Erin Fostel is a visual artist who creates representational drawings with charcoal. Her work often depicts the everyday moments of life, from images of intimate home interiors to the shared public space. She holds a BFA in Drawing and Art History from the Maryland Institute College of Art and has exhibited in venues throughout the United States and Europe, including the C. Grimaldis Gallery (Baltimore, MD); Virginia Museum of Contemporary Art (Virginia Beach, VA); Utah Museum of Contemporary Art (Salt Lake City, UT); Neon Gallery (Wroclaw, Poland); Moving Poets Novilla (Berlin, Germany); and the Academy Art Museum (Easton, MD). Fostel is a 2019 recipient of the Municipal Art Society of Baltimore City Artist Travel Prize and a Maryland State Arts Council Individual Artist Award. Her drawings are in the collections of the Baltimore Museum of Art, the Maryland Center for History and Culture, CFG Bank, and the Robert W. Deutsch Foundation. Her studio is based in Baltimore. Hours: Mon.-Fri., 9am-5pm. Contact: 704/687-2397.

**Latin American Contemporary Art Projects (LaCa), 1429 Bryant Street, in the heart of the revitalized FreeMoreWest neighborhood, Charlotte. Ongoing** - LaCa Projects is a platform dedicated to the presentation, development, and promotion of Latin American art and culture within the United States. The gallery encourages cross-cultural dialogue by representing a small group of influential and thought-provoking contemporary, emerging and mid-career artists, as well as exhibiting a broader range of work by established and Master Latin American artists. The gallery, which has expertise in a number

of different art media with a significant focus on paintings, will also be part of a larger planned expansion that includes open artist studios and a dining concept. Hours: Mon.-Fri., 1-5pm or by appt. Contact: Neely Verano at (neely@lacaprojects.com) or call 704/609-8487.

**Levine Museum of the New South, 401 South Tryon Street, (former Wells Fargo Museum) Charlotte. Ongoing** - "Charlotte: Moving Forward, Looking Back". To move forward and make the city a better place for everyone, we must look back and learn from choices made in the past. The exhibit tells the story of Charlotte from Native and early European settlement to today. The exhibition combines stories of people, places, and events in a foundational narrative of Charlotte history that answers thought-provoking questions about how we got here and where we are headed. Experience Charlotte stories through objects from the Levine Museum's collections, interactive media displays, and art by local creatives. **Ongoing** - Building a stronger, more equitable community by connecting people to Charlotte and to each other through history, culture, and celebration. Admission: Free. Hours: Tue.-Fri., 11am-5pm; Wed. till 9pm; Sat., 10am-5pm; & Sun., noon-5pm. Contact: 704/333-1887 or at ([museumofthenewsouth.org](http://museumofthenewsouth.org)).



Work by Ellen Lee Klein

**Matthews Town Hall, 232 Matthews Station Street, Matthews. Feb. 4 - Mar. 26** - "Transformed - New Works by Ellen Lee Klein". This exhibition of bold and inventive nature inspired works includes oil and acrylic paintings on canvas and on paper. The artist interprets, while transforming, the mundane contemporary natural world in her North Carolina back yard, daily vistas and environs. Skillfully and generously employing the formal elements to evoke physical and emotional responses in the viewer, she reflects her tongue in cheek responses to contemporary life around her. Hours: Mon.-Fri., 8am-5pm. Contact: 704/847-4411.

**Mint Hill Arts Gallery, 11205 Lawyers Road, Ste. A, Mint Hill. Ongoing** - We are more than just a gallery; we are a vibrant hub of creativity, passionately committed to fostering a thriving arts community. Our gallery's mission is deeply rooted in our connection to the local community. From the moment you step through our doors, you'll be enveloped by the warmth and artistic spirit that defines our town. As artists ourselves, we understand the importance of cultivating an environment that nurtures and celebrates creativity in all its forms. Hours: Wed.-Sat., noon-3pm. Contact: 980/226-5532 or at ([minthillarts.org](http://minthillarts.org)).

**Mint Museum Randolph, 2730 Randolph Road, Charlotte. Through Feb. 16** - "Objects of Affection: Jewelry by Robert Ebendorf From the Porter • Price Collection". This exhibition celebrates the work of artist Robert Ebendorf, one of the most influential artists in the studio jewelry movement, beginning in the 1960s to today. The exhibition features more than 180 works of jewelry, metalwork, drawings, and archival materials drawn from the Porter • Price Collection designed by Ebendorf, as well as faculty and graduates of the metal design program at East Carolina University. Ebendorf's work combines exceptional craftsmanship, acquired through traditional training in gold- and silversmithing, with the inventive use of found objects and other alternative materials such as acrylic and ColorCore. "Objects of Affection" follows the evolution of Ebendorf's designs from Scandinavian modernism of his early work to his first use of found objects, including tintype photographs in the 1960s; juxtapositions of colored acrylic and precious metals in the 1970s; use of found newspaper and other textual elements in the 1980s; his pivotal incorporation of animal parts in the 1990s; and the remixing and further development of many of these approaches in the 21st century. **Delhom Gallery, Through June 8** - "The Delhom Service League: 50 Golden Years". The Delhom Service League (DSL) provided a half-century of generous sup-

continued on Page 48