

# NC Institutional Galleries

continued from Page 47



Work by Jo-Ann Morgan

ting themes, these stitched fabric pictures offer a soothing counterpoint to the harsh events of contemporary reality. If there is a message running throughout this work is "seeking comfort in a fraught world." Art can be a way to process events and experiences that are almost too much to bear. **Mar. 26 - May 18** - "Elaine Fleck: Interlacing Practices". A reception will be held on Mar. 28, from 6-8pm. "Interlacing Practices" presents a selection of paintings that are a rich blending of fabric combined with the vibrant color of oil paint. These complex surfaces and multi-layered works challenge the viewer to look beyond the ordinary and engage themselves in the story of what it means to be alive and rooted in the soul of living things. **Cary Arts Center Principal's Hall, Through Mar. 23** - "Lisa Carl". Carl says, "My paintings celebrate color, organic movement, inorganic stasis, and objects left behind. Encaustic paint is the perfect medium for these celebrations: its lush, translucent colors, the organic liquid and accretion patterns it creates, and the endless possibilities it offers for layering, incision, and incorporating objects. These works explore color and movement in numerous ways. Many are re-visions of photographs I've taken. Abstracted from their familiar figurative contexts, these pieces highlight the many ways in which human-made structures interact with and inform the organic landscape. Similarly, other works isolate found objects (rusted metal, wood, shells, stones), inviting the viewer to contemplate the singularity of the humble and mundane. **Mar. 26 - May 18** - "Sydney McBride". A reception will be held on Mar. 28, from 6-8pm. The inspiration for my artwork comes from reflections on my memories and the meaning and feelings that they evoke. Personal and family photographs are often used as references to create the imagery that reflects the memory's emotional significance and its impact on my own identity. Printmaking as a medium echoes the repetitive nature of memory recollection. **Cary Arts Center Display Cases, Through Mar. 23** - "Annabelle Stein". Stein says, "Color, texture and pattern have been key components of my artist toolbox, and these elements have always informed my work, whether fabric printing and design, and now cement sculpture. These latest pieces are playful experiments with forms inspired by natural objects, botanicals, light, formations." **Mar. 26 - May 18** - "Metals & Jewelry Artists". A reception will be held on Mar. 28, from 6-8pm. Hours: Mon.-Thur., 9am-10pm & Fri.-Sat., 9am-11pm. Contact: 919/469-4069 or at ([www.townofcary.org](http://www.townofcary.org)).

**Cary Gallery of Artists**, 200 S Academy St, Ste 120, Ashworth Square, Cary. **Ongoing** - The gallery offers high quality art in a variety of styles. Paintings, pencil and colored pencil artwork varies from traditional still lifes and landscapes to abstracts. Portraits of people or animals are available. Photographic work captures magnificent landscapes, small moments in life, portraits, and far away places. The pottery and clay art includes edgy handbuilt pieces, thought-provoking sculpted masks, and decorative and functional pottery that captures images of nature. Our jewelry artists provide a wide range of hand-crafted necklaces, earrings, bracelets and other ornaments from metals, stones, beads and fused glass. Our glass artist creates stained glass hangings, custom stained glass windows and fused glass art. You can also find unusual hand-made books and hand-painted porcelain both antique and new. Hours: Wed.&Thur., 11am-3pm and Fri.&Sat., 11am-5:30pm. Contact: 919/462-2035 or at ([www.carygalleryofartists.org](http://www.carygalleryofartists.org)).

**Herbert Young Community Center**, 101 Wilkinson Avenue, Cary. **Through Apr. 6** - "Seed of Hope". This group show is a diverse collection of visual art inspired by everlasting hope found in the Word of God. Hours: Mon.-Fri., 9am-10pm; and Sat., 9am-6pm. Contact: 919/4604965 or ([www.townofcary.org](http://www.townofcary.org)).

**Page-Walker Arts & History Center**, 119 Ambassador Loop, Cary. **Through Mar. 1** - "Eric McRay: Cultural Ambrosia". McRay, a Raleigh based artist, was born and raised in Washington, DC. McRay uses collage to explore visual storytelling while addressing the human figure as an entity of change in theatrical narratives. These chronicles are inspired by African American, Biblical, and art history, as well as pop culture. Yet, at the core are McRay's familial relationships. This continuum searches for personal and universal experiences. **Mar. 5 - May 10** - "Professional Art Quilters Alliance - South". A reception will be held on Mar. 28, from 6-8pm. Hours: Mon.-Thur., 10am-9:30pm; Fri., 10am-5pm; & Sat., 10am-1pm. (It is strongly advised that you call ahead about hours this space will be open.) Contact: 919/460-4963.

**Town Hall Gallery**, City of Cary Town Hall, 316 North Academy Street, Cary. **Through Apr. 4** - "Alexander Percy". Percy says, "We live in times of ambivalence daily, I take refuge in painting as a means of existential survival and a method of understanding. The oil paint and the palette knife become allies of my infinite artistic search and expression of ideas. Living the pandemic through painting has given me the opportunity to reconnect with feelings, emotions and uncertainties that we treasure for one reason or another. The time captured in each of the pieces reveals stages of uncertainty intrinsic to a state of mind hidden between colors. I am worthy and deserving of my sorrows, my joys, anger, sadness, unforgettable moments, every silent feeling and every lived experience that in turn allow me to explore the possibilities of color and its meaning, of the medium and its language, of expression and its domain". Hours: Mon.-Fri., 8am-5pm. Contact: 919/469-4061.

## Chapel Hill - Carrboro



Robert Henri, American, 1865-1929, Sylvester, 1914, oil on canvas. image: 32 x 26 in. (81.3 x 66 cm); frame: 39 1/4 x 33 1/4 in. (99.7 x 84.5 cm). Terra Foundation for American Art, Daniel J. Terra Art Acquisition Endowment Fund, 2017.2, L2023.2.4

**Ackland Art Museum**, UNC - Chapel Hill, Columbia & Franklin Streets, Chapel Hill. **Through May 11** - "Triple Take: Dialogues with the Terra Collection-in-Residence". The Ackland is fortunate to have American paintings on long-term loan from the Terra Foundation for American Art. These paintings are the centerpieces of the three sections of "Triple Take: Dialogues with the Terra Collection-in-Residence". Each section of about twenty objects has different curators, who have gathered works from the Ackland that connect in often unexpected ways with the Terra Foundation loans. This three-part exhibition begins with Lyonel Feininger's Denstedt (1917), a powerful and expressionistic view of a German village. This painting serves as the starting point for an exploration of the artist's achievements across his career, curated by Peter Nisbet. Dana Cowen explores themes of looking, the mirror, and privacy through Archibald Motley's Between Acts (1935). Ammi Phillips's Girl in a Red Dress (c. 1835) and Robert Henri's Sylvester (1914) anchor a selection of representations of children chosen by Lauren Turner and Carolyn Allmendinger. This final part of the exhibition explores how knowing or not knowing the names and biographical details of the people depicted can affect our experience of the artworks. **Through July 13** - "Processing Systems: Bonding by Sherrill Roland". In the exhibition, monumental square grids of multi-colored numbers dominate the exhibition space like giant sudoku puzzles. To create them, artist Sherrill Roland reclaims United States Federal and State Correctional Identification Numbers and repurposes them through what he considers to be a systematized portrait making technique. The grids on view act as logic exercises that scramble and rework the former correctional IDs of the artist and his father. The

resulting wall drawings create theoretical portraits of the two subjects. The shared system employed to create the two works emphasizes the various bonds shared by these family members at the same time that the formal qualities of the drawings evoke lone figures bound by cells. **Permanent Collection Galleries, Through Dec. 31, 2025** - At any one time, there are about 250 works of art from the Ackland's distinguished permanent collection on view. The displays cover many eras and cultures, including most of the Museum's collection areas: the Ancient Mediterranean, Africa, Asia, the Americas, and Europe. Occasional galleries present small selections of prints, drawings, photographs, and other light-sensitive works. You can search our online collection database and filter by works on view. Try saving your own collection of objects using the new "favorites" function! **Museum Store Gallery** (Franklin and Columbia Street), Store hours: Mon.-Sat., 10am-5:30pm & Sun., noon-5pm. Museum Hours: Wed.-Sat., 1-5pm. Contact: 919/966-5736 or at ([www.ackland.org](http://www.ackland.org)).

**FRANK**, 370 E Main St. Carrboro, Carrboro's East Main Square, next to Hickory Tavern and the Hampton by Hilton hotel, Chapel Hill. **Ongoing** - Featuring work from over 70 artists, Frank offers more than you'd expect from an art gallery. Frank is a collective, founded by the area's finest artists working together to open the door for creative innovation in the arts. Hours: Tue.-Sat., noon-5pm or by appt. Contact: Contact: 919/636-4135 or at ([www.frankisart.com](http://www.frankisart.com)).

**The ArtsCenter**, 300-G East Main Street, Carrboro. **Ongoing** - Nurturing the arts in the triangle since 1974 through performance, education and exhibition. Hours: Mon.-Fri., 9am-9pm and Sat. 10am-5pm. Contact: 919/929-2787 or at (<http://artscenterlive.org>).

**The Sonja Haynes Stone Center for Black Culture and History**, UNC-Chapel Hill, 150 South Road, Chapel Hill. **Ongoing** - Dedicated in 2004, the Sonja Haynes Stone Center houses classrooms, a library, an art gallery and museum, an auditorium, and a dance studio. More than ninety-five percent of the Center's cost was met through private gifts, contributed by more than fifteen-hundred donors. Hours: Mon.-Fri., 8am-5pm. Contact: 919/962-9001, e-mail to ([stonecenter@unc.edu](mailto:stonecenter@unc.edu)) or visit (<http://sonjahaynesstonectr.unc.edu/>).

ALTERNATE ART SPACES - Chapel Hill **Horace Williams House**, 610 E. Rosemary Street, Chapel Hill. **Ongoing** - The Horace Williams House is the only historic house open to the public in Chapel Hill. The house retains its original architecture including woodwork, floors, ceilings, and mantles. They have a collection of antique furniture, including a set of four chairs and a newly acquired settee that once belonged to Horace Williams. They offer self-guided tours of the house, including an exhibit about the history of those who lived there. They also have a number of self-guided walking tours of the surrounding community, which you can pick up free of charge at the Horace Williams House. Explore the historic district along East Franklin Street, wander the Old Chapel Hill Cemetery, and more. Hours: Thur. & Fri., noon-4pm and Sun., 2-5pm. Contact: 919/245-4320 or e-mail to ([info@visit-chapelhill.org](mailto:info@visit-chapelhill.org)).

**North Carolina Botanical Garden**, 100 Old Mason Farm Road, Chapel Hill. **DeBerry Gallery for Botanical Art & Illustration, Through Mar. 2** - "Birds of North Carolina: A Community Photo Exhibit". This exhibit features nearly 300 photos of wild birds in our state, submitted by members of the public. It's part of our Bird Alliance. Hours: Tue.-Sat., 9am-5pm; Sat., 9am-5pm; & Sun., 1-5pm. Contact: 919/962-0522 or at (<http://ncbg.unc.edu>).

## Charlotte Area

**South End Art Gallery Crawl - From 5-8pm on the 1st Friday of each month.**

**Bechtler Museum of Modern Art**, Levine Center for the Arts, 420 South Tryon St., Charlotte. **Through Mar. 3** - "Chance Encounters: Surrealism Then and Now." Surrealism was an artistic and literary movement formed in Paris in 1924 that emphasized the fantastical, dream imagery, and subconscious thought. Privileging experimentation and uninhibited modes of expression, Surrealism produced radical new techniques and visual forms that continue to inspire artists today. Celebrating the 100th anniversary of the publication of the Surrealist Manifesto, the Bechtler's new exhibition, Chance Encounters: Surrealism Then and Now, pairs examples of historical Surrealism from the museum's collection with works by contemporary artists whose practices extend the legacies of Surrealist exploration. Paying tribute to the inclusive and international scope of the movement, the exhibition includes Max Ernst, Meret Oppenheim, Rufino Tamayo, alongside Heri Dono and Naudine Pierre, and includes

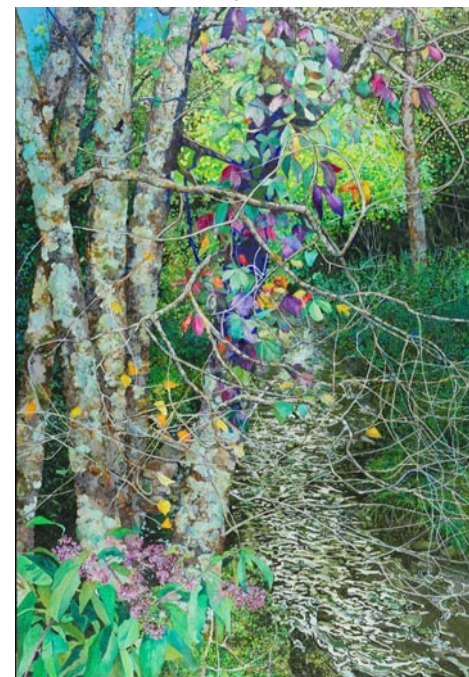
loans from local private and public collections. **Ongoing** - The Bechtler Museum of Modern Art is named after the family of Andreas Bechtler, a Charlotte resident and native of Switzerland who assembled and inherited a collection of more than 1,400 artworks created by major figures of 20th-century modernism and donated it to the public trust. The Bechtler collection comprises artworks by seminal figures such as Alberto Giacometti, Joan Miro, Jean Tinguely, Max Ernst, Andy Warhol, Alexander Calder, Le Corbusier, Sol LeWitt, Edgar Degas, Nicolas de Stael, Barbara Hepworth and Picasso. Only a handful of the artworks in the Bechtler collection have been on public view in the United States. Admission: Yes. Hours: Mon., Wed.-Sat., 10am-5pm; Sun. noon-5pm; and open until 9pm the 1st. and 3rd. Fri. of each month. Contact: 704/353-9200 or at ([www.bechtler.org](http://www.bechtler.org)).

**Bill and Patty Gorelick Gallery**, at Central Piedmont Community College's Central Campus, North Classroom, 1320 Sam Ryburn Walk, Charlotte. **Through June 30** - Featuring works by Tom Thoun and Amy St. Aubin. Thoun's artwork focuses on his hospital experience after a cerebellar stroke. For his self prescribed occupational therapy, he took on relearning many traditional visual art concepts, such as ancient Egyptian and Greek body proportions as well as revisiting color theory. His color study focused on harmonious recipes found on the "Pocket Color Wheel". Aubin's artwork represents an evolution of her practice over the past fifteen years, focusing on the figure as a portal between landscapes. She explores the interaction between the figure and the background, pushing the figure into the foreground or placing it within the landscape to manipulate depth. This series continues to incorporate collage and cold wax, expanding across different surfaces. In these pieces, the figure becomes either a presence or an absence, reflecting the spaces left after physical loss. Her work conveys the disbelief that what once was, is no longer—but still lingers. Hours: open while campus is open, but reservations help us alert our security team to visitors, provide directions to the galleries. Contact: 704/330-6869 or e-mail to ([foundation@cpcc.edu](mailto:foundation@cpcc.edu)) to schedule an appointment. For directions to Central Piedmont's campuses, visit ([cpcc.edu/locations](http://cpcc.edu/locations)).

**Bliss Gallery**, established by Holy Angels, 25 N. Main Street, Belmont. **Ongoing** - Holy Angels established Bliss Gallery to offer persons who are differently able the opportunity to share creative abilities and showcase their art alongside the works of guest artists during special exhibitions. Hours: Hours: Wed.-Sat., noon-4pm. Contact: Harmony Heslop at 704/280-9475, e-mail at ([blissgallery@holyangelsnc.org](mailto:blissgallery@holyangelsnc.org)) or visit ([www.holyangelsnc.org](http://www.holyangelsnc.org)).

**Charlotte Art League Gallery & Studios**, 4237 Raleigh Street, Charlotte. **Grand Hall, T - "** **Ongoing** - CAL houses one of the area's largest collections of local professional and emerging artists, offering affordable fine art in a variety of styles and media: acrylics, oil, pastel, watercolor, mixed media, photography and sculpture, and fiber art. Tour studios of working artists. Admission: Free. Hours: Fri. & Sat., 1-7pm and Sun., 1-5pm. Contact: 704/376-2787 or at ([www.charlotteartleague.org](http://www.charlotteartleague.org)).

**Cornelius Arts Center Gallery**, 19725 Oak Street, Cornelius. **Ongoing** - The Arts Center Gallery is under the direction of the future Cain Center for the Arts. Hours: Mon.-Fri., 10am-4pm. Contact: 704/896-8823, 980/689-3101 or visit (<https://cainarts.org/>).



Work by Elizabeth Bradford

**Davidson College**, Belk Visual Arts Center, 315 North Main and Griffith Streets, Davidson. **Van Every & Smith Galleries, Through Apr. 9** - "Warp Weft Water Weeds," featuring works

continued on Page 49