

## Southern Highland Craft Guild in Asheville, NC, Offers Glass, Metal, and Clay Day - Apr. 5, 2025

The Southern Highland Craft Guild in Asheville, NC, will present its annual Glass, Metal, and Clay Day, at the Folk Art Center, on Apr. 5, 2025, from 10am-4pm.

The Southern Highland Craft Guild kicks off its 2025 Educational Event Series with Glass, Metal, and Clay Day, a free, hands-on event celebrating traditional craft techniques and inviting the Asheville community to connect with master artisans. This year's event combines the Guild's popular Glass & Metal Day and Clay Day, offering a unique opportunity to experience a diverse range of craft processes.

From 10am to 4pm, visitors can watch over a dozen Guild members demonstrate their skills in glassblowing, blacksmithing, metalworking, clay-making, and more in the Folk Art Center's auditorium. Live demonstrations will include knife making, repoussé, raku firing, wheel throwing, hand-building clay, soldering stained glass, and metal piercing, among other techniques.



Tina Curry in a clay demonstration

"We're thrilled to host this event, which showcases the creativity of our Guild members and provides the community with a chance to engage with the craftsmanship behind these handmade goods," says Janet Wiseman, Education Director for the Southern Highland Craft Guild. "Our members volunteer their time to inspire others, and we hope visitors leave feeling motivated to explore their creative potential."



A metal work demonstration

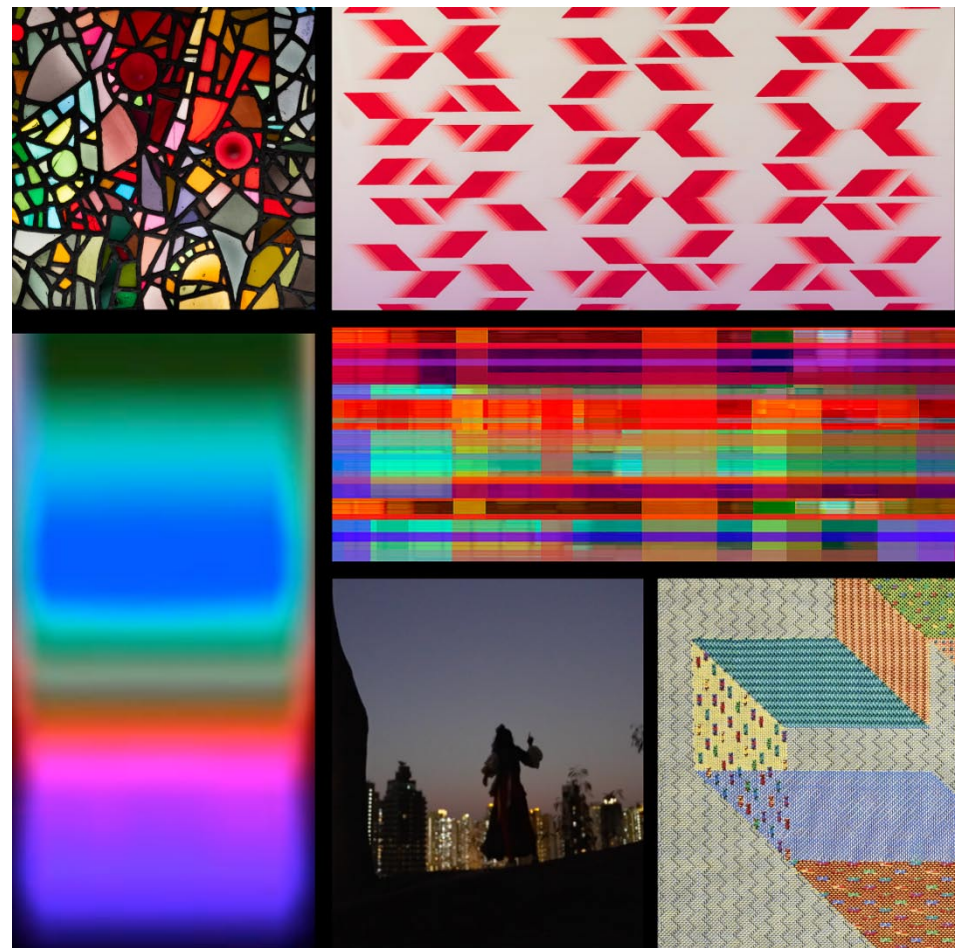
As one of the nation's oldest craft organizations, the Southern Highland Craft Guild has been dedicated to promoting the value of handmade craftsmanship for nearly 100 years. Through educational events like Glass, Metal, and Clay Day, the Guild creates a space for artisans to share their process, helping the public understand the artistry behind the work they purchase. These events also foster greater connections between buyers and makers, supporting the growth and sustainability of the craft community.

The Folk Art Center, located on the scenic Blue Ridge Parkway, serves as the Guild's headquarters and is home to three galleries, a craft shop, a library, and a Blue Ridge Parkway information desk. It is an accessible and welcoming venue for visitors of all ages.

Founded in 1930, the Southern Highland Craft Guild is a non-profit organization that supports the artisans of the Southern Highlands through shared resources, education, and marketing opportunities. The Guild is committed to preserving and promoting traditional crafts, fostering creative communities, and educating the public about the value of handmade art. The Folk Art Center is an authorized concessioner of the National Park Service, Department of the Interior.

For further information check our NC Institutional Gallery listings, call the Guild at 828/298-7928 or e-mail Millie Davis at (millie@craftguild.org).

## Black Mountain College Museum + Arts Center in Asheville, NC, Offers New Exhibition



From left to right, top to bottom: W.P. Jennerjahn, "Untitled" (Stained Glass Window), c. 1950s. Collection of BMCM+AC; Sewell Sillman, "109 Acrobats", 1985. Collection of BMCM+AC; Richard Garett, "Perceptual Series", 2019; Deanna Sirlin, "Unfolding", 2024; Jennie MaryTai Liu, "Interstate", 2022; and Susie Taylor, "Persona", 2025.

Black Mountain College Museum + Arts Center in Asheville, NC, will present *viewshed*, on view from Apr. 4 through Aug. 16, 2025. A reception will be held on Apr. 4, from 5:30-8pm.

*viewshed*, is an exhibition that illuminates the enduring impact of Black Mountain College (BMC) as a crucible of artistic experimentation and exchange. The exhibition traces the transmission of ideas across generations, exploring how BMC's radical pedagogical approaches continue to shape contemporary artistic practice.

The exhibition stages a dynamic dialogue between past and present, featuring contemporary artists Richard Garett, Jennie MaryTai Liu, Deanna Sirlin, and Susie Taylor alongside seminal BMC figures such as Dorothea Rockburne,

Sewell (Si) Sillman, and Jacob Lawrence. By engaging with transparency, structure, color, collaboration, and expanded forms, *viewshed* brings into focus the porous boundaries between disciplines, underscoring BMC's legacy as an incubator of radical experimentation and interdisciplinary engagement.

Curated by Alice Sebrell and Jeff Arnal, *viewshed* unfolds as a sensorial and conceptual investigation into the shifting terrain of artistic influence. The exhibition highlights works that span painting, textile, sound, and performance, inviting viewers to consider the ways in which artistic methodologies evolve and reverberate across time. At its core, *viewshed* underscores the ways in which BMC's experimental ethos continues to inspire art-

[continued on Page 25](#)

Every once in a while I feel like just filling one of these spaces with a kind of nothingness. You know as if nobody reads what's in these spaces anyway. So if one time I said something like the first person to read this and sends me an e-mail to (info@carolinaarts.com) during the month of April they'll get a free 1/4 ad in our May 2025 issue or the month that is most useful for them. But who reads these space fillers anyway? Not many I bet.