

SC Institutional Galleries

continued from Page 39

- LOOM is a multi-functional facility in the heart of historic downtown Fort Mill that provides: Collaborative coworking spaces for at-home, mobile and remote workers; Learning and networking opportunities for the greater community; and a variety of meeting and special event spaces to benefit your business or group. Gallery hours: Mon.-Fri., 9am-4pm. Contact: 803/548-5666 or at (<http://loomcoworking.com>).

Gaffney

Cherokee Alliance of Visual Artists Gallery, 210 West Frederick Street, located in the former Old Post Office building one street over from the Main Street with the City of Gaffney Visitors Center, Gaffney. **Ongoing** - Featuring works in a variety of media by Cherokee County artists. Hours: Mon.-Thur., from 8:30am-5pm and Fri., from 8:30am-3:45pm. Contact: call Shelba Cook at 864/490-0609 or call the Visitors Center at 864/487-6244.

Georgetown

The Rice Museum, 633 Front Street, Georgetown. **Ongoing** - Georgetown's oldest destination for history, art and culture. The Museum Complex consists of the Old Town Clock and the Kaminski Hardware Building. Admission is free. The Kaminski Hardware building houses the oldest recovered wooden boat in America, the Brown's Ferry Vessel, along with 2 floors of displays and history, as well as, local gifts and the Prevost Art Gallery. The Old Town Clock Building was once used as an open market and later as the City's Town Hall. Tours are available daily which include both historic buildings. Hours: Tue.-Sat., 11am-4pm. Contact: at (ricemuseum.org).



View inside The South Carolina Maritime Museum

The South Carolina Maritime Museum, 729 Front St, Georgetown. **Ongoing** - In 1996, the Harbor Historical Association launched a dream to create a museum that would celebrate the maritime history of South Carolina and Georgetown, the state's second largest port. In 2011, with community support, the South Carolina Maritime Museum opened on the waterfront in historic downtown Georgetown. Home to the prized Fresnel lens of the old North Island lighthouse, our mission is to create enjoyable experiences for both young people and adults by featuring exhibits, programs and events related to South Carolina's rich and remarkable maritime history. Admission: Free, donations appreciated. Hours: Mon.-Sat., 11am-5pm. Contact: 843/520-0111 or at (sccaritimuseum.org).

Greenville

Throughout Greenville. Ongoing - "Public Art in Greenville". The City of Greenville's long-standing support for public art is a testament to our belief that the arts enhance the quality of life for residents and visitors, and strengthen our community - socially, economically, and culturally. The City's permanent collection includes more than 120 works of public art (including sculptures, statues, murals, architectural elements/structures, historic pieces, etc.). Ongoing efforts to enhance the built environment through public art and creative placemaking contribute to the area's unique aesthetic identity, and create platforms for community engagement and dialogue. For more info visit (<https://storymaps.arcgis.com/collections/4a3096011985490b971d3f778466c9b4>).

Downtown Greenville - "First Fridays," featuring a gallery crawl presented on the first Fri, of the month from 6-9pm. Visit galleries throughout the downtown area. For info: (www.fristfridaysonline.com).

Greenville Center for Creative Arts, 25 Draper Street, Greenville. **Main Gallery, Apr. 4 - May 28** - "Beyond the Edge," featuring works by Lindsay Godin & Ana Vizcarra Rankin. **Community Gallery, Through Apr. 23** - "Sign of the Times," featuring works by Emma Hartman. "Signs of the Times" showcases local Greenville artist Emma Hartman's paintings and drawings that explore themes of apocalypse, redemption, and resilience. The exhibition features gouache and



Work by Emma Hartman

acrylic paintings alongside graphite drawings on paper. Influenced by Southern Gothic literature and contemporary imagery, Hartman's work offers a new perspective on humanity's enduring fascination with the end of days. Angels appear as messengers of looming change, prompting reflection on both destruction and renewal. **The Shop at GCCA** - In celebration of our eighth anniversary, Greenville Center for Creative Arts is thrilled to announce the opening of our official gift shop! As another opportunity for GCCA to support local artists, visitors can shop for consigned artworks from Greenville-based artists including prints, small originals, jewelry, pottery, and more! The Shop at GCCA will also have novelty merchandise for sale so you can show your love for Greenville arts everywhere you go! **Ongoing** - Home to 16 studio artists. Hours: Wed.-Fri., 1-5pm. Contact: call 864/735-3948 or at (www.artcentergreenville.org).



Work by Corrie McCallum (1914 - 2009)

Greenville County Museum of Art, 420 College Street, Greenville. **Through May 25** - "Bob Ray: Suit Yourself", Bob Ray (b. 1952) works in a variety of media, including drawing, painting, collage, sculpture, and even correspondence and performance. Born in Warrensburg, Missouri, just east of Kansas City, he now lives with his wife in the small town of Washington in eastern North Carolina. Guest-curated by Mark Sloan, "Bob Ray: Suit Yourself" features a selection of the artist's most recent paintings and drawings. Inspired by the Abstract Expressionist painters, Ray also draws from the Dada and Fluxus movements. Each of Ray's artworks offers evidence of its own evolution. **Ongoing** - "Three Mighty Gamecocks," features works in various media by Corrie McCallum (1914 - 2009), Jasper Johns (born 1930), and Grainger McKoy (born 1947), all of whom graduated from high school in Sumter, SC. McCallum, a Sumter native, graduated in 1932 from Sumter High School, after which she enrolled at the University of South Carolina, and later studied at the Boston Museum School of Art. In addition to sustaining her career as a painter and printmaker, McCallum pioneered art education in the South, teaching at the Gibbs Art Gallery, Telfair Academy in Savannah, Newberry College, and the College of Charleston. In 1960, she became the first professional Curator of Art Education at the Gibbs. Johns graduated as the valedictorian of his 1947 class at Edmunds High School, which was known as Sumter High School until the 1939-1940 school year. After attending the University of South Carolina, he relocated to New York City, where he gained prominence in the mid-1950s for his paintings of American flags, targets, alphabets, and numerals ("things the mind already knows," as Johns famously said). He is considered one of the most influential painters of the Post-World War era and America's preeminent living artist. McKoy graduated in 1965 from Edmunds High and has spent most of his life in Sumter. After studying architecture and biology at Clemson

University, he joined his knowledge of the sciences with his uncanny skills as a carver, draftsman, and painter to achieve unique sculptures that fool the eye and defy gravity. His works are found in major public and private collections, most notably at Brookgreen Gardens and the Greenville County Museum of Art. **Ongoing** - Watermedia in the Age of Wyeth. When he was only 20, Andrew Wyeth (1917 - 2009) enjoyed a sold-out exhibition of his watercolors at New York City's Macbeth Gallery in 1937. The young artist was heralded for revitalizing the medium, and his career was launched. Over the next 72 years, as his methods evolved from broad abstracted washes of color to the intricate hatching of his signature drybrush technique, Wyeth firmly established his mastery of modern watermedia, which may include watercolor, gouache, tempera, acrylic, or ink (and combinations thereof). Selected from the GCMA permanent collection, this exhibition offers the opportunity to witness Andrew Wyeth's artistic evolution over time and invites comparison with other accomplished watermedia luminaries who worked during Wyeth's life. **Ongoing** - "Art and Artists of South Carolina: For Real". The GCMA's newest exhibition is drawn from the Museum's permanent collection. Celebrate the Palmetto State with a diverse selection of watercolors by Mary Whyte and Stephen Scott Young, sculptures carved by Grainger McKoy, and varied South Carolina landscapes. **Ongoing** - "Collection Highlights: African-American Art," features 17 works by as many artists. At the forefront of the exhibition is a realistic sculpture by John Wilson, whose monumental bronze head of Martin Luther King, Jr. captures the dignity and strength of the civil rights leader. Post-World War II non-objective painting is reflected in works by Beauford Delaney, Hale Woodruff, and Frank Wimberley. A lighter, but no less powerful, touch is embodied in a brilliant Color Field painting by Thomas Sills. The exhibition also includes evocative examples by Romare Bearden, Frederick Brown, Jacob Lawrence, Betye Saar, Merton Simpson, and Bob Thompson. **Ongoing** - "Andrew Wyeth: Running with the Land". This stunning retrospective showcases 59 works on paper, capturing Wyeth's preference for painting intimate subjects that were tied to the homes established by his father in both Chadds Ford, Pennsylvania, and Cushing, Maine. Wyeth drew inspiration from the distinctive characteristics and denizens of these locations, revealing universal traits in his depictions of landscapes, objects, and people. **Ongoing** - "All in the Family (Connections)," which assembles work by three generations of Wyeths--the first family of American painting--taking advantage of several rarely exhibited loans from a private collection and complementing the exhibition "Andrew Wyeth: Running with the Land". Admission: Free. Hours: Wed.-Sat., 10am-6pm and Sun., 1-5pm. Contact: 864/271-7570 or at (www.gcma.org).

Lipscomb Gallery, at South Carolina Governor's School for the Arts and Humanities, 15 University St., Greenville. **Ongoing** - We feature several exhibitions throughout each year - our own students and faculty, plus many guest artists. Hours: Mon.-Fri., 10am-4:30pm. Visitors are asked to sign in at the Administration Building's front desk before entering campus. Contact: 864/282-3777 or 864/282-3705.

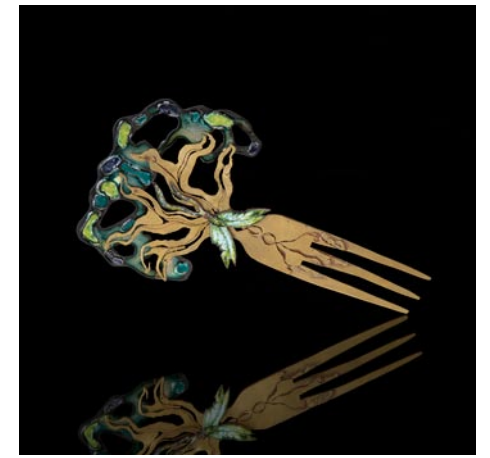
Metropolitan Arts Council, 16 Augusta Street, Greenville. **Dolly F. Pardi Gallery, Through Apr. 25** - "Visual & Verse," an exhibition of poetry and art. **Ongoing** - Featuring works by Greenville area artists. Hours: Mon.-Fri., 9am-5pm. Contact: 864/467-3132, or at (www.greenvillearts.com).

Museum & Gallery, Bob Jones University, Wade Hampton Boulevard, Greenville. **Ongoing** - "Likely and Unlikely Pairings," featuring a fascinating juxtaposition of art and mundane objects revealing a variety of viewpoints. Through this special comparative display, the unique presentation serves as an engaging tool for all viewers interested in understanding the many facets of art, culture, and thought. **Ongoing** - Permanent exhibition of the finest collection of religious art in America, including works by Rubens, Botticelli, and Van Dyck. Offering visitors a 60-minute audio-guided tour of over 40 favored works for a modest fee. Hours: Tue.-Sun., 2-5pm. Contact: 864/242-5100, Ext. 1050 or at (www.bjumg.org).

Thompson Gallery, Thomas Anderson Roe Art Building, Furman University, Greenville. **Apr. 7 - May 9** - "Senior Show". A reception will be held on Apr. 11. Art students from the class of 2025 will showcase their collections. The dates and times of artist receptions to be scheduled, visit the Thompson Gallery. Hours: M-F, 9am-5pm. Contact: Stephen Mandravelis by e-mail at (stephen.mandravelis@furman.edu), or call 864/294-2282.

Upcountry History Museum, 540 Buncombe Street, Greenville. **Through May 25** - "Clyde Butcher's America the Beautiful". Acclaimed

photographer Clyde Butcher has spent more than 50 years capturing some of America's most unique and beautiful landscapes, from the Redwood forests of California to the Everglade swamps of Florida. Butcher majestically captures the public natural lands set aside by the Federal and State governments for the enjoyment, education, and inspiration of this and future generations. **Ongoing** - Greenville County connects people, history, and culture. Through our collections, programs, and exhibitions the Museum preserves and interprets historical subjects pertaining to the Upcountry of South Carolina. Spanning two floors of permanent and changing exhibit galleries, the Museum tells the story of the Upcountry and features a year-round calendar of changing exhibits and program that dive deeper into history, art, science, and culture. Uncover the Upcountry's secrets. We invite you to step inside and discover the world and the Upcountry's role in it - as it was, as it is, and as it can be. Admission: Yes. Hours: Tue.-Sat., 10am-5pm & Sun., 1-5pm. Contact: 864/467-3100 or e-mail to (info@upcountryhistory.org).



Work by Jayla Jenkins, 2024 Best in Show

Visual Arts Institute, on the Greer Campus of Greenville Technical College about 4 miles north of Greer on Highway 290, Locust Hill Road, Taylors. **Benson Campus Galleries, Through Apr. 17** - "35th Annual Upstate High School Art Exhibition," juried by Jim Campbell, a painter and printmaker who retired more than a decade ago from the Greenville County Fine Arts Center, where he taught for 32 years. The exhibition is presented by Greenville Technical College's Department of Visual Arts. The Awards Presentation is on Wednesday, Apr. 16, beginning at 6:30pm. All Upstate High School art programs are invited to participate so "AUHSAE" is a true survey of the quality and variety of visual arts in Upstate high schools. Hours: Mon.-Thur., 9am-7pm & Fri., 9am-2pm. Contact: Fleming Markel, by e-mail at (fleming.markel@gvltec.edu); Gallery Director or Pat Owens by e-mail at (pat.owens@gvltec.edu) or call 864/250-3051.

ALTERNATE ART SPACES - Greenville **Centre Stage Theatre Gallery**, 501 River Street, Greenville. **Through Apr. 18** - "BE//MUSE," featuring works by Kim Dick. **Ongoing** - Featuring works by visual art members of MAC. Exhibits are offered in collaboration with the Metropolitan Arts Council. Hours: Tue.-Thur., 2-5pm & 2 hr. prior to shows. Contact: MAC at 864/467-3132, at (www.greenvillearts.com/mac-featured-galleries/).

Greenwood

Arts Center of Greenwood, at the Federal Building, 120 Main Street, Greenwood. **Ongoing** - Featuring works by local and regional artists. Hours: Mon.-Fri., 10am-5pm & Sat., 10am-3pm. Contact: 864/388-7800 or at (www.emeraldtriangle.us/arts-center).

Lander University Fine Art Gallery, Cultural Center Building, 320 Stanley Ave., Greenwood. **Ongoing** - The Lander University Fine Art Gallery features a variety of exhibits throughout the year. The gallery features national and regional artist, as well as student and faculty work showcasing painting, sculpture, ceramics, graphic design, and photography. Hours: Mon.-Fri., 10am-4pm. Contact: call Jon Holloway at 864/388-8810 or at (<https://www.facebook.com/pages/category/Art-Gallery/Lander-University-Fine-Art-Gallery-166498067092236/>).

Greer

Edward R. Driggers City of Greer Center for the Arts, 804 Trade St., Greer. **Ongoing** - Featuring artists studios. Hours: Tue., noon-8pm; Fri., 9am-3pm; & Sat., 10am-2pm. Contact: call Sara Odem at 864/5383 or at (<http://greerculturalarts.com/>).

Hartsville

Black Creek Arts Center, 116 West College Ave., Hartsville. **Ongoing** - Featuring works by local and regional artists. Hours: Tue.-Thur., 10am-1pm and 2-5pm; Fri., 10am-2pm and 1st

continued on Page 41