

NC Institutional Galleries

continued from Page 61

demid year. Generally the galleries are open from mid-August to mid-May and are occasionally open for receptions and events during the summer months. Hours: Mon.-Thur., 10am-4pm; Fri., 10am-2pm or by appt. Contact: contact Maureen O'Neill, director of exhibitions, at 252/399-6477 or e-mail to (artgalleries@barton.edu).

Truist Events Gallery, Wilson Arts Center, 204 Nash Street S, Wilson. **Ongoing** - We feature a variety of work from local and regionally known artists at the Wilson Arts Center, rotating work approximately every two months. All gallery exhibits and artist receptions are free and open to the public! Visit our Gallery Shop at the Wilson Arts Center, featuring a variety of handmade and one-of-a-kind treasures from local and regional artists! There are two free parking lots behind the Wilson Arts Center: The Colony Lot (Lot #12) with entrance off Barnes Street and Lot #17 with an entrance off Douglas Street. Hours: Tue.-Sat., 10am-5pm. Contact: 252/291-4329 or at (wilsonarts.com).

Vollis Simpson Whirligig Park, 301 S. Goldsboro Street in downtown Wilson. **Ongoing** - The two-acre park features 30 of Vollis Simpson's whirligigs - including some of the largest in his life's work. Visitors will never be at a loss for something to do at the park. A central lawn amphitheater where everything from music to film engages audiences. The park shelter hosts the Wilson Farmers & Artisan Market, educational programs, and family fun activities. Benches, tables and chairs invite picnicking, reading, or just enjoying art and nature. Practice Tai chi, have a picnic or a family reunion, play flashlight tag among the reflective whirligigs the possibilities are endless! There is free public parking on Goldsboro Street just a little past the Whirligig Park and there is additional parking along Douglas Street. The Whirligig Festival is usually held the first weekend in November in Historic Downtown Wilson. Admission: Free. Hours: open daily, including holidays, from 5am to midnight. Contact: 252/360-4150 or at (wilsonwhirligigpark.org).

Vollis Simpson Whirligig Park Museum & Gift Shop, 230 Goldsboro Street SW, Suite 201, Wilson. **Ongoing** - The Vollis Simpson Whirligig Park Museum & Gift Shop is directly across Goldsboro Street from the Whirligig Park. Descriptive panels and a video presentation tell the story of Vollis Simpson, the creator of the massive, colorful kinetic sculptures that spin in the slightest breeze and delight visitors of all ages. Highlights include two original whirligigs, one of which offers a photo opportunity showing the reflective properties of the 'gig. The gift shop includes art, wearables, toys, and souvenirs of the Whirligig Park and Historic Downtown Wilson." Admission: Free. Hours: Tue. - Sat., 10am-5pm. Contact: 252/674-1352.

Winston-Salem



Work by Betti Pettinati Longinotti

Artworks Gallery, 564 N. Trade Street, Winston-Salem. **Through Apr. 26** - "Marion Adams: Piedmont Wildlife" and Betti Pettinati Longinotti: Cradling the Divine: A Tree Study. A reception will be held on Apr. 4, from 7-9pm, during the DADA Gallery Hop. On Apr. 18, from 7-9pm Art Crush. Marion Adams has returned to her favorite subject matter: wildlife. Her gardens and woods teem with creatures. Larger animals are predictable and easy to spot. Bluejays arrive in pairs to feed off the hollies. Betti Pettinati Longinotti shares a series of gel transfer prints of her "Cradling the Divine: Tree Study", a contemplative exploration. "I love and enjoy nature - flowers, trees, plants, and see the face of God in these created items. **Ongoing** - The gallery is the longest running cooperative gallery established by artists for artist members, showing 12 exhibits per year

in the heart of Winston-Salem's Art District. Approx. 21 artists show their work in mediums such as painting, watercolor, drawing, photography, sculpture, encaustic wax, and digital art. The gallery features the work of Marion Adams, Wiley Akers, Woodie Anderson, Mary Beth Blackwell-Chapman, Owens Daniels, Chris Flory, Jim Gemma, Don Green, Alix Hitchcock, Karen Moran Kopf, Lea Lackey-Zachmann, Nanu LaRosee, Barbara Rizza Mellin, Seth Moskowitz, Wendell Myers, Katherine Mahler, Diane Nations, Betti Pettinati-Longinotti, Susan Smoot, Jessica Tefft, Kimberly Varnadoe, and Mona Wu, as well as Associate Members: Kate Magruder and Beverly Noyes. Hours: Wed.-Sat., 11am-5pm & Sun. 1-4pm or by appt. Contact: 336/723-5890 or at (www.artworksgallery.org).

Associated Artists, The Milton Rhodes Center for the Arts, 251 North Spruce Street, Winston-Salem. **Ongoing** - AAWS is located in the Milton Rhodes Center for the Arts centered in the heart of downtown Winston-Salem and features a variety of exhibits each year. Our primary gallery is the Womble Carlyle Gallery which boasts approximately 1800 square feet of flexible exhibition space so our artists can exhibit anything they create; from small intimate paintings to large instillation works we have the space to show it. All new members are Associate Members and may participate in Associate Member shows, All-Member shows, and our extensive Community Exhibits program that gets our artists work into businesses all around Winston-Salem. Hours: Mon.-Fri., 9am-9pm and Sat., 9am-4pm. Contact: 336/747-1463 or at (www.AssociatedArtists.org).

Delta Arts Center, 2611 New Walkertown Rd., Winston-Salem. **Ongoing** - Delta Fine Arts, Inc. was established in 1972 as an independent, non-profit by the W-S graduate chapter of Delta Sigma Theta Sorority, a national organization of African American college women founded in 1913 whose principal purposes and aims are to engage in cultural, educational and public service activities. Since its beginning, Delta Fine Arts has provided unique cultural and educational programming through a year-round program of exhibitions, classes, workshops, lectures, films, performances, and special projects for youth, adults, and the elderly in the areas of visual arts, music, literature, history and folk arts. Hours: Tue.-Sat., 11am-3pm, closed every 3rd Sat. Contact: 336/722-2625 or at (http://deltaartscenter.org/).

4th Dimension Gallery, Commerce Plaza, 411 W. Fourth St., downstairs from Cat's Corner, Winston-Salem. **Ongoing** - Featuring works by art students from Winston-Salem's colleges and universities - the NC School of the Arts, Salem College, Wake Forest University and Winston-Salem State University. Hours: Fri., 5-8pm & Sat., 5-8pm. Contact: 336/249-0418.

North Carolina Museum of Art, Winston-Salem (former SECCA), 750 Marguerite Drive, Winston-Salem. **Main Gallery, Through July 20** - "David LaChapelle: Dear Sonja," a retrospective exhibition spanning four decades of the artist's career. This special retrospective exhibition features more than 80 works spanning 40 years of the artist's career. David LaChapelle was born in Connecticut in 1963 and attended high school at the North Carolina School of the Arts in Winston-Salem. Originally enrolled as a painting student with a reverence for art history, he developed his analog photograph-editing technique by hand painting negatives to achieve an abstract spectrum of color before processing his film. At age seventeen LaChapelle moved to New York City. Following his first photography show at 303 Gallery, he was hired by Andy Warhol to work at "Interview" magazine. Through his mastery of color, unique composition, and imaginative narratives, LaChapelle began to expand the genre of photography. By 1997 the New York Times predicted he "is certain to influence the work of a new generation ... in the same way that Mr. [Richard] Avedon pioneered so much of what is familiar today" in portrait and fashion photography. **Potter Gallery, Through May 18** - "Internal Review: NCMA Staff Exhibition". The exhibiting artists represent almost every department at the NCMA across both campuses in Raleigh and Winston-Salem. The exhibition spans genres and mediums, from works on paper to sculpture, from photography to music. Much like the state of North Carolina itself, this exhibition brings together a diverse range of talents, backgrounds, and interests in ways that encourage conversation, promote creativity, and build community. "We are very proud to host the staff exhibition," said William Carpenter, executive director of the NCMA Winston-Salem. "The history of our institution - from downtown galleries through almost 50 years as the Southeastern Center for

Contemporary Art - is one of supporting and promoting artists from across the state and region. This exhibition showcases the many talented and creative folks who make the museum a state treasure." The exhibition will be accompanied by a slate of programs, performances, and tours created and delivered by the museum staff.

Ongoing - Founded in 1956, the Southeastern Center for Contemporary Art offers a front-row seat to the art of our time. Through visual art exhibitions, education, music, film, dance and theater, SECCA starts conversations that engage diverse communities and perspectives. SECCA is an affiliate of the North Carolina Museum of Art and a division of the NC Department of Natural & Cultural Resources. SECCA receives operational funding from The Arts Council of Winston-Salem and Forsyth County. Additional funding is provided by the James G. Hanes Memorial Fund. Hours: Tue.-Sat., 10am-5pm, Thur. till 8pm; Sun., 1-5 pm, and closed Mon. & state holidays. Admission is free. Contact: 336/725-1904 or at (www.secca.org).

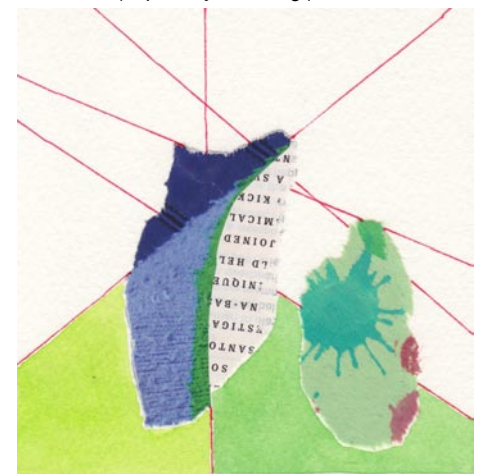
Piedmont Craftsmen Gallery, 601 North Trade Street, Winston-Salem. **Ongoing** - Featuring fine art crafts by over 350 of the best artisans of the Southeast. Hours: Tue.-Fri., 10:30am-5pm & Sat., 11am-4pm. Contact: 336/725-1516 or at (www.piedmontcraftsmen.org).

Red Dog Gallery/Art for Arts Sake (AFAS), 630 N. Liberty Street, Winston-Salem. **Ongoing** - We initiate and/or support a wide variety of special events and programs - all free to the public - that are designed to further the creation and enjoyment of art at the local level. In addition, through student scholarships and artist mentoring, we encourage the development of new and emerging artists throughout the community. Hours: Tue.-Fri., noon-6pm & Sat., 11am-4pm. Contact: 336/723-4444 or at (www.theafasgroup.com).

Reynolda House Museum of American Art, Reynolda Road, Winston-Salem. **Northwest Bedroom Gallery, Through Oct. 20** - "Good Impressions: Portraits Across Three Centuries from Reynolda and Wake Forest". Portraits are often taken at face value - as accurate representations of a person's appearance, sometimes removed by decades or centuries. But portraits are often the products of delicate negotiations between artist and subject. Sometimes they flatter, exaggerating the sitter's beauty or rich attire. Sometimes they capture the subject engaged in his or her occupation, whether pausing during study or painting in his or her studio. Sometimes they celebrate an auspicious occasion, such as a recent engagement or the imminent birth of a child. This exhibition features three centuries of portraits of men and women, Black and White, solitary and companionate, classic and modern. "Good Impressions" was mounted to mark the recent conservation treatment of John Singleton Copley's 1762 "Portrait of Mrs. Daniel Rogers" (Elizabeth Gorham Rogers) in the collection of Wake Forest University, and Reynolda House's recent acquisition of Kwame Brathwaite's 1973 photograph "Changing Times". **West Bedroom Gallery, Through Oct. 19** - "Leigh Ann Hallberg: Phenoms". In her "Phenoms series", artist Leigh Ann Hallberg creates large-scale abstract paintings inspired by her journey through local landscapes, including the Reynolda landscape. Hallberg, who has taught painting at Wake Forest University since 1999, chose a square format for the series, which she says leaves the viewer's understanding of the work open - the abstract painting is neither portrait nor landscape. Instead, it is a pretend space in which the viewer is able to reconsider and reimagine their experience of nature through the works. Hallberg employs a variety of color palettes and metal leaf. She uses the medium of watercolor in order to pull out its inherent qualities of flow, dripping, and puddling, which she considers nearly indexical with substances of the natural world: water, soil, and vegetation. In fact, most of the watercolor pigments are derived from materials found in the earth. The metal leaf invokes the idea of time and its passage, as the viewer's perception of the leaf (reflective, a void, a light) shifts over the course of the day, under various lighting conditions and viewing angles. The works in the "Phenoms series" represent Hallberg's felt resonance with and sense of wonder about the natural world.

East Bedroom Gallery, Through Dec. 31 - "Still I Rise: The Black Experience at Reynolda". "Into a daybreak that's wondrously clear / I rise." Maya Angelou's poem "Still I Rise," published in 1978, was an assertion of dignity and resilience in the face of oppression. In the 1980s, Angelou used Reynolda as her stage, sharing words of humanity, survival, and triumph. But before her, numerous Black lives impacted and intersected with the story of Reynolda. "Still I Rise: The Black Experience at Reynolda" examines the lives of the Black women and men who helped shape Reynolda as it evolved from a Jim Crow era working estate into a museum for American art. From 1912 through the 1950s, during one of the most repressive climates for Black people in North Carolina history, Black men and women navigated Reynolda's segregated spaces—farming the land, constructing buildings, and working

as domestic staff within Reynolda's walls. During this era, segregation, the exploitation of Black labor, and laws that regulated Black behavior affected the lives of all individuals in the Reynolda story, whether at Reynolda or at the R.J. Reynolds Tobacco Company. While the struggle for equality did not end with the Civil Rights Act of 1964, the story of Reynolda pivoted to one of a public cultural institution. When it opened its doors in 1967, Reynolda's intersection with Black lives shifted as the young, fledgling museum provided a venue for Black artists to celebrate their art. Artists such as Jacob Lawrence, Romare Bearden, and Maya Angelou transformed the historic setting into a stage for their art and teachings. Through art, letters, photographs, and audiovisual recordings, "Still I Rise: The Black Experience at Reynolda" examines Reynolda's complicated past in a space designed for reflection and healing. This exhibition has been made possible in part by the National Endowment for the Humanities. **East Bedroom Sleeping Porch, Ongoing** - Featuring a condensed version of the fall 2023 exhibition "Smith & Libby: Two Rings, Seven Months, One Bullet". This semi-permanent exhibition presents a fascinating look at an unsolved shooting that rocked the Reynolda estate and made national headlines in 1932. Like most family homes, Reynolda House witnessed its share of tragedies, none more shocking than the death by gunshot of Zachary Smith ("Smith") Reynolds, youngest child of R.J. and Katharine Smith Reynolds. Soon after midnight on July 6, 1932, Smith was shot on a sleeping porch at the family's country estate. Smith died later that morning. Smith's wife Libby Holman and Smith's childhood friend and secretary Albert "Ab" Walker were ultimately charged with first-degree murder. In a stunning reversal, the case was dropped before coming to trial. To this day, it is not known whether Smith Reynolds, 20-year-old heir and renowned aviator, died by suicide, accident or murder. **Ongoing** - Collection of 18th through 20th century art, sculpture, American art, and pottery. Admission: Yes. Hours: Tue.-Sat., 9:30am-4:30pm & Sun., 1:30-4:30pm. Contact: 336/725-5325 or at (https://reynolda.org/).



Work by Jessica Singerman

Sawtooth School For Visual Arts, Milton Rhodes Center For The Arts, 251 N. Spruce St., Winston-Salem. **Eleanor and Egbert Davis Gallery, Apr. 21 - July 12** - "Jessica Singerman: Cloud Girl Accidentally Eats Rainbow". A reception will be held on Apr. 17, from 6-8pm. Hours: Mon.-Fri., 10am-5pm & Sat., 10am-2pm. Contact: 336/723-7395 or e-mail at (www.sawtooth.org).

SEED Collective Gallery, 205 W. Sixth Street, entrance is on "Soho Alley", Winston-Salem. **Ongoing** - Featuring works by a cooperative group of artists in various mediums. Hours: Sat. from 11am-5pm & by appt. Contact: 336/722-2345.

Unleashed Arts Center, 630 North Liberty Street, Winston-Salem. **Ongoing** - The Center is a special initiative by The AFAS Group to foster an appreciation of art and to encourage the development of emerging artists. The center provides a venue for art shows, seminars, artist demonstrations and includes working artists studios. Hours: Tue.- Fri., noon-6pm and Sat., 11am-4pm. Contact: 336/413-6667 or at (www.theafasgroup.com).

Yadkinville

Yadkin Cultural Arts Center, 226 E. Main Street, Yadkinville. **Welborn Gallery, Through May 2** - "REBIRTH: Art by Survivors of Domestic Violence". "Rebirth" focuses on the courage, resilience, and strength of the survivor's journey. Bold, vibrant paint on canvas meets graceful sculptures to tell an inspirational story of hope and healing. According to the CDC, about 41% of women and 26% of men experience intimate partner violence in their lifetime, making this exhibition's message of healing and resilience particularly vital to our community. Hours: Mon.-Fri., 9:30am-4:30pm. Contact: 336/679-2941 or at (https://www.yadkinarts.org/).