

NC Commercial Galleries

continued from Page 65

Sat., 10am-5pm or by appt. Contact: 828/883-8300 or at (www.bernwellpottery.com).

Blue Moon Gallery, 24 E. Main Street, Brevard. **Ongoing** - Blue Moon Gallery specializes in photography and offers paintings and three-dimensional art and jewelry. Hours: Mon.-Sat., 10am-5pm; Sun., noon-4pm or by appt. Contact: 828/290-5492 or at (<https://www.bluemoongalleryandframe.com/>).

Brevard Clay, 84 E. Main Street, Brevard. **Ongoing** - Paint Your Own Pottery, Studio, Parties & Events, and Gallery, featuring works by WNC potters. Hours: daily 10am-6pm. Contact: 828/884-2529 or at brevardclay.com.

Hollingsworth Gallery, 147 E. Main Street, between Main Street Ltd. and Quotations Coffee Cafe, Brevard. **Ongoing** - Showcasing local and emerging artists. Hours: call for hours. Contact: 828/884-4974.

Local Color, 36 S. Broad Street, Brevard. **Ongoing** - Local Color in downtown Brevard takes its name seriously. In the colorful and diverse shop, visitors can find work from more than 120 artists, more than 100 of which come from within a 60-mile radius. Paul Hawkins has created a store with a strong sense of community. When looking for work to purchase, Paul looks for quality of workmanship, individuality, and a "funky" aesthetic. Visitors to Local Color will experience its offering before going through the door, as work flows out on the sidewalk. Offerings include pottery, fiber, woodwork, sculpture, painting, Lichtenburg, soaps, scents, metalwork, and much more. Hours: Mon.-Sat., 10am-6pm, and Sun., 11am-5pm. Contact: 828/384-0684.

Mountain Forest Pottery, 2395 Greenville Hwy., Brevard. **Ongoing** - Offering functional and whimsical pottery made on site by artist Mary Murray. "Handmade comes to life" in the homey gallery, offering the work of many regional artists - handmade teddy bears, jewelry, quilts, folk art, sculpture, drawings, and paintings. Recipes accompany many pottery pieces that are designed for baking apples, pies, and other dishes. Hours: Mon.-Sat., 10am-5pm & Sun., 1-5pm. Contact: 828/885-2149 or at (www.scenic276.com).

Mud Dabber's Pottery and Crafts, 3623 Greenville Hwy., Brevard. **Ongoing** - Featuring the work of six family members including: John O., Sybil, John E., Carol and Brandon (Brad), and Becky Dodson and friends Phillip Johnston, Carolyn Becker, Susan Peterson, and Matthew Nevenschwander, Elizabeth Galloway, Jonlyn Parker, Charlie Parker, Mary Ey, and Sue Jones. Hours: Mon.-Sat., 10am-5pm & Sun., noon-5pm. Contact: 828/884-5131 or at (www.muddabbers.com).

Newfound Artisan, 22 W. Jordan Street, Brevard. **Ongoing** - Newfound Artisan is a shop for people who love handcrafted goods. The things that you pick up and you know instantly. They feel better. They're made by a person who put their heart and soul into its creation. These are the things that make you want to know more about the process, how they're made, and who made them. That's why we're here. To help you connect with handcrafted goods made by real artisans. Hours: Wed.-Sat., 11am-6pm and Sun., noon-4pm. Contact: 828/384-3190 or at newfoundartisan.com.

Red Wolf Gallery, 8 E. Main St., Brevard. **Ongoing** - Featuring original works of art by over twenty regional artists in a historic downtown building. Hours: Mon.-Sat., 10am-5pm and Sun., 1-5pm and by appt. Contact: 828/862-8620.

The Color Wheel Gallery, 4 W. Main Street, Brevard. **Ongoing** - Featuring works by owner Erin Jones and other guest artists. Hours: Tue., 10am-7pm; Wed. & Thur., 10am-5pm; Fri., 10am-6pm; & Sat., 11am-5pm. Contact: 828/399-9504 or e-mail to (Studiosalon@gmail.com).

The Haen Gallery, 200 King Street, Brevard Lumberyard Arts District, Brevard. **Ongoing** - Committed to providing access to stunning and unique artwork for discerning collectors and our community in general. Our offerings will reflect the character and sensibilities of this wonderful region. Hours: Mon.-Fri., 10am-6pm; Sat., 11am-6pm; and Sun., noon-5pm. Contact: 828/883-3268 or at (www.haengallery.com).

The Lucy Clark Gallery & Studio, 51 West Main Street in downtown Brevard. **Ongoing** - An active working arts studio, featuring works by Lucy Clark, as well as talented artists from the local area as well as the Eastern Seaboard. We hope that while shopping online with us,

you will feel a pull toward the mountains of Western North Carolina and visit our sweet town and our lovely gallery to envelop all that the gallery has to offer. Hours: Tue.-Sat., 11am-5pm & Sun., noon-4pm or by chance. Contact: (<https://lucyclarkgallery.com/>).

Burnsville

The Design Gallery, 7 South Main St., Burnsville. **Ongoing** - Feature fine arts and crafts consisting of original paintings, etchings, prints, art glass, pottery, wood work, furniture, textiles, sculpture, metals, book art and jewelry. In addition we have furniture, lighting, home accents and gifts. Hours: Mon.-Sat., 10am-5pm. Contact: 828/678-9869.

Calabash - Ocean Isle Beach

Jewelry by Wendy-Beach House Fine Arts Gallery, 10152 Beach Drive, Unit 6, Calabash. **Ongoing** - Wendy specializes in unique designs of handcrafted jewelry of sterling silver, genuine beach glass and fine gems at affordable prices. Among forty five regional artists on display at the gallery are watercolorists Julia Frost of Jacksonville, NC, and Marilyn Pounds of Ocean Isle Beach, photographer Marko Angelo of Calabash, NC, and now introducing the pottery of Tristan Mardall, Carolina Shores, NC. Hours Tue.-Sat., 10am-4pm. Contact: 910/575-0024 or at (www.jewelrybyWendy.com).

Phthalo Blue Gallery, 7199 Beach Drive, Ocean Isle Beach. **Ongoing** - The gallery is an artist owned, art gallery featuring local and national artists. Hours: Tue.-Fri., 10am-4pm & Sat., 10am-2pm. Contact: 910/209-6025 or at (<http://www.phthaloibulegallery.com>).

Sea Gallery, 6885 Beach Dr., SW Route 199, Ocean Isle Beach. **Ongoing** - Featuring fine art by local, regional and nationally acclaimed artists. Tasteful and inviting original oils, Gicleés on canvas, watercolors, and charcoals are presented in our 7,000 square-foot gallery. Sculpture and pottery are also offered. Artists we exhibit are: Phyllis Arnold, Ken Buckner, Terry Buckner, Karen Edgar, Gary Halberstadt, V. Ryan Lauzon, Nancy Hughes Miller, Miller Pope, Tom Wooldridge, and Mary M. Wright. Hours: Mon.-Fri., 10am-5pm. Contact: 910/575-8222.



Work by Marilyn Kearney, Best in Show winner

Sunset River Gallery, 10283 Beach Drive SW, Calabash. **Through Apr. 19** - "FIRED: Artistry in Clay". **Ongoing** - Sunset River Gallery is a gallery where art lovers and investors at almost every level can find extraordinary art. The gallery serves the regional community in the Carolinas by representing exceptional local artists and also carries original work by internationally renowned artists. Its location in Calabash, North Carolina gives the gallery an advantage over many in major metropolitan areas. The large 10,000 square foot gallery offers the very low overhead of a gallery-owned facility in a cost-efficient location. Online reach has made this possible. It allows Sunset River to provide excellent works from the 20th Century Modern and Contemporary categories at better pricing than high-overhead galleries. New owner Larry Johnson from Bethesda, MD, has bought and sold art through major and middle-market auctions around the world for two

decades. He has been an amateur painter and sculptor for years, achieving a minor in fine art from Purdue University. The gallery has added a new 20th Century Art installation, featuring rare and valuable fine and modern art, primarily impressionist and abstract. FrameCenter hours are Wed. - Fri., noon-5pm and by appt. Call Lou Aliotta directly at 910/368-7351. Gallery Hours: Mon.-Sat., 11am-5pm. Contact: 910/575-5999 or at (sunsetrivergallery.com).

ALTERNATE ART SPACES - Ocean Isle Beach **Silver Coast Winery**, 6680 Barbeque Rd., Ocean Isle Beach. **Ongoing** - Art gallery featuring local artists, David McCune, Steven Schuman, and Suzanne C. Hunady, as well as daily tours, tastings and the art of wine making. Hours Mon.-Sat., 11-6pm & Sun. 12-5pm. Contact: 910/287-2800 or at (www.silvercoastwinery.com).

Cary

Stonehaven Jewelry Gallery, 101 Ledge Stone Way, Stonecreek Village Shopping Center, corner of Davis Drive and High House Rd., Cary. **Ongoing** - Featuring custom design, jewelry repair, original oil paintings, limited edition prints, and fine art glass. Hours: Mon.-Fri., 10am-6pm & Sat., 10am-5pm. Contact: 919/462-8888 or at (www.stonehavenjewelry.com).

The Nature of Art Gallery, 106-D Colonades Way, Waverly Place Shopping Center, Cary. **Ongoing** - Featuring whimsical and eclectic artworks for interiors and gardens with a native flair. Hours: Mon.-Sat., 10am-6pm, except Wed. till 9pm. Contact: 919/859-6004.

Village Art Circle Studio & Gallery, 200 South Academy Street, Cary. **Ongoing** - Our gallery is located in Ashworth Village in historic downtown Cary, behind Ashworth Drug in the plaza, corner of Academy and Chatham Streets. We feature a wide variety of oil, watercolor and acrylic paintings by our award-winning studio artists as well as jewelry, glass and pottery. Studio artists are often working on current art projects during gallery hours. Come by and talk with the artists! Classes and workshops by gallery director, JJ Jlang, are frequently offered as well. Parking is available in the plaza in front of the gallery as well as on Chatham and Academy Streets. Hours: Wed.-Sat., 10am-4pm. Contact: e-mail to (villageartcircle@gmail.com) or at (www.villageartcircle.com).

Chapel Hill - Carrboro

Animation and Fine Art Galleries, University Mall, 201 S Estes Dr., Chapel Hill. **Ongoing** - Featuring contemporary works of art and animation art. Hours: Mon.-Sat., 10am-6pm. Contact: 919/968-8008 or at (www.animationandfineart.com).

Black Mountain Gallery, 1800 #9 E. Franklin Street, Eastgate Shopping Center, Chapel Hill. **Ongoing** - Featuring handwrought designer jewelry by artisans from throughout the United States. Hours: Mon.-Sat., 10am-6pm. Contact: 919/967-8101.

Blackwood Station Gallery, 6113 Hwy. 86N., Chapel Hill. **Ongoing** - Featuring functional & fine art, sculpture and fine art prints. Hours: Tue.-Fri., 11am-7pm; Sat., 10am-6pm, & Sun., noon-6pm. Contact: 919/968-1360.

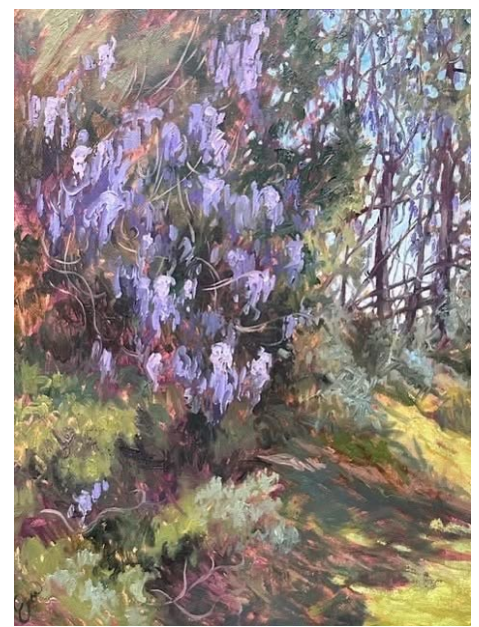
Cameron's, University Mall, Chapel Hill. **Ongoing** - Featuring contemporary American crafts and pottery, folk art and functional art objects. Hours: Mon.-Sat., 10am-9pm & Sun., 1-6pm. Contact: 919/942-5554.

Chapellier Fine Art, 105 Arlen Park Drive, Chapel Hill. **Ongoing** - Fine, investment quality 19th & 20th century American art. Hours: Mon. - Fri. by appointment. Contact: 919/967-9960 or at (www.citysearch.com/rdu/chapellier/).

Dirt Road Gallery, 8218 Bright's Way, Chapel Hill. **Ongoing** - Featuring handcrafted items - including paintings, carvings, molas, textiles & fabrics, ceramics, beads and jewelry from West Africa, the Middle East, Central America, and the US collected over years of traveling. Hours: Sat. & Sun., 11am-6pm & by appt. Contact: 919/933-6999 or at (www.dirtroadgallery.net).

Ferns and Fancy Gallery, Fine Arts and Crafts, 15 Woodside Trail, Chapel Hill. **Ongoing** - Featuring tapestry, marbled panels, woven wearables, and marbled scarves by Trudy Thomson. Hours: by appt. Contact: 919/923-5022 or at (www.fernsandfancy.com).

N.C. Crafts Gallery, 212 W. Main St., corner of Weaver and West Main Sts., Carrboro. **Ongoing** - Offering a wide assortment of items handcrafted by North Carolina artisans. You'll find contemporary and traditional pottery, blown glass, wood, jewelry, metalwork, toys, folk art, garden sculpture, kaleidoscopes, baskets, fiber art and more. The Gallery currently carries the work of more



Work by Emily Eve Weinstein - NC Crafts Gallery

than 500 North Carolinians, from the mountains to the shore. The gallery also hosts two shows a month. Shows begin the first of each month and give the featured artist the opportunity to showcase an entire body of work. Hours: Mon.-Sat., 10am-6pm & Sun., 1-4pm. Contact: 919/942-4048 or at (<http://nccraftsgallery.com/>).

Studio 91 Fine Art Gallery, Meadowmont Village, Chapel Hill. **Ongoing** - Featuring works by Jean Abadie, Thomas Arvid, Dimitri Danish, Michael Flohr, Edward Lewis, and Fabian Perez. Hours: Mon.-Thur., 10am-6pm; Fri., 10am-8pm & Sat., 10am-5pm. Contact: 919/933-3700.

Charlotte Area

SouthEnd Gallery Crawl - From 5-8pm on the 1st Friday of each month.

Allison Sprock Fine Art, 600 Queens Rd., the gallery shares space with The Nichols Company in one of Myers Park's oldest houses, Charlotte. **Ongoing** - The gallery represents many well-known artists from all over the world. Some of the featured artists are very famous; others are emerging including: Andre Bludov, Constantin Chatov, Marc Chatov, Roman Chatov, Gee Gee Collins, Larry Davis, Noah Desmond, Margaret Dyer, Sabre Esler, Stephen Fry, Benjamin Hollingsworth, Linda James, Dimitri Kourouniotis, Stan Mullins, Anne Neilson, Becky Ollinger, Spencer Reid, Felice Sharp, Tracy Sharp, Louis St. Lewis, Elizabeth Stehling, Harry Stewart, Cate Waggoner, Karen Weihs, Alice Williams, Sean Williams, and Kathy Wochele. Hours: Mon.-Sat., 10am-6pm. Contact: 404/274-5829 or visit (www.allison-sprockfineart.com).

Anne Neilson Fine Art, 721 Governor Morrison Street, Suite 180, Charlotte. **Ongoing** - The gallery represents over 30 esteemed national and international artists, as well as works by noted painter and author Anne H. Neilson. The gallery is an outgrowth of Neilson's ever-growing popularity sparked by her Angels Series paintings and book. Hours: Mon.-Fri., 10am-5pm; Sat., 11am-3pm & by appt. Contact: 704/496-9181 or at (anneneilsonfineart.com).

Art House Studios, 3103 Cullman Ave., off 36th Street in the NoDa District, Charlotte. **Ongoing** - Featuring a complex of working studios by area artists. Hours: during Gallery Crawls and by appt. Contact: 704/577-4587 or e-mail at (arthouse_noda@earthlink.net).

Artists' Atelier Carolina, located in the Pentes Artworks Gallery & Studios bldg., 1346 Hill Rd., Charlotte. **Ongoing** - Featuring works by Jim Fales, Fay M. Miller, Jack Pentes, Betty G. Robinson, Gregory Weston, and Peggy Hutson Weston. Hours: by appt. Contact: 704/552-6200.

Awaken Gallery, 107 W Central Ave., Mount Holly. **Ongoing** - Our mission is to be there; to use these talents for the greater good. To show that we have been going in a circular pattern throughout history. It's time to learn from the past to create a better future. We need to get off that wheel we are running on in order to move forward. You don't need to speak a certain language or come from a particular place. This work speaks to all. Hours: Tue.-Sat., 11am-4pm. Contact: 980/277-8527 or at (www.awakengallery.com).

Carolina Fine Art, 300 S. Sharon Amity Road, Cotswold Village, Charlotte. **Ongoing** - Featuring a local artist-operated gallery selling original paintings, pottery and more. Hours: Tue.-Sat., 10am-5pm. Contact: 704/635-0226 or at (carolinafineart.com).

continued on Page 67