

Lark & Key Gallery and Boutique

continued from Page 30 / [back to Page 30](#)

paintings. Encaustic is her passion. The medium, a mixture of beeswax, resin and oil paint, allows for a multi-dimensional, heavily textured surface. Klich's process combines painting, drawing, collage and photo transfers creating an unexpected spontaneous flow of energy and endless possibilities.

Lark & Key is celebrated for its diverse selection of paintings and functional art from local, regional and national artists. The gallery interweaves a calming and rustic sensibility with the contemporary artwork it showcases. With an eye towards the slightly whimsical, the subtly surreal and quiet nature; the gallery walls are filled with stories to ponder and dreamscapes to get lost in. Pottery and jewelry round out the selection. There is something for everyone - whether first time buyer, long-term collector, gift seeker or fine craft scavenger.



Works by Judy Klich

For further information check our NC Commercial Gallery listings, call the gallery at 704/334-4616 or visit (www.larkandkey.com).

Jerald Melberg Gallery in Charlotte, NC, Offers Works by Ida Kohlmeier

Jerald Melberg Gallery in Charlotte, NC, is presenting *Ida Kohlmeier*, a solo exhibition of paintings, editioned prints and small sculpture by New Orleans native Ida Rittenberg Kohlmeier (1912-1997), on view through July 27, 2013.

Kohlmeier became one of the most prominent abstract artists in the South. Influenced by Hans Hofmann and fellow abstractionist Mark Rothko, she changed her style from representation to abstraction including the blurring of bands of color into large geometric shapes. In the 1970s she developed a distinctive style using personalized symbols or hieroglyphs. Her work includes paintings utilizing grids and abstract sculpture constructed of materials from Styrofoam to steel.

Kohlmeier exhibited extensively during her lifetime, including a major retrospective exhibition organized by the Mint Museum of Art that traveled to seven venues over two years. Her work can be found in the permanent collections of the Metropolitan Museum of Art, the Smithsonian Institution, the High Museum of Art, the Houston Museum of Fine Arts and the San Francisco Museum of Modern Art, among many others.

In honor of the dedication of Charlotte's new Romare Bearden Park, an exhibition of small St. Maarten watercolors by Romare



Works by Ida Kohlmeier

Bearden will also be on view.

For further information check our NC Commercial Gallery listings, call the gallery at 704/365-3000 or visit (www.jeraldmelberg.com).

Elder Gallery in Charlotte, NC, Offers Spin-Off Exhibit from *Carolina's Got Art!*

For a third year Elder Gallery in Charlotte, NC, is hosting one of the region's largest juried art competitions for artists living and working in North and South Carolina. This year's competition received 2,800 entries which were viewed by *Bloomberg News* art critic, Lance Esplund who chose 130 pieces for the exciting exhibition. From June 7 - 29, 2013, Elder Gallery will present *June Salon*, featuring a variety of art created by 70 artists, which was not selected for the *Carolina's Got Art!* exhibition and competition.

A total of \$15,000 in cash and prizes were awarded to artists that Esplund considers "best in class" of the entries he chose. Glass sculptor Jean Cheely of Raleigh was awarded the \$5,000 Best in Show award.

As in previous years gallery owner, Larry Elder continued the tradition of selecting entries to comprise a second exhibition titled *June Salon*. Due to the large number of entries Elder decided to add a third exhibition for the month of July. In all, a total of 275 works of art were selected for the 2013 edition of *Carolina's Got Art!*

Participating artists in *June Salon* include: Sandra Anderson, Lucy Bailey, Page 32 - Carolina Arts, June 2013

Vickie Bailey Ebbers, Tamie Beldue, Burritt Benson, Chad Beroth, Lynette Bettini, Anne Bevan, Denee' Black, Barbara Blaisdell, Allison Anne Brown, Raymond Byram, Carmen Cacalano, Matthew Campbell, Cynthia Cole, David Datwyler, Frankie Denton, David Detrich, Claire Farrell Heels Over Head, Trey Finney, Kristan Five, Patz Fowle, Annette Giaco, Aaron Gibbons, Kristin Gibson, Bob Graham, Anne Gregory, Henry Gung, Johnson Hagood, Edith Hamblin, Joyce Harkins, Ann Harwell, Anita Hepburn, Jillian Herrmann, Warren Hicks, Brucie Holler, Carol Beth Icard, Jeffrey Jakub, Stephen Janton, Susan Johann, Alicia Kelemen, Elizabeth Keller, Carol Kroll, Jason Lancaster, Anne Lane, Alexis Lavine, Gabriel Lovejoy, Brenda Lyday, Janice MacDonald, Cat Manolis, Cecile L.K. Martin, Trena McNabb, Stephen Mould, Frank Myers, Stephanie Neely, Virginia Pendergrass, Edna Perkinson, Gary Pohl, Tom Potocki, Gracie Ramirez, Betty Recoulley, Elizabeth Rundorff Smith, Kristi Ryba, Liisa Salosaari Jasinski, Bill Sander, Helen Seebold, Edward Shmunes, Gregory Siler, Amelia Rose Smith, Kate Speranza, Bob Sumners, Jan Swanson

continued above on next column to the right

[Table of Contents](#)

Carol Bodiford & Connie Winters New Works

at Shain

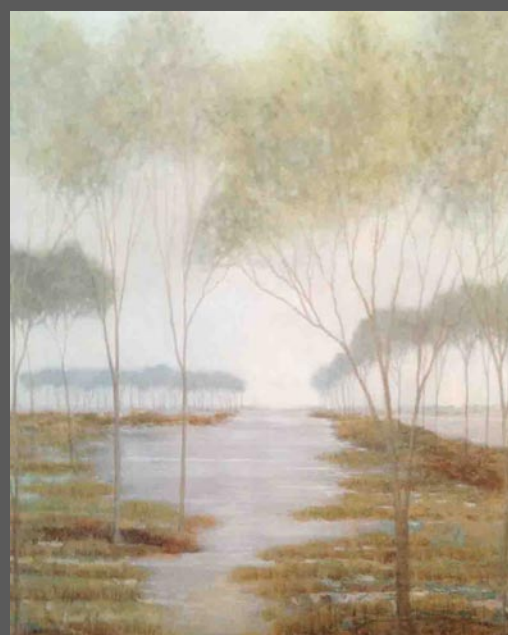
Through June 29, 2013

SHAIN
GALLERY



Summer Haze by Connie Winters

24 x 36 inches



No. 815 by Carol Bodiford

52 x 44 inches

Opening Reception
Friday, June 7, 2013
6 - 8:30pm

Shain Gallery presents a two-person show featuring new work by Charlotte artists Carol Bodiford & Connie Winters.

SHAINGALLERY.COM

2823 Selwyn Avenue
Charlotte, NC 28209
704.334.7744

Barney, Cindy Taplin, Lorraine Turi, Valerie Schnauer, David Wasserboehr, Jim Weitzel, Wendy Wells, James Wine, Pamela Winkler, and Evelyn Wong.

On Saturday following the opening of *Carolina's Got Art!* Esplund participated in a discussion on the process he used to select the show as well as his thoughts on the contemporary art scene in America.

Portions of the discussion were captured on video and can be seen at (www.CarolinasGotArt.com) as well as images of the winning entries.

For further information check our NC Commercial Gallery listings, call the gallery at 704/370-6337 or visit (www.elderart.com).

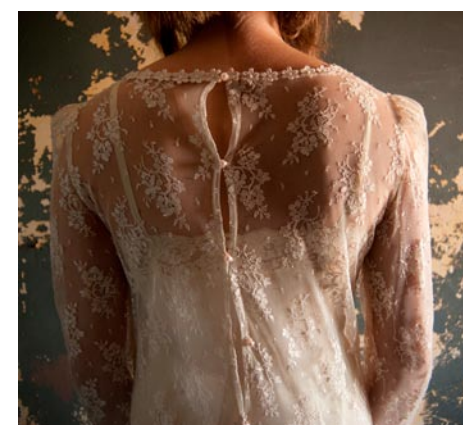
Waterworks Visual Arts Center in Salisbury, NC, Offers New Exhibits

The summer exhibition at Waterworks Visual Arts Center in Salisbury, NC, is *Memory - Nature and Nurture*, which brings together four female artists who examine the function and meaning of memory and its role in nature and nurture in shaping cultural norms for women. Through vastly different life experiences, creative process and inspiration are highlighted in a woman's life through visual representation in various mediums. The exhibition is a feminine and delicate blend of memory and imagination. The exhibition will continue through Sept. 7, 2013.

Diana Greene (Winston-Salem, NC) is a multimedia artist who explores identity and story with a vivid eye, a curious mind, and an open heart. Her series begins with a question that opens the door to investigation. The answers arrive in many forms that blend together what's written, recorded, captured, constructed, and found.

This exhibit was first envisioned when Greene discovered over a year ago that she unintentionally collects dresses. She asked herself why she kept the variety of dresses, and the exhibit seeks to answer that question. Dresses can be a touchstone or even a talisman for memory which inspired her to create her series and performance piece. It is part creative memoir, part dreamscape.

A Dozen Dresses: The ReCollection is a beautiful photographic narrative featuring photographs of different dresses from various stages of Greene's life that she kept stored in an attic. "This series is



Work by Diana Greene

unsentimental. *A Dozen Dresses* explores the theme of fashion as personality, clothes as symbols, dresses as conduits for dreams and mistakes, identity and loss. Clothes change you, please you, pull you down, sex you up or hide you. They are a force. This is my belief anyway, and surely a big reason I've kept more than a dozen dresses safely stored away all these years."

Greene's special performance piece, based on the photographs, will be shown in the Norvell Theatre on Thursday, Aug. 15, 2013 (time to be determined). The show is moving, funny, and visually rich with images, video, and music.

Greene's photographs have been exhibited at the Southeastern Center for Contemporary Art (Winston-Salem), The Light Factory (Charlotte, NC),

continued on Page 33