

# SC Institutional Galleries

continued from Page 39

Chapin Art Museum strives to be one of the finest visual arts museums in the Carolinas. With 11 galleries that change throughout the year, Myrtle Beach's only art museum offers exhibitions featuring paintings, textiles, sculpture, photography, video, ceramics, assemblage, collage and more. A visit to the Art Museum's exhibitions can be enhanced by its lively programming, including artist receptions, tours, lectures, workshops and classes for both adults and children. Hours: Tue.-Sat., 10am-4pm & Sun., 1-4pm. Contact: 843/238-2510 or at ([www.myrtlebeachartmuseum.org](http://www.myrtlebeachartmuseum.org)).

**Seacoast Artists Gallery**, located at The Market Common, 3032 Nevers Street, Myrtle Beach. **Ongoing** - features the works of over 70 local artists of the Seacoast Artists Guild of South Carolina, a nonprofit visual arts organization dedicated to advancing excellence in the visual arts through teaching, exhibits, workshops and special events. Guild membership benefits include monthly meetings, programs & presentations; and opportunities to participate in Spring & Fall Art Shows and Web Gallery. Artwork includes oil, acrylic, watercolor, fiber art, mixed media, clay, metal engraved jewelry, sculpture, assemblage, and fine art photography. Art classes and workshops offered. Hours: Mon.-Sat., 10am-6pm and Sun., noon-6pm. Contact: 843.232.7009, e-mail at ([seacoastartistsgallery@gmail.com](mailto:seacoastartistsgallery@gmail.com)) or at ([seacoastartistsguild.com](http://seacoastartistsguild.com)).

## Newberry

**Newberry Arts Center**, 1200 Main Street location, Newberry. **Ongoing** - The Newberry Arts Center was established in 2014 and is operated by the City's Parks, Recreation and Tourism Department. In less than a year a solid arts program was established that includes programs for all ages. The mission of the Newberry Arts Center (NAC) and Newberry Arts Program is to provide quality arts experiences to all interested citizens and increase support for working artists while creating appreciative current and future art patrons by involving the diverse population and fostering local economic growth while enhancing the quality of life for all residents. The NAC also established and hosted the first ever South Carolina Clay Conference, an annual conference for clay enthusiasts held in Newberry each year. Hours: Call for hours. Contact: 803/597-1125 or at ([www.NewberryArtsCenter.com](http://www.NewberryArtsCenter.com)).

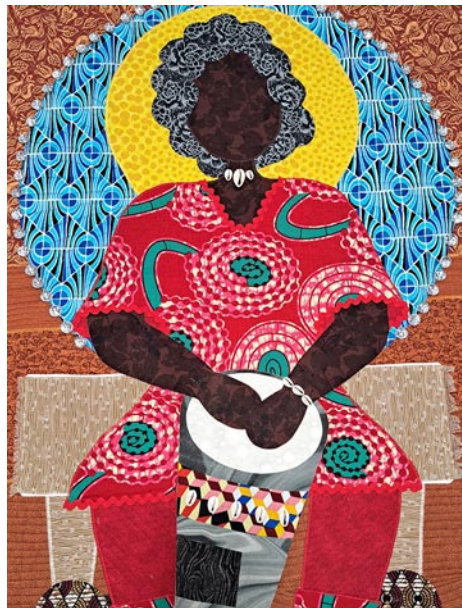
## North Charleston



Work by Doug McAbee

**Park Circle Gallery**, formerly the Olde Village Community Building, 4820 Jenkins Avenue, in the bustling Park Circle neighborhood of North Charleston. **June 5 - 29** - "Plastic Beach," featuring mixed-media assemblages by Charleston-based K. Kim Thomas, who creates works that are a visual discussion around climate change, nature, and our insatiable consumer culture. In manipulating debris through a variety of media - primarily sculpture, installation, and printmaking - she presents the viewer with an everyday object in an unexpected, new form. In her exhibit, "Plastic Beach", Thomas presents imagined future relics pieced together from the debris of both the natural environment and our plastic single-use culture. Thomas will offer a guided tour on June 8, from 1-2pm. A reception will be held on June 28, from 5-7pm. **June 5 - 29** - "It Don't Cost Nothin' To Be Nice," features works by Laurens, SC, based artist Doug McAbee. He presents a collection of colorful drawings on uniquely shaped wood panels, vibrant hollow-form steel sculptures, and site specific drawings with acrylic paint marker. The result is an immersive opportunity for the viewer to walk through the interior of McAbee's mind. Characters from McAbee's imagination create narratives about interpersonal relationships in his ink drawings and steel sculptures. Even his most abstracted imagery is derived from organic forms with recognizable heads, eyes, and feet. A reception will be held on June 28, from 5-7pm. **Ongoing** - In addition to the monthly exhibitions, the "gift shop" at the North Charleston City Gallery, which features a variety of items by local artists, will also be moved to PCG. Cultural Arts will also continue to host art workshops and recurring meetings for art groups and guilds in the space once gatherings are safe to resume. Admission: Free.

Hours: Wed.-Fri., 11am-6pm & Sat., noon-4pm. Contact: 843/740-5854, or at (<https://www.northcharleston.org/residents/arts-and-culture/>).



Work by Stefanie Rivers, part of the "African-American Fiber Art Exhibition".

**ALTERNATE ART SPACES - North Charleston North Charleston City Hall**, 2500 City Hall Lane, North Charleston. **1st & 2nd floors, Through June 16** - "17th Annual African American Fiber Art Exhibition, Celebrating Black Music," curated by award-winning master art quilter and curator Torrea "Cookie" Washington. African American fiber artists from across the nation were invited to participate. The exhibition is a component of the 2024 North Charleston Arts Fest. African Americans have a rich, deep, vibrant musical culture. Black musicians, singers, and songwriters are the undoubted pioneers of American music, laying the foundation for genres such as hip-hop, R&B, jazz, blues, country, rock 'n roll, and more. Black Music is the soundtrack of our lives, offering one of the most inescapable examples of the importance of the African American experience to the cultural heritage of all Americans, regardless of race or origin. This year's theme pays homage to legends of Black American music, challenging artists to create a fiber art piece that honors and uplifts Black music and musicians. Hours: 8am-7pm daily. Contact: 843/740-5854, at (<https://www.northcharleston.org/residents/arts-and-culture/>) or ([NorthCharlestonArtsFest.com](http://NorthCharlestonArtsFest.com)).

**North Charleston Riverfront Park**, 1001 Everglades Dr., The Navy Yard at Noisette (former Charleston Naval Base), North Charleston.

**Through Mar. 16, 2025** - "18th Annual National Outdoor Sculpture 2024/2025 Exhibition, juried by Lauren Nye, Associate Curator at the Hunter Museum of American Art in Chattanooga, TN. Sculpture artists from across the nation were invited to enter their work. Twelve sculptures by artists from 5 different states were juried into the 2024/25 exhibit. Once installed, awards for Best in Show, Outstanding Merit, and Honorable Mentions will be selected by the juror, Lauren Nye. Participating sculptors include: Ann Melanie of Anderson, SC (HONORABLE MENTION); Adam Walls of Hope Mills, NC; Bob Doster of Lancaster, SC; Beau Lyday of Valdese, NC; Carl Billingsley of Ayden, NC; Corrina Sephora of Atlanta, GA; Doug McAbee of Laurens, SC (HONORABLE MENTION); Hanna Jubran of Grimesland, NC (BEST IN SHOW); Joni Younkings-Herzog of Athens, GA (HONORABLE MENTION); Mark Chatterley of Williamston, MI (OUTSTANDING MERIT); and Matthew Newman of Damascus, VA. Organized by the City of North Charleston Cultural Arts Department and presented as a component of the annual North Charleston Arts Fest, this unique exhibition offers established and emerging artists the opportunity to display their inspiring and extraordinary sculptures throughout the picturesque North Charleston Riverfront Park, set along the banks of the Cooper River. An estimated 50,000 people visit this public park annually to enjoy the amenities located in the heart of the city's arts community. Hours: daylight hours. Contact: call 843/740-5854, visit ([NorthCharlestonArtsFest.com](http://www.northcharleston.org/residents/arts-and-culture/)) or at (<https://www.northcharleston.org/residents/arts-and-culture/>).

## Orangeburg

**Cecil Williams Civil Rights Museum**, 1865 Lake Drive, Orangeburg. **Ongoing** - Established in 2019, the exquisite ultra-modern facility displays 1000 images of the Civil Rights Movement, but from the perspective of The Epochal South Carolina Events That Changed America. The massive archives comprise the largest collection of images of this type among all museums in the United States; including the Atlanta based High Museum which archives 300 images. The images were created by the founder, Cecil Williams, who began photography at age 9 and covered almost all histori-

cally significant events in South Carolina; from 1950 Briggs v. Elliot in Summerton, thru the 1969 Charleston Hospital Workers' Strike...and Beyond. From 1955 through 1969, Williams was a freelance journalist for "JET" magazine. His images have appeared in thousands of magazines, newspapers, historical publications, and motion picture productions. The museum design itself is part of the founders' DNA because; upon graduating from high school, Williams wanted to attend Clemson University to study architecture but denied because of his race. He then purchased a drafting board and through the years, designed three residences; including one featured in "EBONY", and the museum's design which has evolved into a living history facility. Hours: call ahead for hours. Contact: call 803-531-1662 or at ([www.cecilwilliams.com](http://www.cecilwilliams.com)).

**Lusty Gallery**, Orangeburg County Fine Arts Center, Edisto Memorial Gardens, 649 Riverside Drive, Orangeburg. **Ongoing** - Featuring works by local artists. Hours: Mon.-Thur., 8:30am-4:30pm & Fri., 8:30am-noon. Contact: Vivian Glover at 803-606-7770 or at (<https://orangeburgarts.org/>).

## Pawleys Island, Litchfield & Murrells Inlet

**Brookgreen Gardens**, 1931 Brookgreen Garden Drive, US 17, south of Murrells Inlet. **The Stanley and Naomi Bleifeld Gallery, Ongoing** - All the works on view in the Bleifeld Gallery are from the collection of Brookgreen Gardens. The gallery showcases the work of historic and contemporary sculptures whose subjects are taken from the natural world. It includes work by Anna Hyatt Huntington, Gertrude Lathrop, Stanley Bleifeld, Grainger McKoy, Sandy Scott, Kent Ullberg, and numerous other prominent sculptors, past and present. The gallery officially opened in Feb. 2017. **Ongoing** - "Lowcountry: Change and Continuity," a major new exhibit, tells the story of human interaction with this land over the centuries. It features wall size photomurals by SC naturalist photographer Tom Blagden, along with a range of artifacts tracing the history of man's occupation of this extraordinary landscape. **General Gardens, Ongoing** - One of the largest collections of outdoor sculpture in America. This preeminent collection of American representational sculpture includes - 560 works by 240 artists - representing such well-known artists as Charles Parks, Daniel Chester French, Carl Milles, August Saint-Gaudens and Anna Hyatt Huntington. Hours: daily, 9:30am-5pm. Admission: Yes. Admission to Brookgreen is good for seven days. Contact: 843/235-6000, 800-849-1931, or at ([www.brookgreen.org](http://www.brookgreen.org)).

**ALTERNATE ART SPACES - Pawleys & Litchfield Gallery at Applewood House of Pancakes**, 14361 Ocean Highway, Litchfield Beach. **Ongoing** - features works of accomplished local artists and photographers who are members of the Seacoast Artists Guild of South Carolina dedicated to advancing excellence in the visual arts through teaching, exhibits, workshops, art shows & sales. Hours: daily 6am - 2pm. Contact: at ([www.seacoastartistsguild.com](http://www.seacoastartistsguild.com)).

## Richburg

**Olde English District Visitors Center & Market**, 3200 Commerce Drive, Suite A, Richburg. **Ongoing** - This is your one stop shop for finding specialty food products, art (pottery, jewelry, etc.) and many other local, unique items from our region. We also carry a variety of South Carolina souvenirs. Hours: daily, 9am-5pm. Contact: 803/385-6800 or at ([www.oldeenglishmarket.com](http://www.oldeenglishmarket.com)).

## Ridgeland

**Morris Center for Lowcountry Heritage**, 10782 Jacob Smart Blvd. S., on US 17, in a 1937 historic Sinclair Service Station, Ridgeland. **Through Feb. 22, 2025** - "Language of Clay: Catawba Indian Pottery and Oral Tradition". This immersive exploration of Catawba pottery, curated by the University of South Carolina Lancaster's Native American Studies Center, promises to captivate audiences with its profound connection to oral traditions. Pottery making is the single most unbroken material tradition of the Catawba Nation's long history and is still done with methods handed down through generations. The "Language of Clay" features dozens of clay pottery pieces created by Catawba artisans from the 19th century to the present that represent various Catawba traditions and legends. **Ongoing** - Morris Center for Lowcountry Heritage hosts exhibitions on local history, art, and culture. We also provide hands-on art workshops throughout the year. Admission: FREE. Hours: Tue.-Sat., from 10am-5pm. Contact: 843/284-9227 or at ([www.MorrisHeritageCenter.org](http://www.MorrisHeritageCenter.org)).

## Ridge Spring

**Art Association of Ridge Spring Gallery**, Art Center in Ridge Spring, located behind the

Ridge Spring Civic Center, 108 Maintenance Shop Circle, Ridge Spring. **Ongoing** - The Center contains works in a variety of media by: Ron Buttler, D.S. Owens, Carolyn Boatwright, Betsy Connelly, Kedryn Evans, Jessica Goodman, Melanie Knight, John Zurl, Donna Minor, Joanne Crouch, Gloria Grizzle, Linda Lake, Gwen Power, Deborah Reeves, Marion Webb, and Barbara Yon. It is also home of the Ridge Quilt Trail. Hours: Fri. & Sat., 10am-2pm or by appt. Contact: 803/685-5577 or e-mail to ([artass-nridgespring@gmail.com](mailto:artass-nridgespring@gmail.com)).

## Rock Hill



Work by Doug McAbee

**Center for the Arts**, 121 East Main St., Rock Hill. **Dalton Gallery, Through June 7** - "Chain Reactions of Light," featuring works by Doug McAbee. Using playful creatures as symbols for human challenges, McAbee's pieces carry a hopeful undertone, inviting viewers of all ages to engage with their whimsy. The imaginative creatures are used as stand-ins for the characters in McAbee's narratives, and his work focuses on the challenges that face all humans regardless of race, gender, or class. These issues are communicated through narratives and while the problems and dualities are acknowledged, there is always a sense of hope that we will overcome these challenges with kindness and community. **June 14 - Aug. 24** - "35th Annual Juried Competition. **Perimeter Gallery, Through June 7** - "BMX Invitational Art Exhibition". Experience the exhilaration of the cycling scene through artists' eyes. The exhibition captures the thrilling spirit of BMX as cyclists round the corners, race the straights, and jump the gaps. Participating artists include: Mary Brown, Constance Buchanan, M.C. Churchill-Nash, Barbara Curry, Sarah Kennedy Irwin, Gerry King, Dr. Bradley Sabelli, and Deena Shuffler **June 14 - Aug. 24** - "Mugshot". **Edmund D. Lewandowski Classroom Gallery, Through July 6** - "St. John's United Methodist Church After School Care 2D and 3D Works". **June 14 - Aug. 24** - "Compass Prep Homeschool Art Show". Hours: Mon.-Thur., 9am-6pm; Fri., 9am-5pm; and on 2nd and 4th weekends, Sat., 10am-2pm; & Sun., 2-4pm. Contact: 803/328-2787 or at (<http://www.yorkcountyarts.org/>).

**Museum of York County**, 4621 Mt. Gallant Road, Rock Hill. **Through Nov. 10** - "Decomposers Glow," an awe-inspiring larger-than-life landscape of illuminated snails and mushrooms. Created by Meredith Connelly, a Charlotte, NC, based and award-winning multidisciplinary artist, the site-specific installation portrays the agents of decomposition through an interplay of light and technology. A curving path leads visitors through a soft glowing, otherworldly environment to observe over one hundred hand-constructed and 3D printed sculptures. **Through Dec. 15** - "Return to Earth," features photographs of actual fungi by Mike Hammer. Hours: Tue.-Sat., 10am-4pm & Sun. 1-5pm. Contact: 803/329-2121 or at (<http://chmuseums.org/>).

**The Rock Hill Pottery Center**, Getty's Art Center, 201 East Main Street, in Old Town Rock Hill. **Ongoing** - Featuring works by Bob Hasselle, Christine White, Katherine Petke, Hope Fregerio, and Brian Schauer. Hours: Mon.-Fri., 10am-4pm and Sat., 10am-2pm. Contact: call 803/370-8109 or find them on Facebook.

## Seneca Area

**Blue Ridge Arts Council Gallery**, 111 E. South 2nd & Townville Streets, Seneca. **Main Gallery, Through June 21** - "Annual Juried Show". **Members Gallery, Through June 21** - "Sleeping in the Forest," featuring works by Susan Stamey. **Classroom Gallery, Through June 21** - "Tri-County Plein Air Painters". Hours: Wed.-Fri., 1-4pm and Sat., 10am-1pm. Contact: 864/290-4476 during gallery hours, 727/457-5274 until 6pm or ([www.blueridgeartscenter.com](http://www.blueridgeartscenter.com)).

continued on Page 41