

Magnolia Plantation & Gardens

continued from Page 4 / [back to Page 4](#)

Charleston. Don't miss out on this unique opportunity to see nature in a whole new light!

Magnolia Plantation and Gardens is located at 3550 Ashley River Road (On Route 61) in Charleston, SC. It is open

daily from 9am - 5pm, but closed Thanksgiving, Christmas, and New Year's Days.

For further information check our SC Institutional Gallery listings, call 843/571-1266 or e-mail to (info@magnoliaplantation.com).

Lowcountry Artist Gallery in Charleston, SC, Features Works by Helli Luck

Lowcountry Artist Gallery in Charleston, SC, will present *Into the Light*, featuring works by Helli Luck, on view from June 1 - 30, 2025. A reception will be held on June 6, from 5-8pm, part of the Charleston Gallery Association's ArtWalk.

Step into *Into the Light* and experience the emotional resonance of Helli Luck's featured paintings - a work that quietly captures the soul. With an extraordinary sensitivity to light and shadow, Helli freezes a fleeting moment that feels both intimate and universal. It's in that delicate intersection - the golden edge of sunlight, the hush of a falling shadow - that something stirs within the viewer.

Luck is a London-born impressionist painter known for her expressive oil paintings that capture light and emotion in coastal and natural scenes. Trained at Central Saint Martins, she worked in advertising before focusing on fine art. Now based in Pawleys Island, SC, her work is featured in galleries across the Southeast, including Charleston's Lowcountry Artists Gallery.



Work by Helli Luck

The Lowcountry Artists Gallery is the oldest artist-owned fine art gallery in Charleston celebrating 33 Years with 33 artists. Above all, we wish to inspire and



Work by Helli Luck

engage art enthusiasts and collectors with traditional and contemporary fine art produced by our nationally and internationally recognized, award-winning local artists. We also aim to enhance our community's cultural arts as well as educate the public by promoting a variety of styles, mediums and methods of artistic expression.

Furthermore, by offering diverse exhibitions and promoting community outreach programs, we will build a bridge between the community and our gallery. Engaging the public with hospitality, respect & beautiful art will further that goal.

For further information check our SC Commercial Gallery listings, call the gallery at 843/577-9295 or visit (www.lowcountryartistsgallery.com).

Robert Lange Studios in Charleston, SC, Features Works by Michelle Jader

Robert Lange Studios in Charleston, SC, will present *Untethered*, an evocative exploration of displacement, discovery, and the art of letting go, featuring works by Michelle Jader, on view from June 6 - 27, 2025. A reception will be held on June 6, from 5-8, during the Charleston Gallery Association's ArtWalk.

The show marks a bold and personal evolution in Jader's work, reflecting on themes of upheaval, freedom, and finding home in the midst of transformation.

Created during a two-year journey across 33 states at the height of the pandemic, *Untethered* is rooted in Jader's experience of displacement and rediscovery. Best known for her layered, motion-filled paintings that blend vulnerability and strength, Jader uses this new series to explore the emotional landscape of change - from the wildfires that turned San Francisco's skies orange to the dream-like moments of self-liberation on the open road.



Work by Michelle Jader

"This show is about more than movement - it's about surrender and resilience," says Jader. "*Untethered* is a visual diary of choosing to leave everything familiar behind in search of something unknown, but essential."

A defining feature of this new body of work is Jader's integration of bold com-



Work by Michelle Jader

positions and backgrounds. She pushes the boundaries of traditional painting by creating depth on multiple layers of acrylic panels.

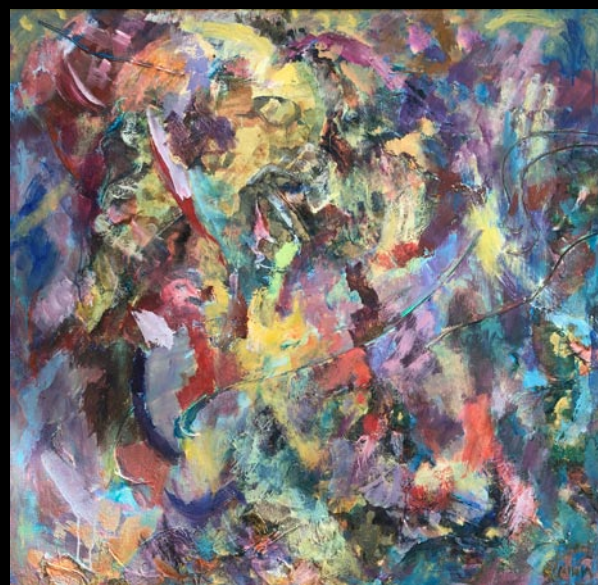
Gallery owner Robert Lange praises Jader's evolution, "Michelle's work has always moved—physically, emotionally, spiritually. But *Untethered* feels like it's vibrating on a whole new level. Her ability to capture motion and emotion with such elegance is absolutely riveting."

"There's a raw beauty in this show that hits you the moment you walk in," Lange adds. "It's powerful, it's personal, and yet it resonates so universally. This is Michelle at her most daring."

Highlights of the exhibition include the

continued on Page 8

Halsey - McCallum Studio William Halsey & Corrie McCallum



Painting by Corrie McCallum

Paintings
Graphics
& Sculpture for
the discerning
collector

Both artists are
recipients
of the
Elizabeth O'Neill
Verner Award



Duo by William Halsey, oil on paper, 11 x 15 inches

For information: David Halsey • 843.813.7542 • dhalsey@mac.com

WELLS GALLERY



RUSSELL GORDON, *REFLECTION*, 30x22, OIL

THE SANCTUARY AT KIAWAH ISLAND GOLF RESORT
1 SANCTUARY BEACH DR | KIAWAH, SC | 29455 | 843.576.1290
WWW.WELLSGALLERY.COM