

SC Institutional Galleries

continued from Page 34



Work by Donnie Copeland

year, these talented students have dedicated significant effort to creating exceptional art. The Greenville County School District and GCCA are delighted to celebrate and share the artistic accomplishments of the student artists with the public. **The Shop at GCCA** - In celebration of our eighth anniversary, Greenville Center for Creative Arts is thrilled to announce the opening of our official gift shop! As another opportunity for GCCA to support local artists, visitors can shop for consigned artworks from Greenville-based artists including prints, small originals, jewelry, pottery, and more! The Shop at GCCA will also have novelty merchandise for sale so you can show your love for Greenville arts everywhere you go! **Ongoing** - Home to 16 studio artists. Hours: Wed.-Fri., 1-5pm. Contact: call 864/735-3948 or at (www.artcentergreenville.org).

Greenville County Museum of Art, 420 College Street, Greenville. **Through July 28** - "This Is Not: Aldwyth in Retrospect". A Gallery Tour with guest curator Mark Sloan will be offered on May 19, at 2pm. Organized by guest curator Mark Sloan, this retrospective spans nearly seventy years of Aldwyth's work, beginning with photography and continuing through experimental painting, assemblage, and collage. The exhibition considers a number of personal themes that have remained consistent throughout her career. Now in her late 80s, the artist, who uses the singular name Aldwyth, has lived and worked alone in an octagonal house overlooking a salt marsh on one of South Carolina's sea islands since 1980. While maintaining her seclusion from the larger art world, she has employed the history of art and ideas as a catalyst for complex found-object sculptures and increasingly epic-scaled collages that often recall medieval manuscripts writ large. **Through Sept. 8** - "Horace Day in the Lowcountry." A plein air realist, Horace Day helped to extend the Charleston Renaissance into the post-World War II era by modernizing the genre, combining the punch of brilliant colors and textured brushstrokes with the same love of place expressed by Alfre Hutty, Alice Ravenel Huger Smith, Anna Heyward Taylor, and Elizabeth O'Neill Verner. His fresh interpretations of Carolina Lowcountry subjects documented vibrant city streets and their inhabitants, bucolic landscapes, rural cabins hidden beneath massive oaks, and churches still identifiable today by their distinctive architectural details. This exhibition will focus on the artist's work that was painted over four decades of traveling along the coast - from Charleston to Hilton Head Island. **Ongoing** - "Art and Artists of South Carolina: For Real". The GCMA's newest exhibition is drawn from the Museum's permanent collection. Celebrate the Palmetto State with a diverse selection of watercolors by Mary Whyte and Stephen Scott Young, sculptures carved by Grainger McKoy, and varied South Carolina landscapes. **Ongoing** - "Collection Highlights: African-American Art," features 17 works by as many artists. At the forefront of the exhibition is a realistic sculpture by John Wilson, whose monumental bronze head of Martin Luther King, Jr. captures the dignity and strength of the civil rights leader. Post-World War II non-objective painting is reflected in works by Beauford Delaney, Hale Woodruff, and Frank Wimberley. A lighter, but no less powerful, touch is embodied in a brilliant Color Field painting by Thomas Sills. The exhibition also includes evocative examples by Romare Bearden, Frederick Brown, Jacob Lawrence, Betye Saar, Merton Simpson, and Bob Thompson. **Ongoing** - "Andrew Wyeth: Running with the Land". This stunning retrospective showcases 59 works on paper, capturing Wyeth's preference for painting intimate subjects that were tied to the homes established by his father in both Chadds Ford,

Pennsylvania, and Cushing, Maine. Wyeth drew inspiration from the distinctive characteristics and denizens of these locations, revealing universal traits in his depictions of landscapes, objects, and people. **Ongoing** - "All in the Family (Connections)," which assembles work by three generations of Wyeths--the first family of American painting--taking advantage of several rarely exhibited loans from a private collection and complementing the exhibition "Andrew Wyeth: Running with the Land". Admission: Free. Hours: Wed.-Sat., 10am-6pm and Sun., 1-5pm. Contact: 864/271-7570 or at (www.gcma.org).

Lipscomb Gallery, at South Carolina Governor's School for the Arts and Humanities, 15 University St., Greenville. **Ongoing** - We feature several exhibitions throughout each year - our own students and faculty, plus many guest artists. Hours: Mon.-Fri., 10am-4:30pm. Visitors are asked to sign in at the Administration Building's front desk before entering campus. Contact: 864/282-3777 or 864/282-3705.

Metropolitan Arts Council Gallery, 16 Augusta Street, Greenville. **Through July 12** - "Flat Out Under Pressure," featuring artworks created in a 24 hour timeframe. **Ongoing** - Featuring works by Greenville area artists. Hours: Mon.-Fri., 9am-5pm. Contact: 864/467-3132, or at (www.greenvillearts.com).

Museum & Gallery, Bob Jones University, Wade Hampton Boulevard, Greenville. **Ongoing** - "Likely and Unlikely Pairings," featuring a fascinating juxtaposition of art and mundane objects revealing a variety of viewpoints. Through this special comparative display, the unique presentation serves as an engaging tool for all viewers interested in understanding the many facets of art, culture, and thought. **Ongoing** - Permanent exhibition of the finest collection of religious art in America, including works by Rubens, Botticelli, and Van Dyck. Offering visitors a 60-minute audio-guided tour of over 40 favored works for a modest fee. Hours: Tue.-Sun., 2-5pm. Contact: 864/242-5100, Ext. 1050 or at (www.bjmg.org).

Tiger Strikes Asteroid Greenville, Hampton Station Bay 6, Unit 601, Hampton Station, 1320 Hampton Avenue Extension, Greenville. **Through July 20** - "Intersectional Voices: Reflective Experiences of the American South," explores the evidence of lived experiences within each artist's work as they challenge the viewers understanding and examination of material, technique and imagery. The works of Katrina Andry, Kephira Davis and Clare Hu's work all hold space in the past, present and future that allows focus within the works edges, broadening viewers ideas and understanding of cultural complexities. Hours: Fri., 4-8pm; Sat., noon-6pm or by appt. Contact: e-mail to (greenville@tigerstrikesasteroid.com).



Work by Lika Rasch

ALTERNATE ART SPACES - Greenville **Centre Stage Theatre Gallery**, 501 River Street, Greenville. **Through Aug. 11** - "Wild One(s)", featuring works by Ilka Rasch. In her first solo show, Ilka Rasch seeks a semblance of order amidst chaos, using the meditative process of creating repetitive patterns. Through her work, Rasch invites viewers to contemplate the delicate interplay between structure and chaos, resilience and vulnerability, highlighting the profound adaptability of the human mind. **Ongoing** - Featuring works by visual art members of MAC. Exhibits are offered in collaboration with the Metropolitan Arts Council. Hours: Tue.-Thur., 2-5pm & 2 hr. prior to shows. Contact: MAC at 864/467-3132, at (www.greenvillearts.com/mac-featured-galleries/).

Greenwood

Arts Center of Greenwood, at the Federal Building, 120 Main Street, Greenwood. **Main Gallery, Through Aug. 2** - "SC Festival of Flowers' Juried Art Show," is a sanctioned exhibition hosted annually by The Arts Center of Greenwood in concurrence with the award-winning festival. There is a total of \$3,000 in awards. The exhibition represents exemplary contemporary art throughout the state and southeast. **Ongoing** - Featuring works by local and regional artists. Hours: Mon.-Fri., 10am-5pm & Sat., 10am-3pm. Contact: 864/388-7800

or at (www.emeraldtriangle.us/arts-center).

Lander University Fine Art Gallery, Cultural Center Building, 320 Stanley Ave., Greenwood. **Ongoing** - The Lander University Fine Art Gallery features a variety of exhibits throughout the year. The gallery features national and regional artist, as well as student and faculty work showcasing painting, sculpture, ceramics, graphic design, and photography. Hours: call about Summer hours. Contact: call Jon Holloway at 864/388-8810 or at (<https://www.facebook.com/pages/category/Art-Gallery/Lander-University-Fine-Art-Gallery-166498067092236/>).

Greer

Edward R. Driggers City of Greer Center for the Arts, 804 Trade St., Greer. **Ongoing** - Featuring artists studios. Hours: Tue., noon-8pm; Fri., 9am-3pm; & Sat., 10am-2pm. Contact: call Sara Odem at 864/5383 or at (<http://greerculturalarts.com/>).

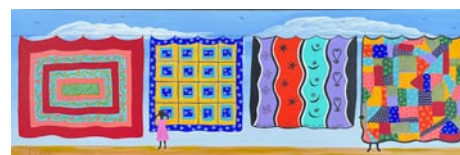
Hartsville

Black Creek Arts Center, 116 West College Ave., Hartsville. **Jean & James Fort Gallery, Through July 26** - "Quilts of Valor" and "Carolinas" In "Quilts of Valor," marvel at the intricate artistry of hand-crafted quilts that blend traditional techniques with contemporary designs. Each piece tells a unique story, capturing the essence of both past and present. In the exhibit "Carolinas," explore a stunning collection of photographs from amateur and professional photographers of all ages who live, work, or create in the Pee Dee Region. "Carolinas" will be displayed at Black Creek Arts Center and Hartsville Memorial Library. **Ongoing** - Featuring works by local and regional artists. Hours: Tue.-Thur., 10am-1pm and 2-5pm; Fri., 10am-2pm and 1st Sat. of the month 10am-1pm. Contact: 843/332-6234 or at (www.blackcreekarts.org).

Hartsville Museum and Sculpture Courtyard, 222 North Fifth Street, corner of Fifth Street and Home Avenue, Hartsville. **W. Reaves McCall Gallery, T - . Ongoing** - Housed in a 1930's Post Office Building, the museum has kept many of the unique architectural features of the building. The skylight, original to the building, has been retrofitted with stained glass panels depicting the flora and fauna significant to the area. The Sculpture Courtyard added in 2000 features many different types of sculpture. The Showcase Gallery presents special exhibits focusing on history, the arts or present day events. Hours: Mon.-Fri., 10am-5pm (closed from noon-1pm on Fri.). Contact: 843/383-3005 or at (www.hartsvilmuseum.org).

The Patz Fowle Visual Arts Studio, SC Governor's School for Science + Mathematics, 401 Railroad Avenue, Hartsville. **Ongoing** - A public, boarding high school for students in grades 11 and 12. The school concentrates on science and mathematics, but offers the full spectrum of the humanities as well. For info visit (www.scgssm.org)

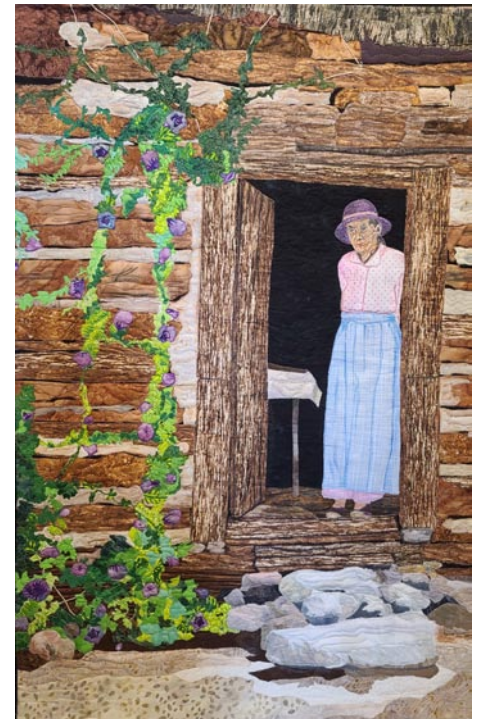
Hilton Head Island Area



Work by Samantha Claar

Art League of Hilton Head Gallery, at the Arts Center of Coastal Carolina, 14 Shelter Cove Lane, Hilton Head Island. **Through July 19** - "Land-Escapes: Through My Lens," featuring works by the Art League's gallery manager, Lyndsi Caulder. Caulder, has her chance to shine when she showcases her landscape photography in "Land-Escapes: Through My Lens". The photographs depict scenes ranging from Lowcountry beaches and marshes to Arizona mesas and the Colorado mountains. She wants you to walk away from each photo with the feeling she had when taking the photo. "I just want people to love the Landscape!" She is very excited to display at Art League of Hilton Head exclusively, and has waited for this moment of a gallery exhibit for 25 years! **July 23 - Aug. 23** - "Painting the Stories: Glimpses of Gullah," featuring works by local favorite Samantha Claar. A reception will be held on July 24, from 5-7pm. Claar will also host a Gallery Walk on July 25, at 11am, where she will discuss her work, influences, and processes. The exhibit, reception and gallery walk are free and open to the public. Samantha Claar's work portraying the Gullah-Geechee lifestyle. The boldly colored paintings, often painted on recycled or salvaged materials, are inspired by Claar's dreams or "nighttime roamings." **Ongoing** - Featuring works by members of the Art League of Hilton Head. Hours: Mon.-Sat., 10am-4pm. Contact: 843/681-5060 or at (www.artleaguehhi.org).

Art League of Hilton Head Academy, 106 Cordillo Parkway on Hilton Head. **July 23 - 30** - "Halfway Home," a sea turtle art exhibit to support Sea Turtle Patrol HHI. A reception will be held on July 30, from 5-7pm. Art League will donate 20% of artwork sales to Sea Turtle Patrol HHI. Hours: Mon.-Fri., 10am-4pm. Contact: call 843/842-5738.



Work by Peg Weschke

Coastal Discovery Museum, at Honey Horn, off Highway 278, across from Gumtree Road, Hilton Head Island. **Main Gallery, Through July 7** - "Field Trip," showcasing images of natural and historic sites throughout the region by members of the Camera Club of Hilton Head Island. A highlight of the exhibit will be photographs by student winners of the Kurtzberg Memorial Awards. Named after Dr. Larry Kurtzberg, a champion of youth photography and the club's founder and first president, these awards recognize exceptional students enrolled in Hilton Head Island High School's visual arts photography courses. **July 16 - Oct. 6** - "Imagine," featuring an exhibit of works by the Art Quilters of the Lowcountry, including: Ron Hodge, Peg Weschke, Jody Wigton, Donna Stankiewicz, and Ro Morrissey. A reception will be held on July 18, from 5-7pm. Demos will be offered during the run of the exhibit. "Imagine" is an immersive art exhibit that explores the power of imagination. The award-winning fiber artists and art quilters fuse fabric and thread to delve into the transformative and introspective nature of imagining one's own world. By fostering a space for creativity and self-reflection, "Imagine" aims to inspire attendees to reimagine the world around them. **Ongoing** - Featuring a butterfly sculpture by South Carolina artist Eric Moore; work by sculptor John Van Alstine; and murals by Italian artist Hitnes. Admission: FREE. Hours: Mon.-Sat., 9am-4:30pm & Sun., 11am-3pm. Contact: 843/689-6767 or at (www.coastaldiscovery.org).

Lake City

Crossroads Gallery, 124 West Main Street, Lake City. **Ongoing** - Featuring past winning entries from ArtFields competitions on a rotating basis. Hours: Tue.-Sat., 11am-5pm. Contact: (www.artfieldssc.org).

Jones-Carter Gallery, 105 Henry Street, next to The Bean Market, Lake City. **Through Aug. 24** - "Bridges to Personhood," featuring works by Harry Hansen & Olga Yukhno. Hours: Tue.-Sat., 11am-5pm. Contact: call 843-374-1505 or at (<https://www.facebook.com/JonesCarterGallery/>).



Work by Tarlton Blackwell

TRAX Visual Art Center, 122 Sauls Street, Lake City. **Through Aug. 24** - "Tarlton Blackwell - Greatest Show". Hours: Tue.-Sat., 11am-5pm. Contact: 803/435-3860 or at (<https://www.traxvisualartcenter.com/>).

Lancaster

USC Lancaster Native American Studies Center, 119 South Main Street, Lancaster. **Five Points Gallery, Through Aug. 30** - "More than a Game: Indigenous Sports and Athleticism". This exhibit is on display in conjunction with the 18th Annual Native American Studies Week, "Indigenous Athletes and Athleticism:

continued on Page 36