

NC Commercial Galleries

continued from Page 64

creations; lampwork glass jewelry & handblown glass; fine handmade silver jewelry; stained glass; and handwoven baskets. Hours: Tue.-Thur., 11am-5pm & Fri.-Sat., 11am-7pm. Contact: 252/617-0209 or at (<http://www.stardustartgallery/>).

The Art Gallery @ Le Bistro & Fine Dining, 3402-B Trent Road, New Bern. **Ongoing** - Featuring works by local artists who explore a wide range of media including Gayle George, Nell Maha, John Dreas, Nada Behr, Doris Walker, Barbara Cornish, B. Chris Munyan, Douglas Rowe, Tess Luper, James King, William K. Henson, John Mitchell, Joan Russell, Betty Brown, Blain Kruger and Dan Wilson. Come in for lunch or dinner, have a glass of wine and peruse the work of these fine artists. Hours: Tue.-Wed., 10am-5pm; Thur.-Sat., 10am-8pm; and Sun., 9am-2pm. Contact: 252/637-7331 or at (<http://www.lebistrofinediningandtheartgallery.com>).

The Dirty Bird, 244½ Middle Street, New Bern. **Ongoing** - Featuring an eclectic mix of paintings, ceramic items, jewelry and repaired and painted furniture. Hours: Tue.-Thur., 11am-6pm & Fri.-Sat., 10am-5pm. Contact: 252/626-1983.

The Sanctuary Gallery, 2601-A Trent Rd., New Bern. **Ongoing** - The Sanctuary Gallery is New Bern's newest art gallery and is artist owned and operated representing regional and national artists. The fine art and fine craft gallery has a diverse collection of paintings, drawings, sculpture and hand-craft2ed jewelry. Representing both regional and national artists. The fine art and fine craft gallery has a diverse collection of paintings, drawings, sculpture and hand crafted metal jewelry to complement any taste. Hours: Tue.-Thur., 10am-5pm & Fri.-Sat., 10am-6pm. Contact: 252/571-8562 or at (www.theSanctuary-Gallery.com).

Newton

New Gallery
NoCo Arts, 118 North College Avenue, Newton. **Ongoing** - NoCo Arts will offer 2,000 square feet of gallery and retail space. Curated exhibits will rotate every six to eight weeks. NoCo Arts will offer 2,000 square feet of gallery and retail space. Curated exhibits will rotate every six to eight weeks. Summer Hours: Wed., 10am-6pm; Thur.-Fri., 10am-8pm; Sat., 10am-6pm; & Sun., 11am-3pm. Contact: (www.nocoartsn.com).

North Wilkesboro

Taupe Gallery, 305 10th Street, North Wilkesboro. **Ongoing** - Nestled in the foothills of the Blue Ridge Mountains, in the small town of North Wilkesboro, lies the secret treasure of Taupe Gallery. With one-of-a-kind handcrafted and hand-picked works from artists from all over, Taupe offers a unique selection sure to appeal to anyone who steps in the building. Owners Jim Lyall and Steve Key are here to welcome you, and are happy to answer any questions or curiosities about art pieces and the artists behind them. Visitors are encouraged to engage, interact with, and experience the artwork in the friendly and colorful environment of Taupe Gallery. Hours: Mon.-Wed. by chance; Thur. & Fri., 10am-5pm; and Sat., 10am-1pm. Contact: 336/990-0148 or at (www.taupegallery.com).

Ocracoke Island

Village Craftsmen, 170 Howard Street, Ocracoke Island. **Ongoing** - We feature pottery, glass, jewelry, kitchen items, musical instruments, wrought iron, baskets, bells, boxes, soaps, accessories, clothes, games, kaleidoscopes, lawn sprinklers, lamps & lampshades, prints, tin ware, pewter items, tiles and much more - all made by American artists. Hours: Mon.-Sat., 10am-4pm & Sun., 10am-2pm. Contact: 252-928-5541 or at (www.villagecraftsmen.com).

Old Fort

Turtle Island Pottery, 2782 Bat Cave Road, Old Fort. **Ongoing** - Featuring handmade pottery by Maggie and Freeman Jones, who create one of a kind, functional, decorative stoneware items. From cups to umbrella stands, mirror frames and clocks. Sculptural and inspired by nature, many forms are reminiscent of antique pottery from the arts and crafts movement and art nouveau styles. Hours: Showroom open most Saturdays, call ahead for any day of the week. Contact: 828/669-2713 or at (www.Turtleislandpottery.com).

Oriental

Village Gallery, 300 Hodges Street, Oriental. **Ongoing** - The Village Gallery features the works of more than 40 member and consigned artists. The Gallery is staffed by its resident artists. As a cooperative gallery we offer great values. You buy directly from the juried artists. Hours: Wed.-Sun., 10am-5pm. Contact: 252/249-0300 or at (www.villagegallerync.com).

Outer Banks Area

Pea Island Art Gallery, 27766 NC Hwy. 12, Salvo. **Ongoing** - Featuring handmade works by over 100 Outer Banks artists. Hours: call ahead. Contact: 252/987-2879 or at (www.peaislandartgallery.com).

Swell Art Gallery, 46854 NC 12, Hatteras Island, Buxton. **Ongoing** - Featuring fine art and craft works by local and NC artists. WE also do custom framing. Hours: Tue.-Fri., 11am-5pm & Sat., 11am-4pm. Contact: at ([swellartgallery.com](http://www.swellartgallery.com)).

Pinehurst - Southern Pines Area

Hollyhocks Art Gallery, 905 Linden Rd., one mile from Pinehurst next to Elliott's restaurant, Pinehurst. **Ongoing** - Featuring original work by award winning local artists Jane Casnel-lie, Diane Kraudelt, Irene McFarland, Paula Montgomery, and Robert Gera. Offering a wide range of work from contemporary to traditional, the gallery includes portraiture, vibrant Tuscan scenes, palpable pet portraits, beautiful florals and more, in a wide variety of mediums including oils, acrylics, pastels and unusual black and white washes. Hours: Mon.-Sat., 10am-9:30pm. Contact: 910/255-0665 or at (www.Hollyhock-sArtGallery.com).

Pittsboro

All In One Pottery, 115 Hobbs Road, Pittsboro. **Ongoing** - The pottery houses an eclectic mix of hand-painted mailolica dinnerware, pitfired & raku vases, and hand-crafted musical instruments by Allen McCaless; as well as pitfired sculptural ceramic artwork by Louise Hobbs McCaless. Hours: by appointment only. Contact: 919/542-6162

Liquidambar Gallery & Gifts, 80 Hillsboro Street, Pittsboro. **Ongoing** - Featuring the works of gallery owners Kitty and John Mecham. The gallery has also been a showcase for over 85 artists, featuring a wide variety of both 2-D and 3-D arts and crafts during the past 10 years. Hours: Wed.-Sat., 10:30am-5:30pm. Contact: 919/542-1773, e-mail at (liquidambargallery@gmail.com) or at (<http://www.liquidambarstudio.com/>).



Work from Mark Hewitt Pottery

Mark Hewitt Pottery, 424 Johnny Burke Road, Pittsboro. **Ongoing** - For thirty-seven years, Mark Hewitt has been making beautiful, functional and decorative pots, using locally sourced materials, and firing them in a large wood-burning kiln here in Pittsboro, NC. You can find a lovely selection of his finely crafted pottery in our barn/showroom.. Hours: by appt. only. Contact: 919) 542-2371 or at (<https://hewittpottery.com/>).

Pittsboro Gallery of Arts, 44-A Hillsboro Street, a few steps north of the County Courthouse circle, in Pittsboro. **Ongoing** - When you visit Pittsboro Gallery of Arts you'll find it's a destination gallery situated in a historic, bustling small town at 44-A Hillsboro Street. This spacious and newly redesigned gallery is owned and operated by local and regional artists, whose purpose is to exhibit and offer an opportunity for art lovers and patrons to see, purchase and collect fine art and fine crafts.

Additionally, members wish to raise awareness and promote artistic excellence that contributes to the cultural and economic welfare of the community. Hours: Tue.-Sat., 10:30-5:30; 1st Sun., 10:30am-5:30pm; and 3rd Fri. 5:30-8-pm. Contact: 919/704-8552 or at (<https://www.pittsboroarts.org>).

Raleigh Area



Work by Steve Moore

ArtSource Fine Art & Framing, 4421-123 Six Forks Road (behind Bonefish Grill, across from Brother's Cleaners at North Hills...look for the red door), Raleigh. **Ongoing** - ArtSource is a fine art gallery housing over 1,600 works of art by 65+ artists. This award-winning gallery has assisted collectors and businesses in the selection of fine art, custom art pieces and framing for over 20 years. Hours: Tue.-Sat., 10am-6pm or by appt. Contact: 919/787-9533, or at (www.artsources-raleigh.com).

Ashley's Art Gallery, 701 N. Main St, located 12 miles south of Raleigh, Fuquay-Varina. **Ongoing** - Featuring fine art originals by national and local artist including Terry Isaac, Braldt Bralds and John Weiss and reproductions by Pino, Robert Bateman, Carl Brenders, Bev Doolittle and William Mangum. Hours: Mon.-Thur., 11am-6pm & Fri.-Sat. 10:30am-5pm. Contact: 919/552-7533 ext.3 or at (www.ashleyart.com).

Charlotte Russell Contemporary Fine Art Gallery, 2012 A Fairview Road, Five Points area, Raleigh. **Ongoing** - Charlotte Russell Contemporary Fine Art Gallery offers original artworks by emerging and mid-career artists in our newly opened art gallery. Hours: Wed.-Sat., 11am-4pm or by appt. Contact: 415/601-0023 or at (www.charlotterussellcontemporary.com).

City Market Art Collective, 300 Blake Street, Raleigh. **Ongoing** - CMAC was created and founded by sculptor Paris Alexander in 2020. He invited a select group of resident artist to fill this large open gallery space with a variety of works, including paintings, sculpture and mixed media works. There are eight distinct galley spaces including a dedicated sculpture gallery. There is also a monthly invited guest artist exhibition. Hours: Wed.-Sat., 11am-6pm. Contact: 919/219-0350 or e-mail to (citymarketartistcollective@gmail.com).

Flanders Gallery, 505 S. Blount Street, Raleigh. **Ongoing** - Flanders Gallery is committed to cultivating the careers of emerging artists. Through its rigorous exhibition program, the gallery continues to explore new concepts in contemporary art using various media. Flanders Gallery is dedicated to exhibiting provocative and innovative contemporary art, producing 14-18 exhibits each year both in the gallery and in alternative exhibit spaces. Hours: Wed.-Sat., 11am-6pm. Contact: 919/757-9533 or at (<http://flandersartgallery.com>).

Gallery C, 540 North Blount Street, Raleigh. **Through July 31** - "Haiti as it Was". Art from the Magical Island. The art from Haiti is a fusion of African traditions, Roman Catholic symbols, and Vodou rituals. It is collected and recognized around the world for its lavish outpouring of colorful, intricate, and symbol-laden works of enchanting imagery. In the second half of the twentieth century and continuing to the present, a small legion of Haitian artists have combined the rich images of Roman Catholic saints with the mythical figures of sacred African mysteries. **Ongoing** - Gallery C brings talented artists and fine art to the attention of serious private collectors and museums. Since 1985, Gallery C has established itself as one of the Southeast's leading fine art galleries in Raleigh, NC. Open by appt. only. Hours: Tue.-Sat., 11am-4:30pm Contact: 919/828-3165 or at (www.galleryc.net).

Glenwood Fine Art, 20 Glenwood Avenue, in the heart of Glenwood South, Raleigh. **Ongoing** - Featuring works by Beth Barger, Diana Coidan, Cecilia Guitarte, Emilio Garofalo, Linda Hauser, Eileen Hendren, Nicole Kennedy, Ed King, Patricia Pitman, Debbie Sherrod, Kathy Thompson, Lyudmila Tomova. Hours: by appt. or when the open flag is out when two of the 12 artists are in the studio. Contact: 919/395-6877 or at (www.glenwoodfineart.com).

Glenwood Gallery Art & Antiques, 610 W. Johnson St., Raleigh. **Ongoing** - Featuring works by Edwin D. Alexander, Barbara Evans, Michael Manas, Nancee Clark, Michael Van Horn, Rob Cox, Jim Green, Stan Strikland, Mark Tomczyk. Hours: Call. Contact: 919/829-7202.

Grace Li Wang Gallery and Studio, 14 Glenwood Ave. Ste. #27, Raleigh. **Ongoing** - Featuring works by Grace Li Wang. Hours: by appt. Contact: 919-412-6803 or e-mail to (graceliwang@gmail.com).

Litmus Gallery & Studios, 312 W. Cabarrus Street, (across the tracks from Amtrak Train Station) Raleigh. **Ongoing** - Regional emerging and/or established artists are featured every month with a reception from 6-9pm the first Friday of each month. Studios of resident artists are open for touring, viewing, and selling of art (paintings, sketches, sculptures, pottery, mixed media, photography, etc.). Hours: Thur., 10am-2pm or by appt. Contact: 919/571-3605 or at (www.litmusgallery.com).

Local Color Gallery, Carter Building, 22 South Glenwood Ave., Raleigh. **Ongoing** - The gallery has now grown into a women's artist cooperative 13 members strong. Hours: Thur., Fri., & Sat., 11am-3pm. Contact: 919/754-3887 or at (www.localcoloraleigh.com).

The Centerpiece Gallery, 7400 Six Forks Road, Suite 18, Raleigh. **Ongoing** - Representing over 30 fine artists & artisans, regional to nationally recognized. The number #1 gallery in the Triangle for art workshops. Great framing deals for artists and clients alike. Hours: Tue.-Fri., 11am-6:30pm; Sat., 11am-6pm or by appt. Contact: 919/948-4886 or at (<https://www.thecenterpiece.com>).

311 Gallery and Studios, 311 Martin Street, Warehouse District, Raleigh. **Ongoing** - Featuring three exhibit galleries, studios by tenant artists, The Print Studio, and the meeting place for The North Carolina Printmakers. Hours: Thur. & Fri. noon-4pm; Sat., noon-6pm. Contact: 919/675-1602 or at (<http://311gallery.com/>).

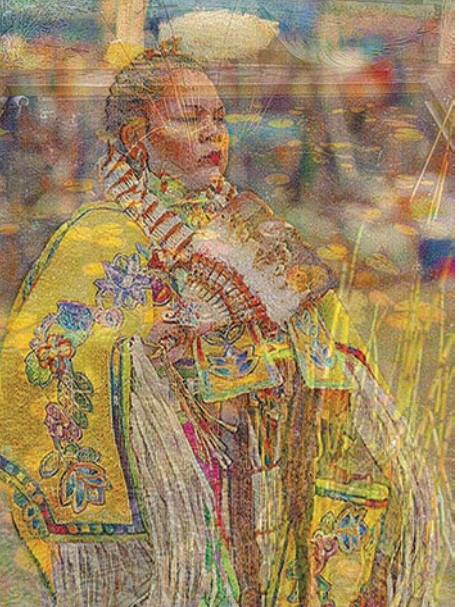
Triangle Cultural Art Gallery, 8320 Litchford Road, Suite 138 Raleigh. **Ongoing** - The Triangle Cultural Art Gallery cultivates and exhibits art that reflects the triangle's diverse cultural heritage and artistic expression. Through the engagement of cultural art awareness and events, we help build our local community. Hours: Tue.-Fri., 10am-6pm & Sat., 9am-5pm. Contact: call 919/900-8055 or at (www.triangleculturalart.com).

Randleman

Joseph Sand Pottery, 2555 George York Road, Randleman. **Ongoing** - Featuring wood-fired, salt and ash glazed pottery by Joseph Sand at kiln openings held three times each year. Hours: by appt. only. Contact: 612/518-4051 or 336/460-0259 and at (<http://www.jsspottery.com/>).

New Salem Pottery, 789 New Salem Road, Randleman. **Ongoing** - Established in 1972, New Salem Pottery is owned and operated by Hal Pugh and Eleanor Minnock-Pugh. Hal and Eleanor produce a variety of original redware and stoneware pottery. Years of work at the wheel and the subtle evolutionary convergence of originality with past traditions make their pottery recognizable by its own style. The slip decorated redware pitcher shown above is illustrative of their art. Hours: Wed.-Sat., 10am-5pm. Contact: 336/498-2178 or at (www.newsalempottery.com).

Red Springs



Work by Richard Mathis

Red Springs Artspace, 200 South Main Street, Red Springs. **Through July 20** - "The Land Remembers: Layers of Heritage," featuring

continued on Page 66